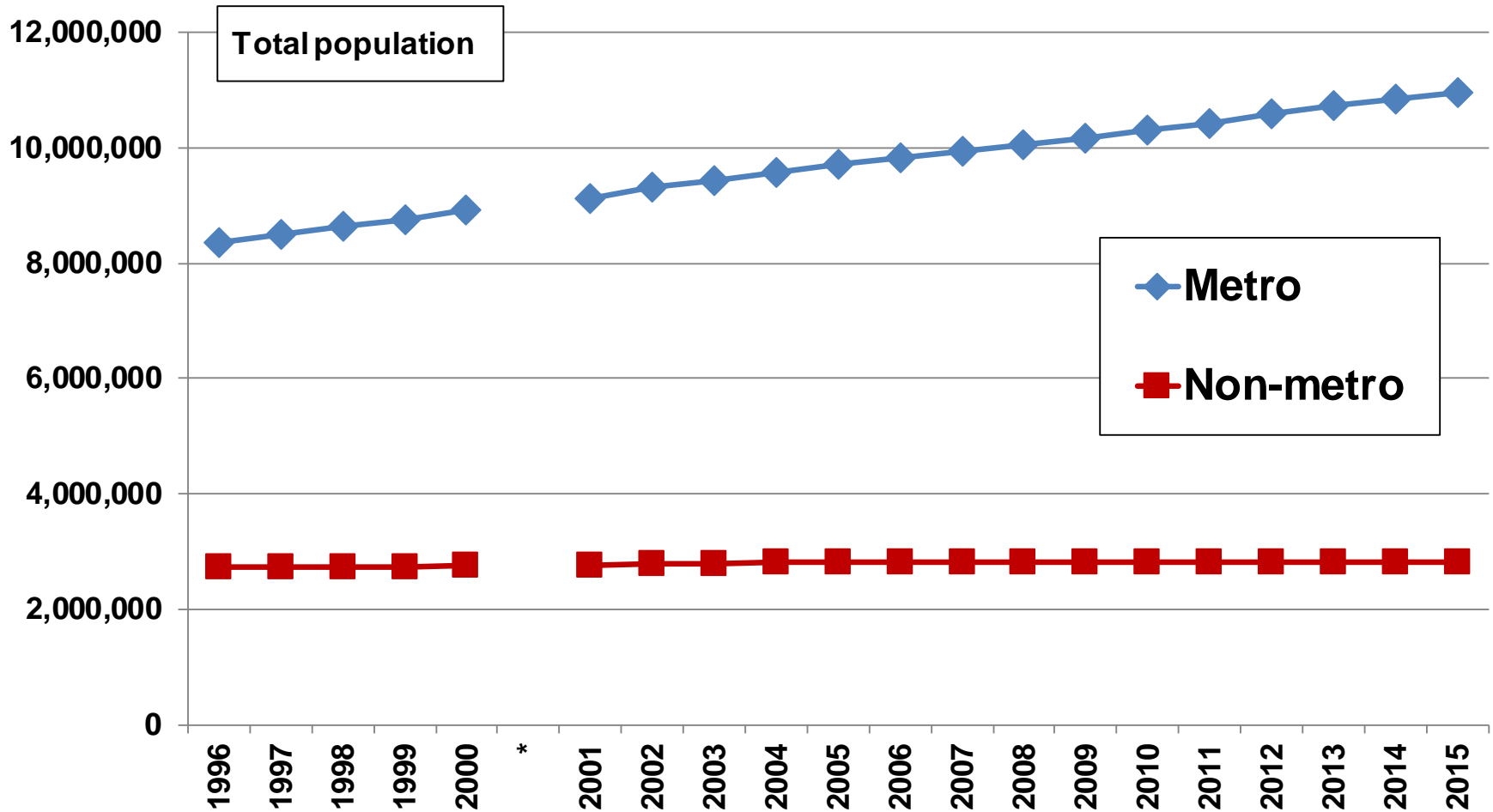


Charts: Non-metro population by age in Ontario

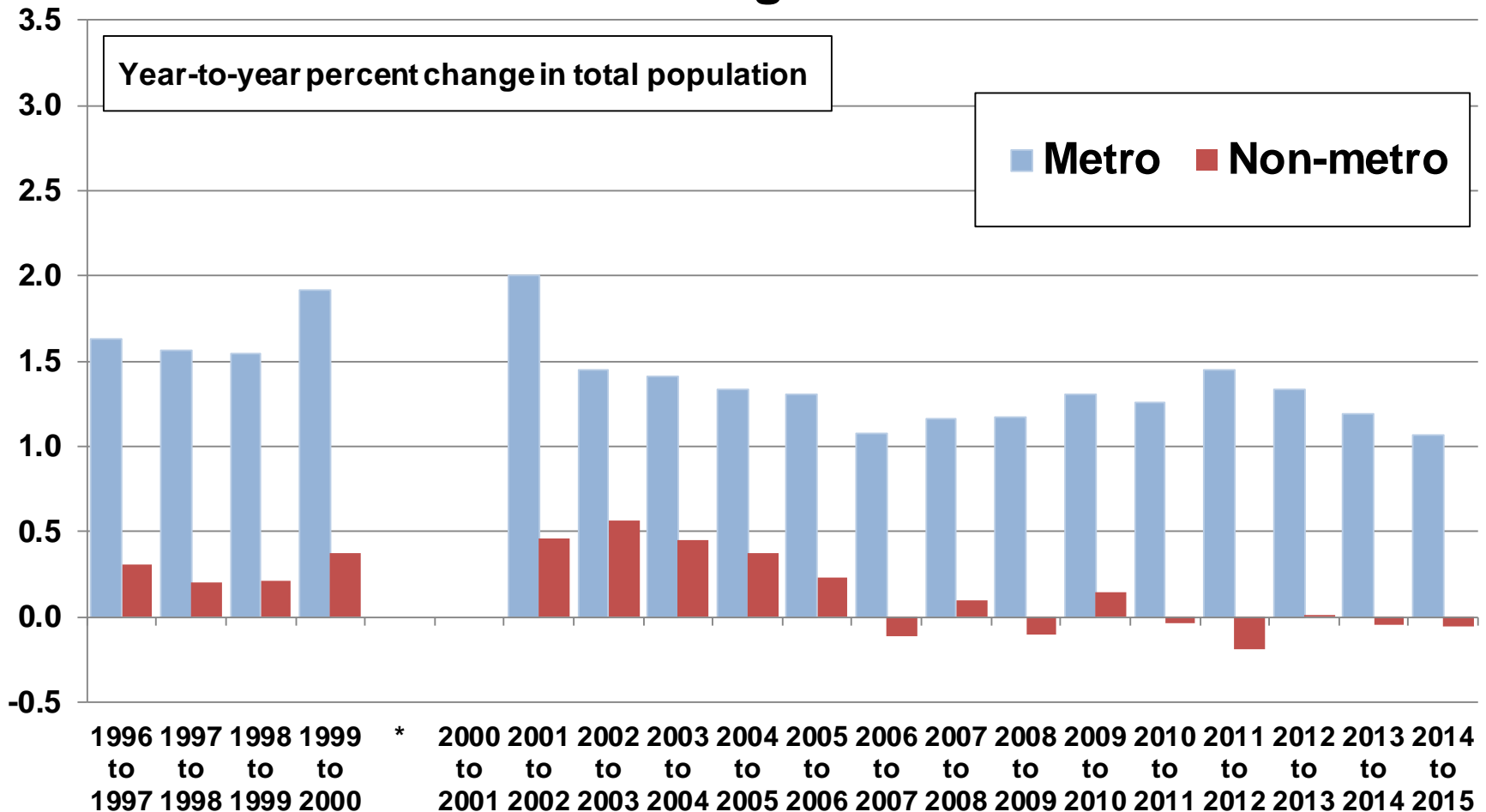
Ontario's non-metro population was 2.77 million in 2001, increased to 2.83 million by 2006 and was 2.82 million in 2015



* Data for 1996 to 2000 are classified according to the 2006 grid for CMA boundaries and data since 2001 are classified according to the 2011 grid for CMA boundaries.

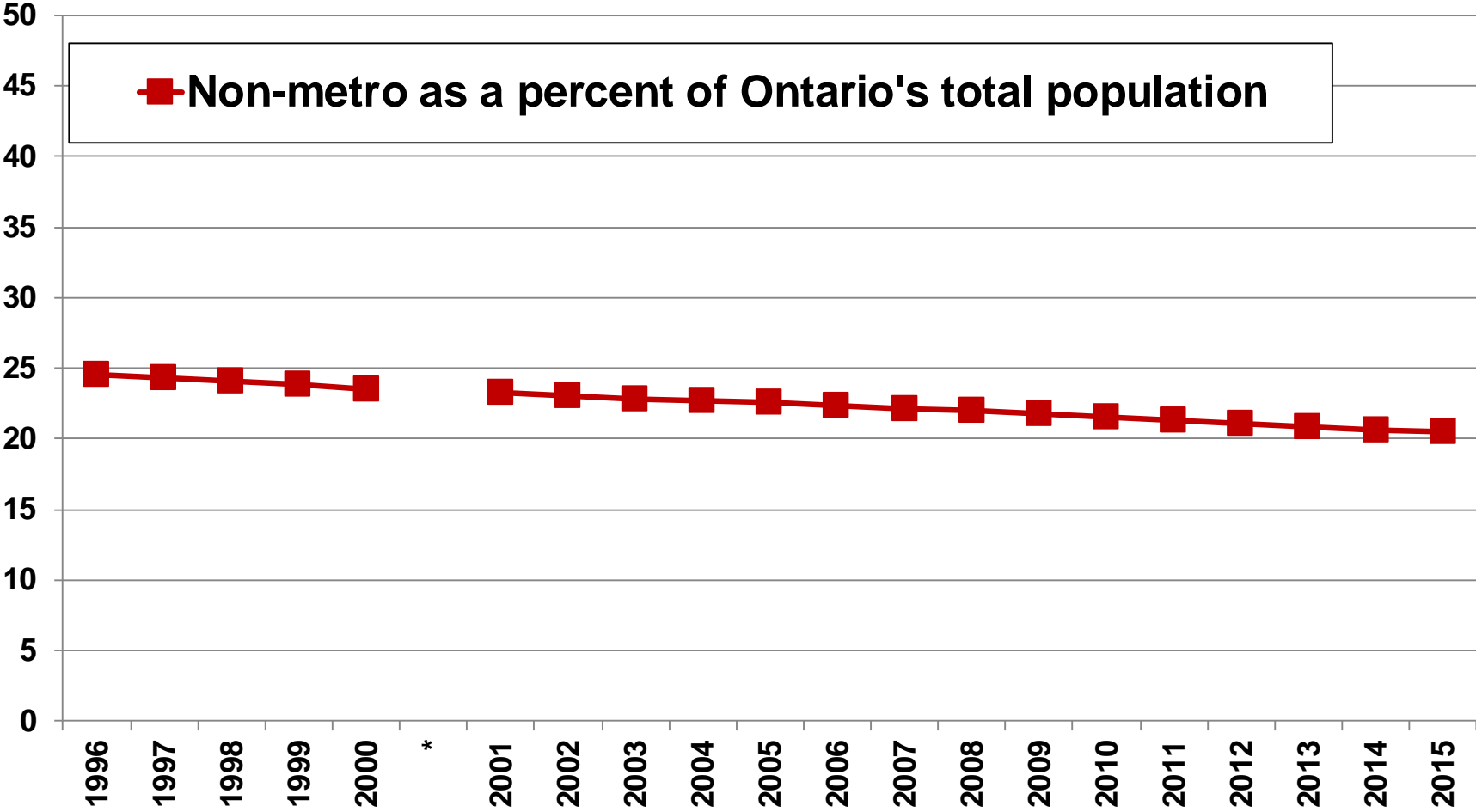
Source: Statistics Canada. **Annual Demographic Statistics**. CANSIM Table 051-0001 and 051-0056.

Ontario's non-metro population has shown no growth since 2006



* Data for 1996 to 2000 are classified according to the 2006 grid for CMA boundaries and data since 2001 are classified according to the 2011 grid for CMA boundaries.
 Source: Statistics Canada. **Annual Demographic Statistics**. CANSIM Table 051-0001 and 051-0056.

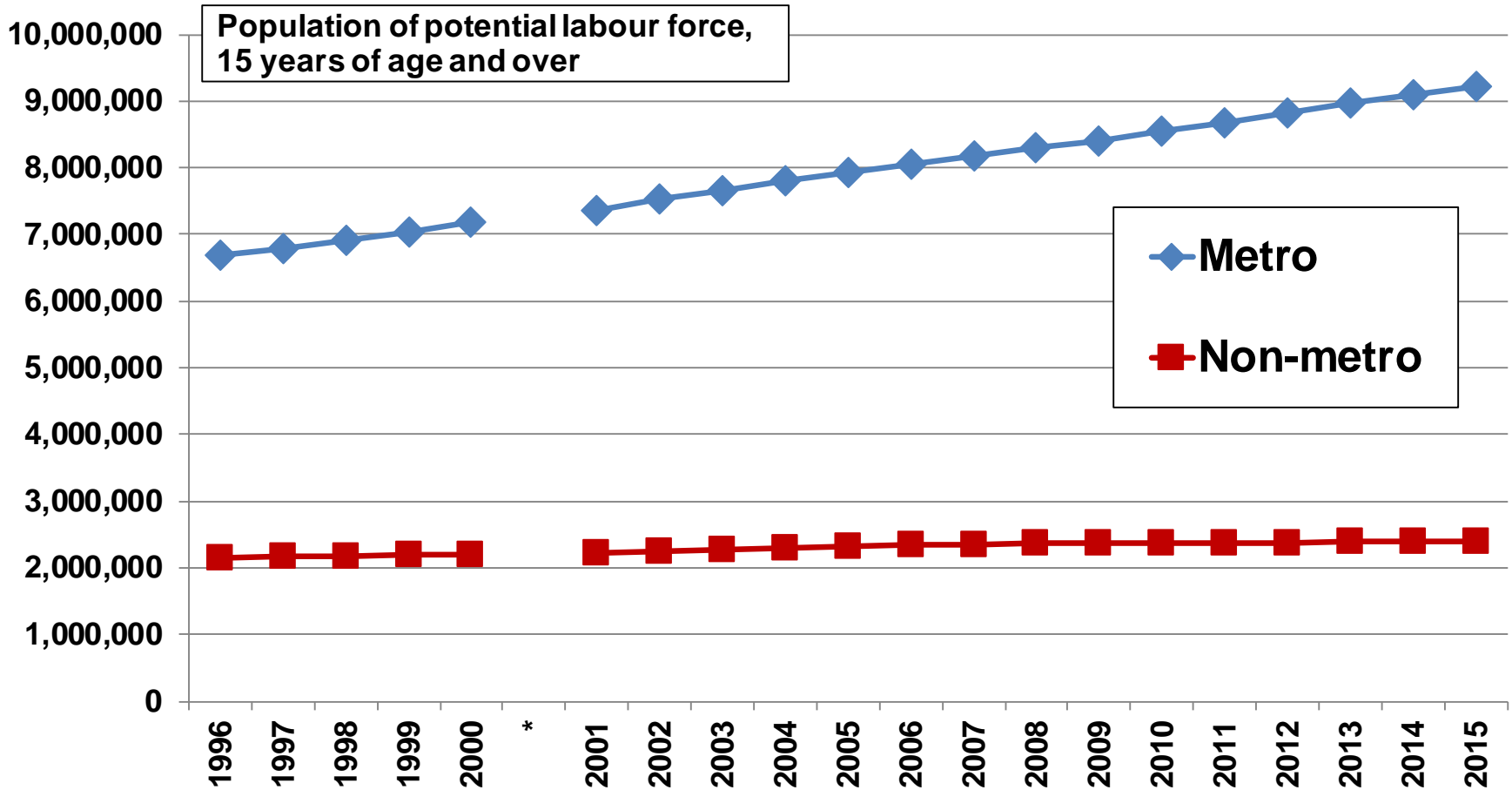
Non-metro areas represented 20% of Ontario's population in 2015



* Data for 1996 to 2000 are classified according to the 2006 grid for CMA boundaries and data since 2001 are classified according to the 2011 grid for CMA boundaries.

Source: Statistics Canada. **Annual Demographic Statistics**. CANSIM Tables 051-0001 and 051-0056.

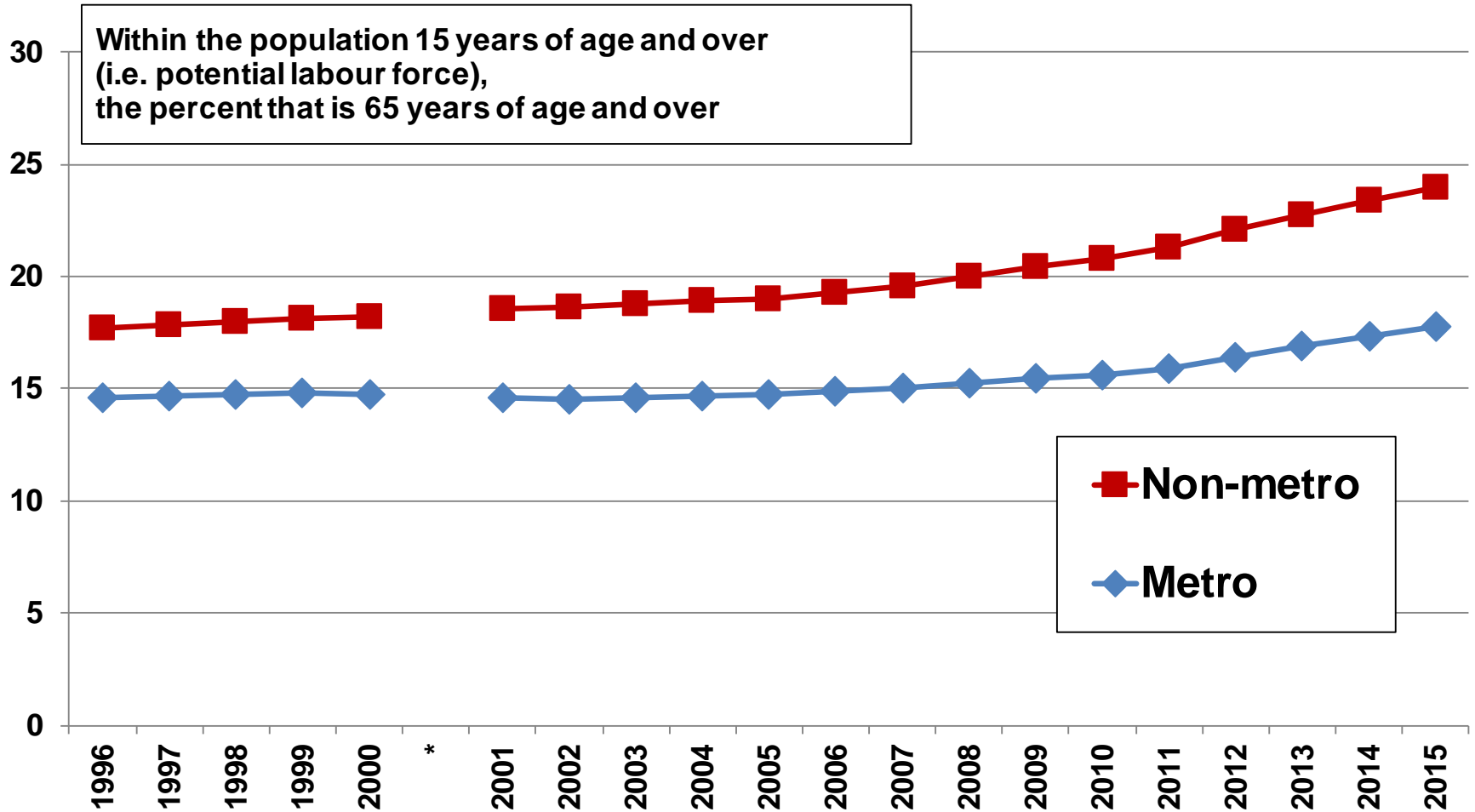
Ontario's non-metro potential labour force (15+ yr.) grew from 2.23 million in 2001 to 2.39 million in 2013 and remained at this level for 2014 and 2015



* Data for 1996 to 2000 are classified according to the 2006 grid for CMA boundaries and data since 2001 are classified according to the 2011 grid for CMA boundaries.

Source: Statistics Canada. **Annual Demographic Statistics**. CANSIM Table 051-0001 and 051-0056.

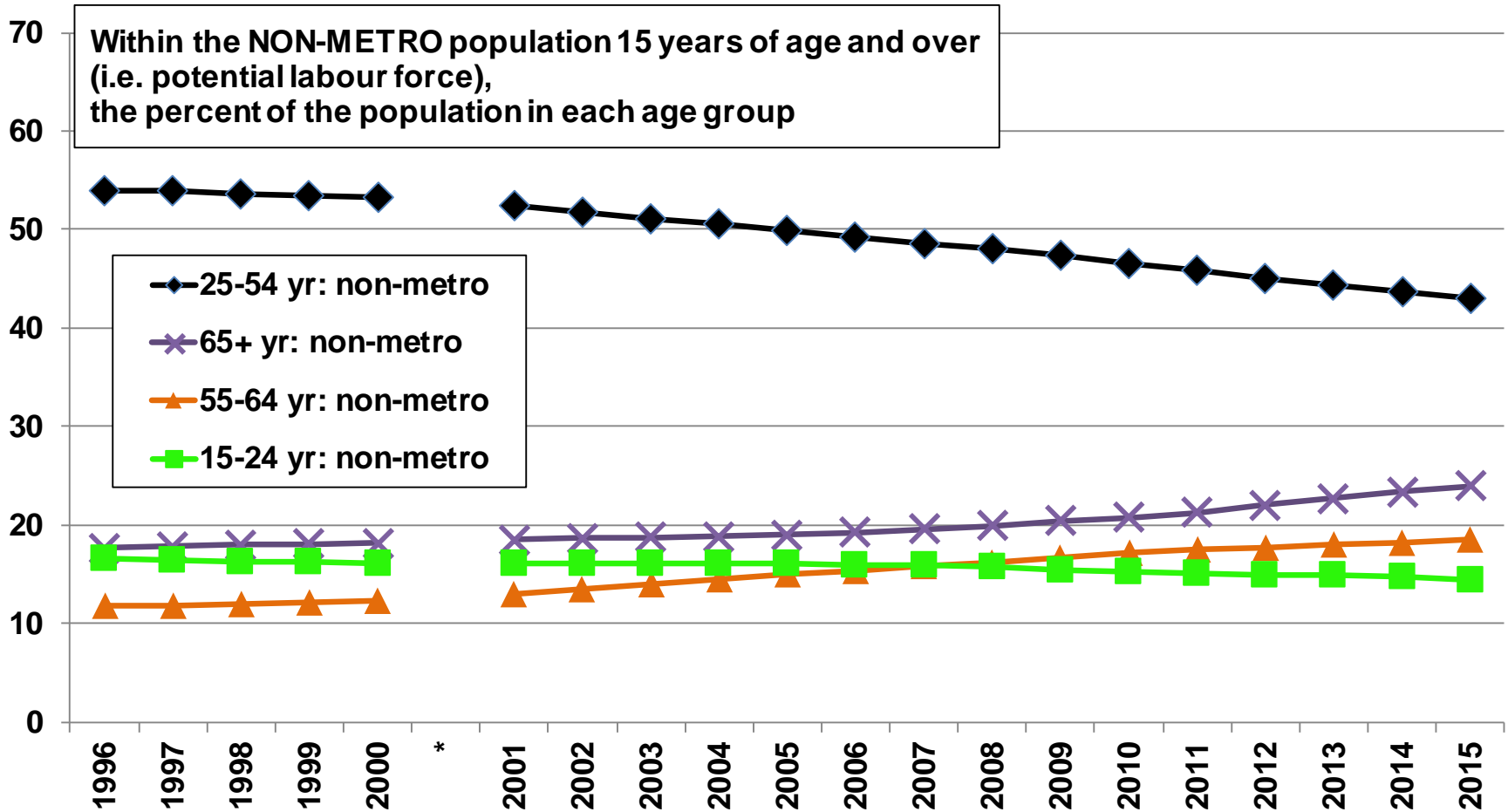
In non-metro Ontario in 2015, 24% of the potential labour force (15 years of age and over) was 65 years of age or older



* Data for 1996 to 2000 are classified according to the 2006 grid for CMA boundaries and data since 2001 are classified according to the 2011 grid for CMA boundaries.

Source: Statistics Canada. **Annual Demographic Statistics**. CANSIM Table 051-0001 and 051-0056.

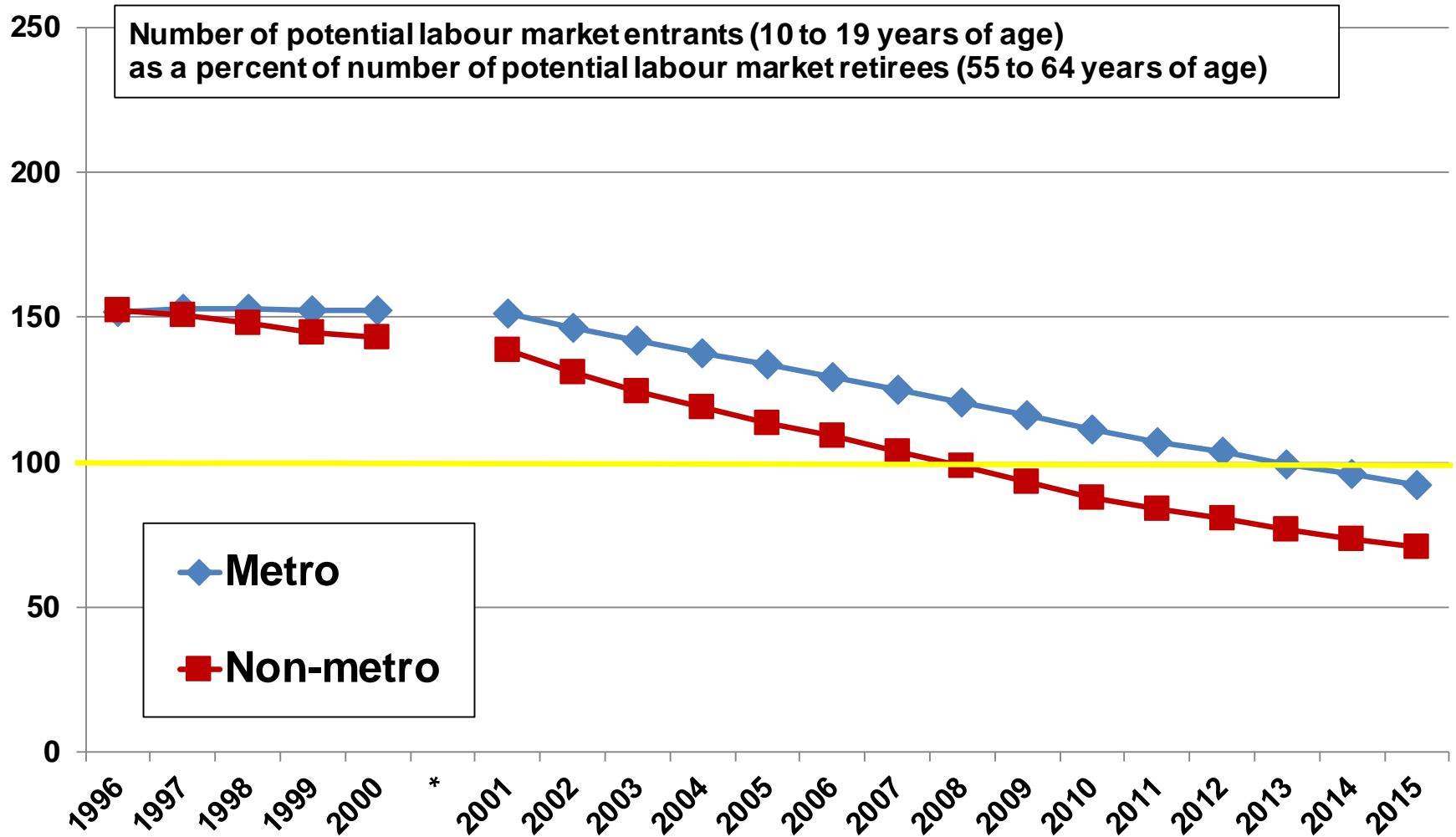
In the non-metro potential labour force (i.e. population 15+ yr.), the share in the core-age workforce (25-54 yr.) has declined to 43% and the population 55-64 yr. has increased to 19%



* Data for 1996 to 2000 are classified according to the 2006 grid for CMA boundaries and data since 2001 are classified according to the 2011 grid for CMA boundaries.

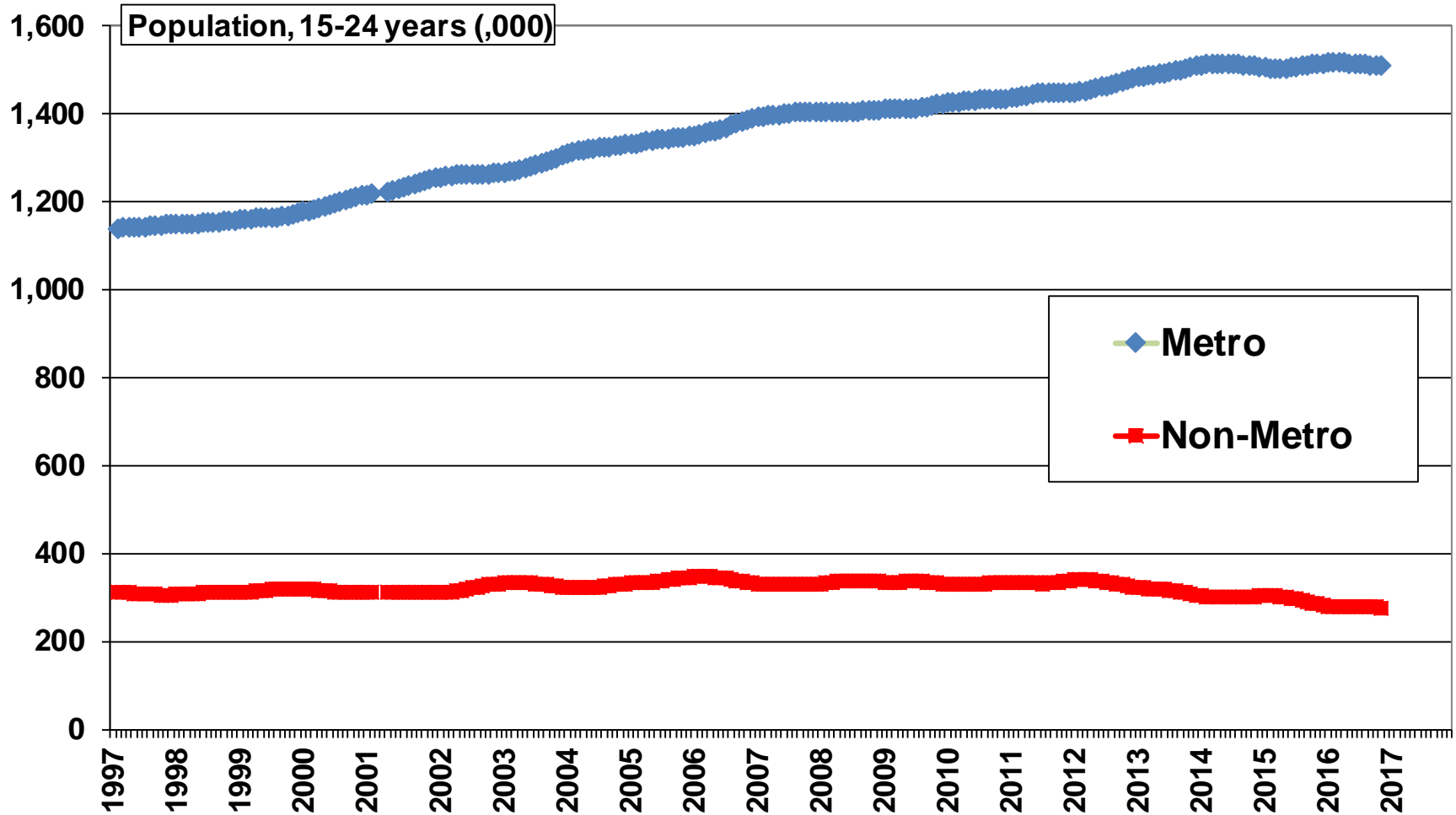
Source: Statistics Canada. **Annual Demographic Statistics**. CANSIM Table 051-0001 and 051-0056.

Demographic replacement of working age population fell below 100% in 2009, non-metro Ontario



*Data for 1996 to 2000 are classified according to the 2006 grid for CMA boundaries and data since 2001 are classified according to the 2011 grid for CMA boundaries. Source: Statistics Canada. **Annual Demographic Statistics**. CANSIM Table 051-0001 and 051-0056.

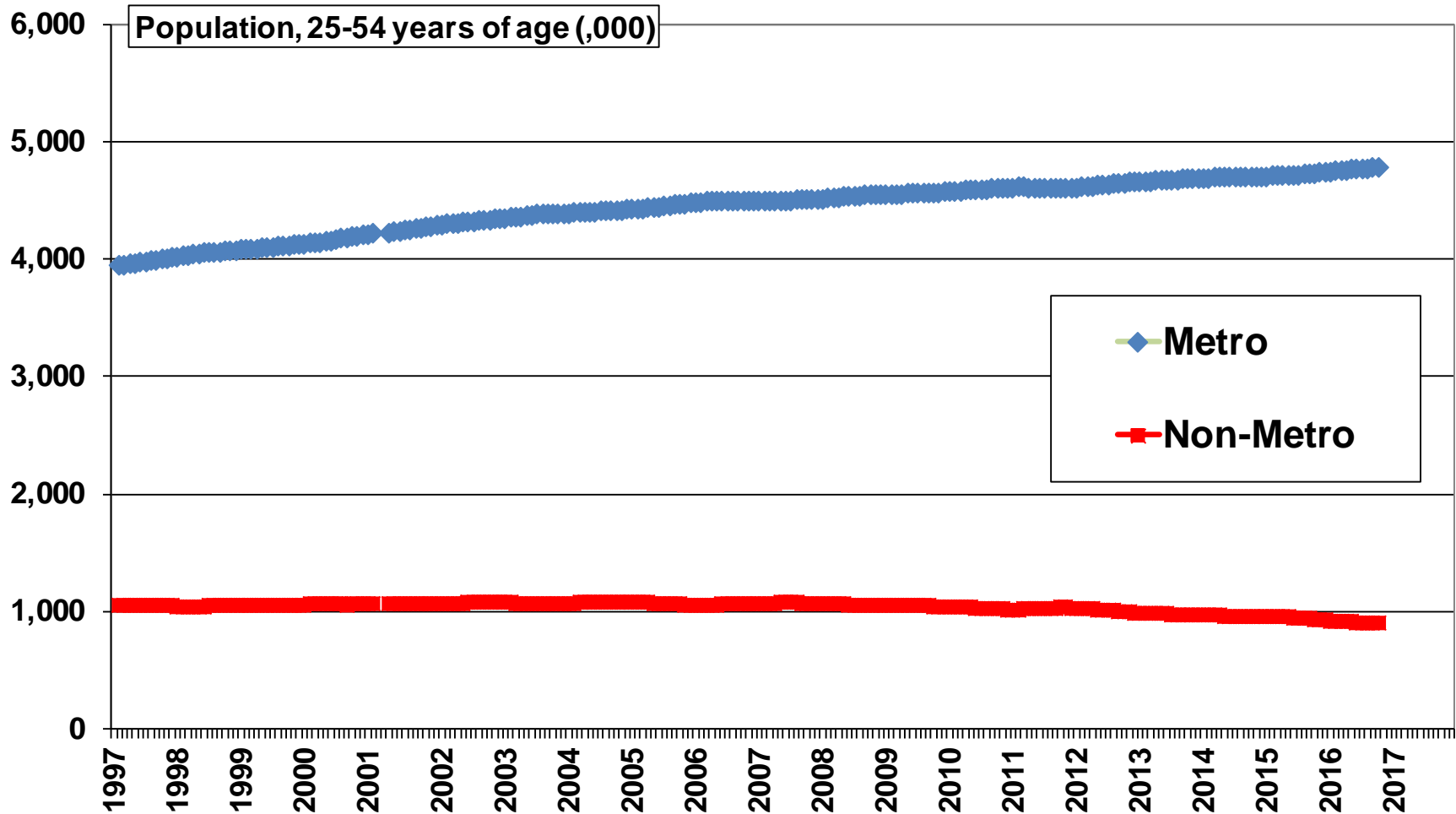
In non-metro Ontario, the population of youth, 15-24 years, has been declining since early 2012



Note: Students are included.

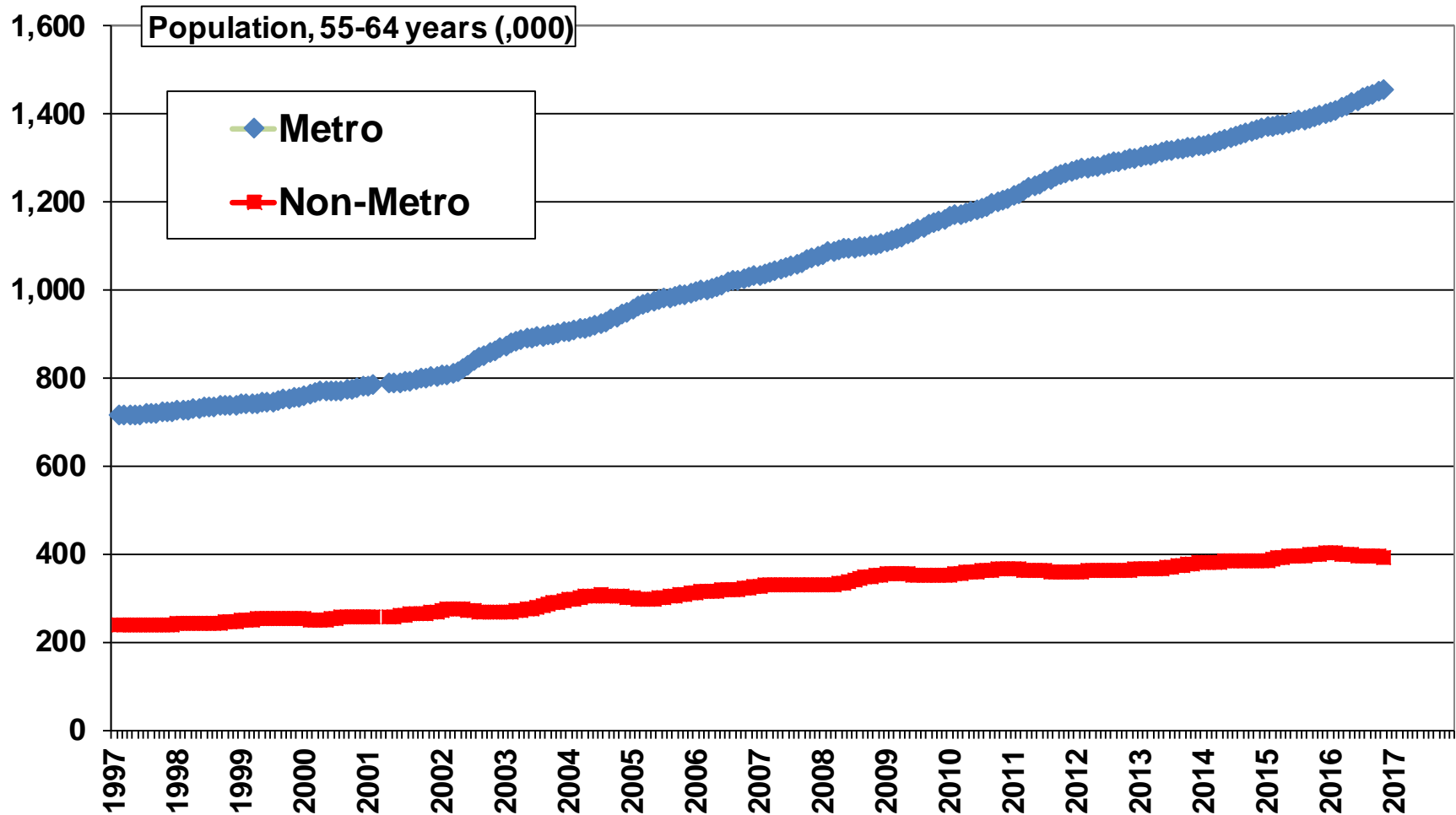
Source: Statistics Canada. Labour Force Survey, CANSIM Tables 282-0001 and 282-0128

In non-metro Ontario, the population 25-54 years of age has been declining since 2004



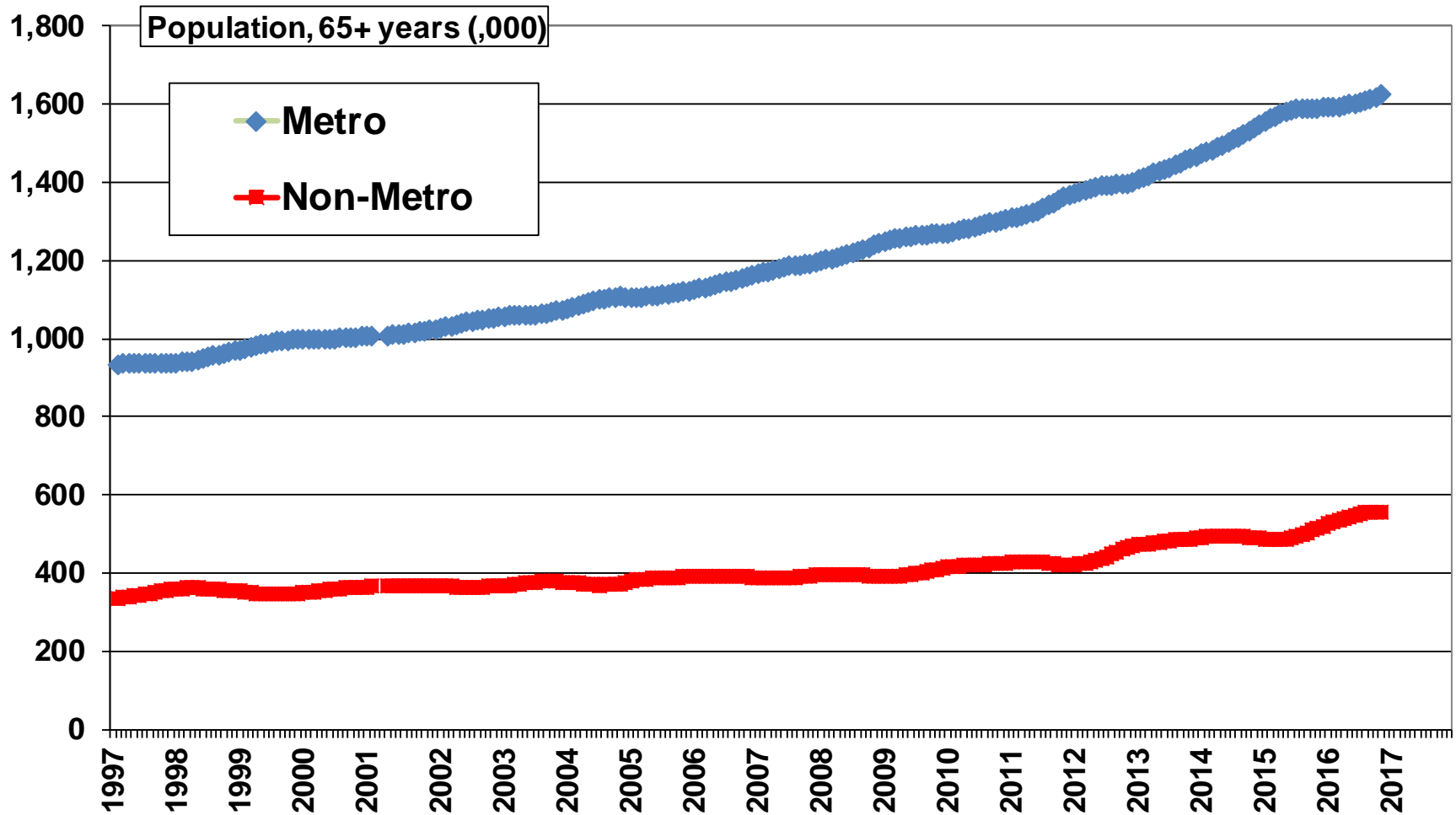
Source: Statistics Canada. Labour Force Survey, CANSIM Tables 282-0001 and 282-0128

In non-metro Ontario, the population of individuals, 55-64 years of age, has grown continuously



Source: Statistics Canada. Labour Force Survey, CANSIM Tables 282-0001 and 282-0128

The population of seniors, 65+ years, is growing in metro and non-metro Ontario



Source: Statistics Canada. Labour Force Survey, CANSIM Tables 282-0001 and 282-0128