

Maps:

Population distribution as of July 1 by census division

Population growth rates between July 1 (previous year) and June 30 (current year) by census division

Net internal migration rates between July 1 (previous year) and June 30 (current year) by census division

Median age as of July 1 by census division

Proportion of population 65 years of age and over as of July 1 by census division

Maps:

Population distribution as of July 1 by census division

Population growth rates between July 1 (previous year) and June 30 (current year) by census division

Net internal migration rates between July 1 (previous year) and June 30 (current year) by census division

Median age as of July 1 by census division

Proportion of population 65 years of age and over as of July 1 by census division

Maps:

Population distribution as of July 1 by census division

Population growth rates between July 1 (previous year) and June 30 (current year) by census division

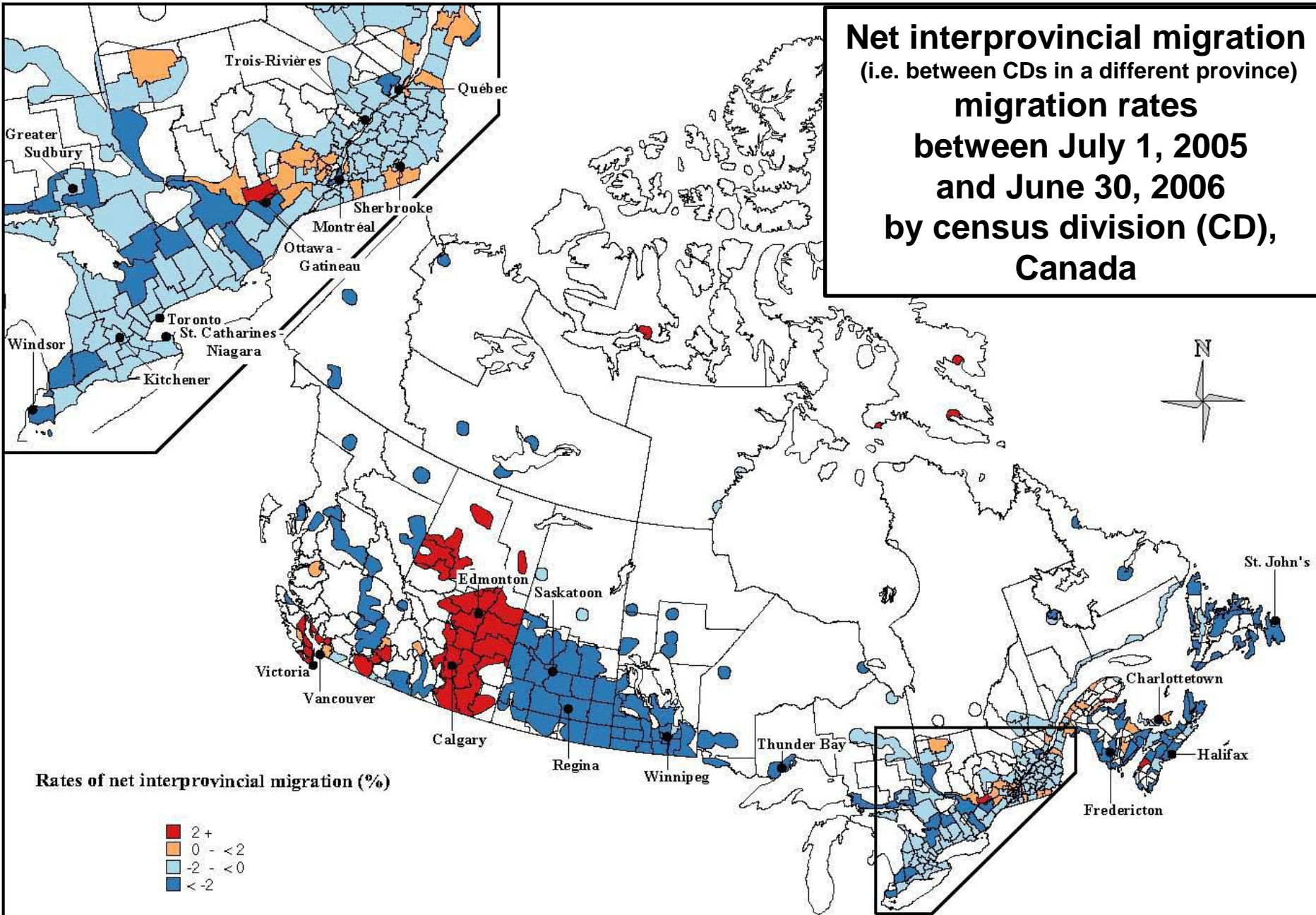
Net internal migration rates between July 1 (previous year) and June 30 (current year) by census division

Net interprovincial migration (i.e. into or out of each CD from / to a different province)

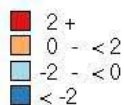
Median age as of July 1 by census division

Proportion of population 65 years of age and over as of July 1 by census division

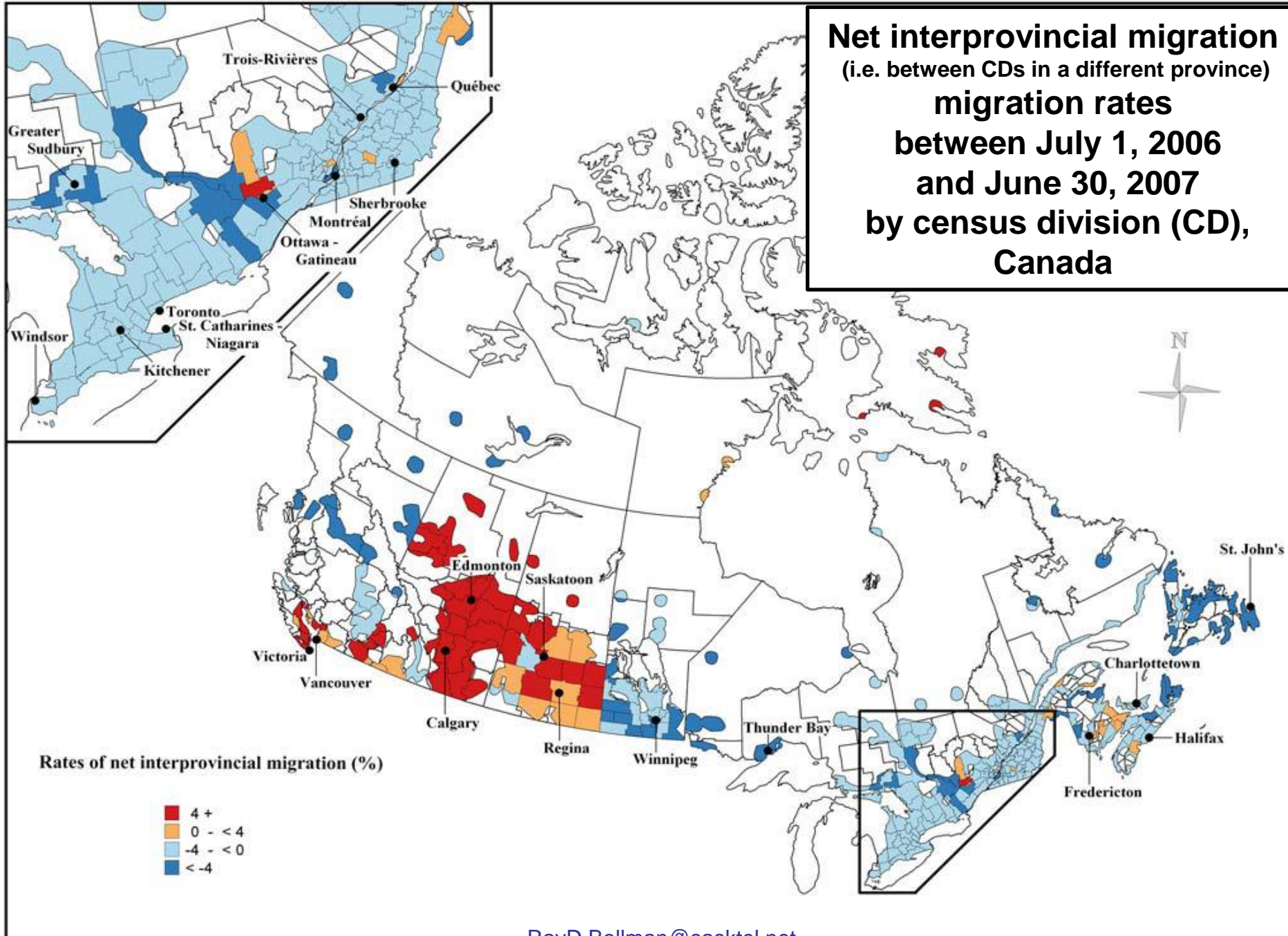
Net interprovincial migration
(i.e. between CDs in a different province)
migration rates
between July 1, 2005
and June 30, 2006
by census division (CD),
Canada



Rates of net interprovincial migration (%)



Net interprovincial migration
(i.e. between CDs in a different province)
migration rates
between July 1, 2006
and June 30, 2007
by census division (CD),
Canada



Maps:

Population distribution as of July 1 by census division

Population growth rates between July 1 (previous year) and June 30 (current year) by census division

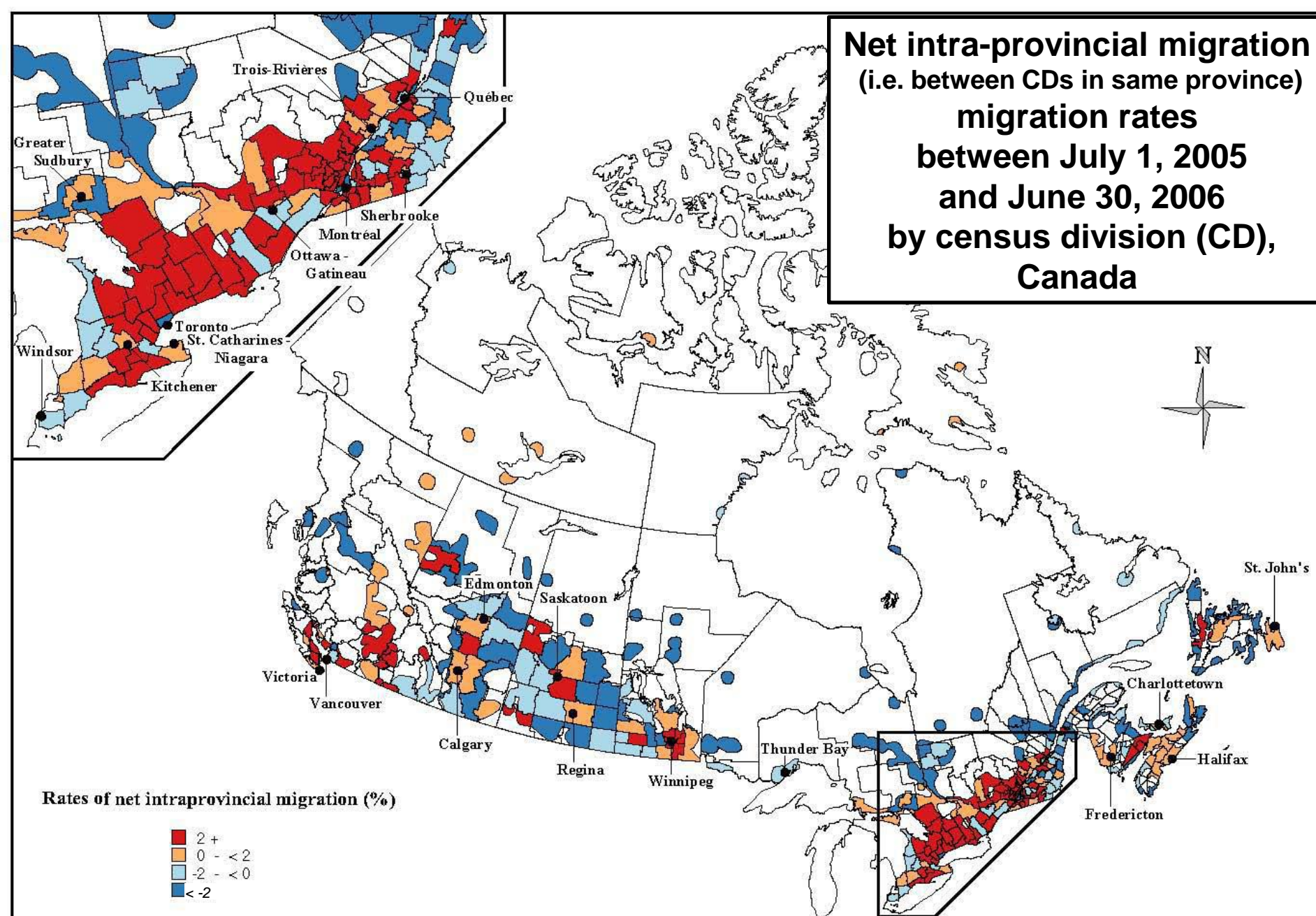
Net internal migration rates between July 1 (previous year) and June 30 (current year) by census division

Net intra-provincial migration (i.e. into or out of each CD from / to another CD in the same province)

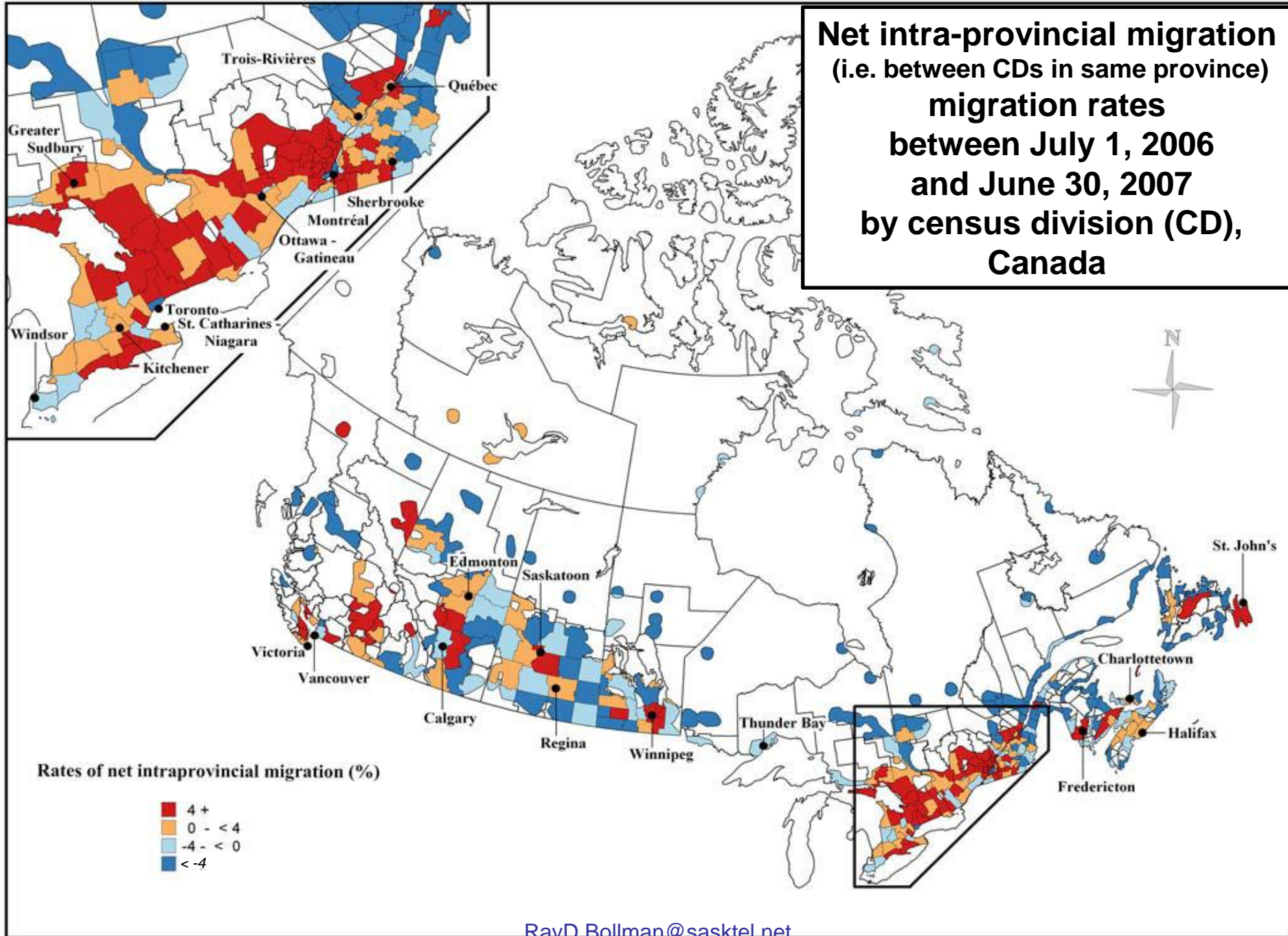
Median age as of July 1 by census division

Proportion of population 65 years of age and over as of July 1 by census division

**Net intra-provincial migration
(i.e. between CDs in same province)
migration rates
between July 1, 2005
and June 30, 2006
by census division (CD),
Canada**



**Net intra-provincial migration
(i.e. between CDs in same province)
migration rates
between July 1, 2006
and June 30, 2007
by census division (CD),
Canada**



Maps:

Population distribution as of July 1 by census division

Population growth rates between July 1 (previous year) and June 30 (current year) by census division

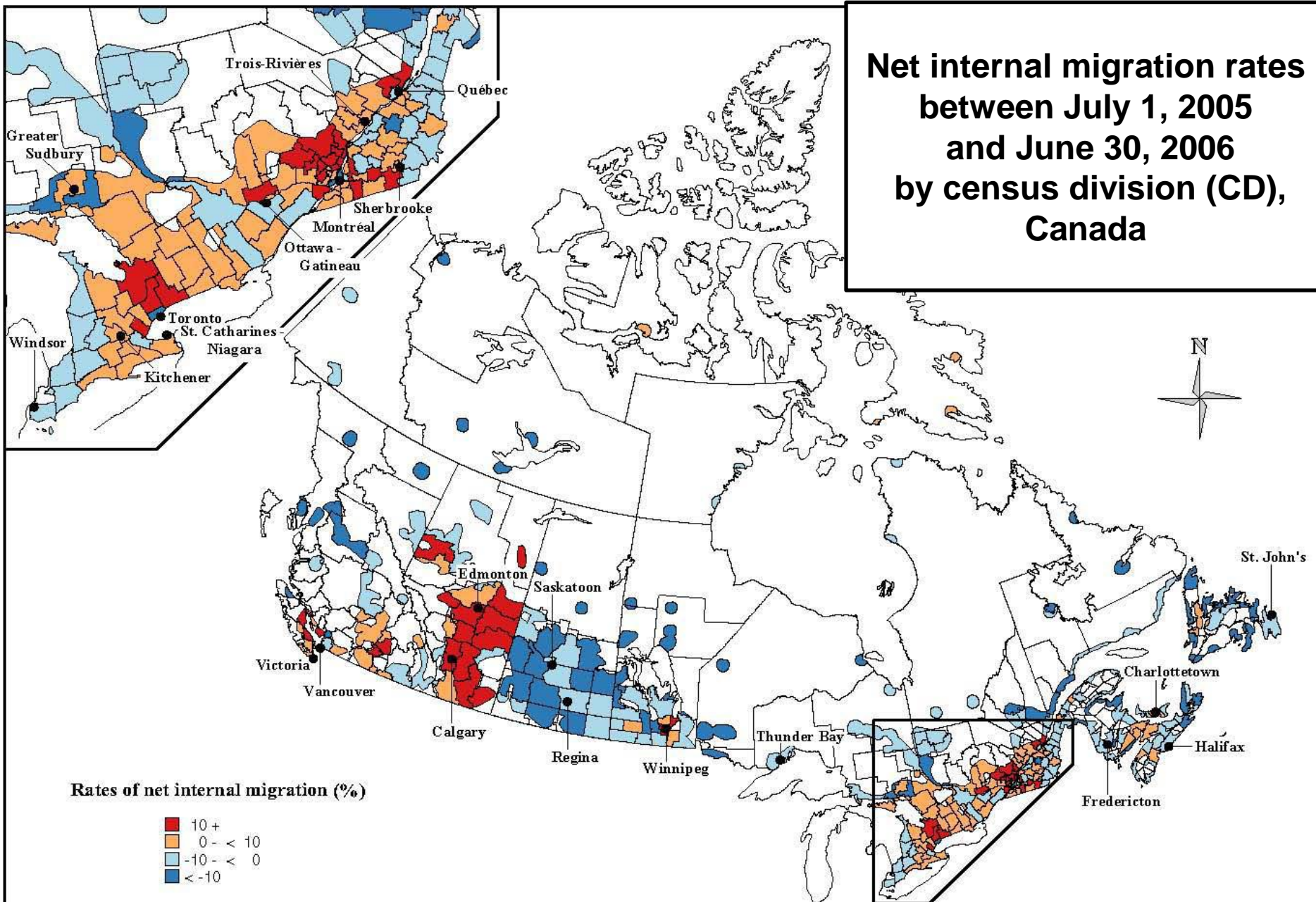
Net internal migration rates between July 1 (previous year) and June 30 (current year) by census division

= net interprovincial PLUS net intra-provincial

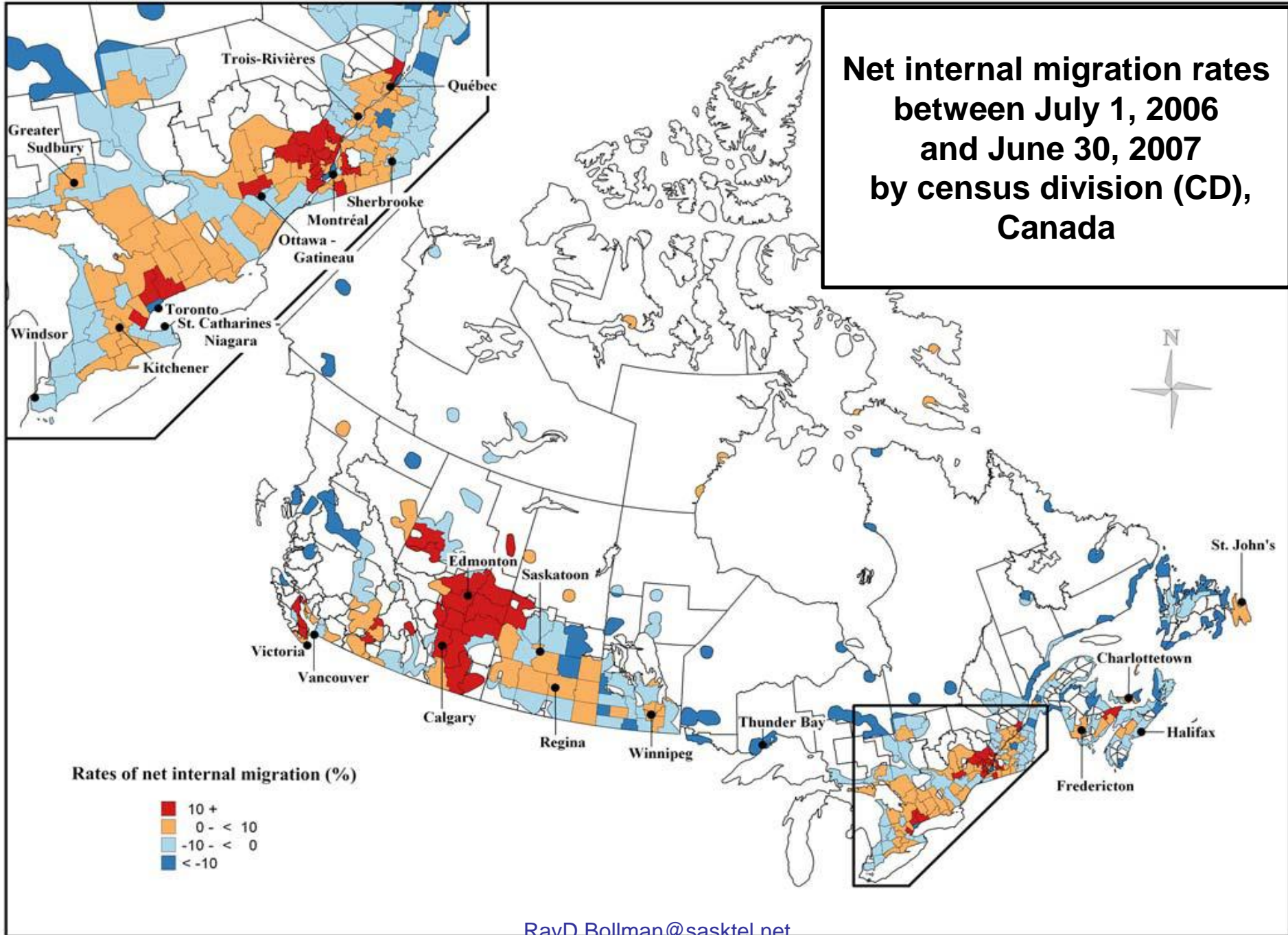
Median age as of July 1 by census division

Proportion of population 65 years of age and over as of July 1 by census division

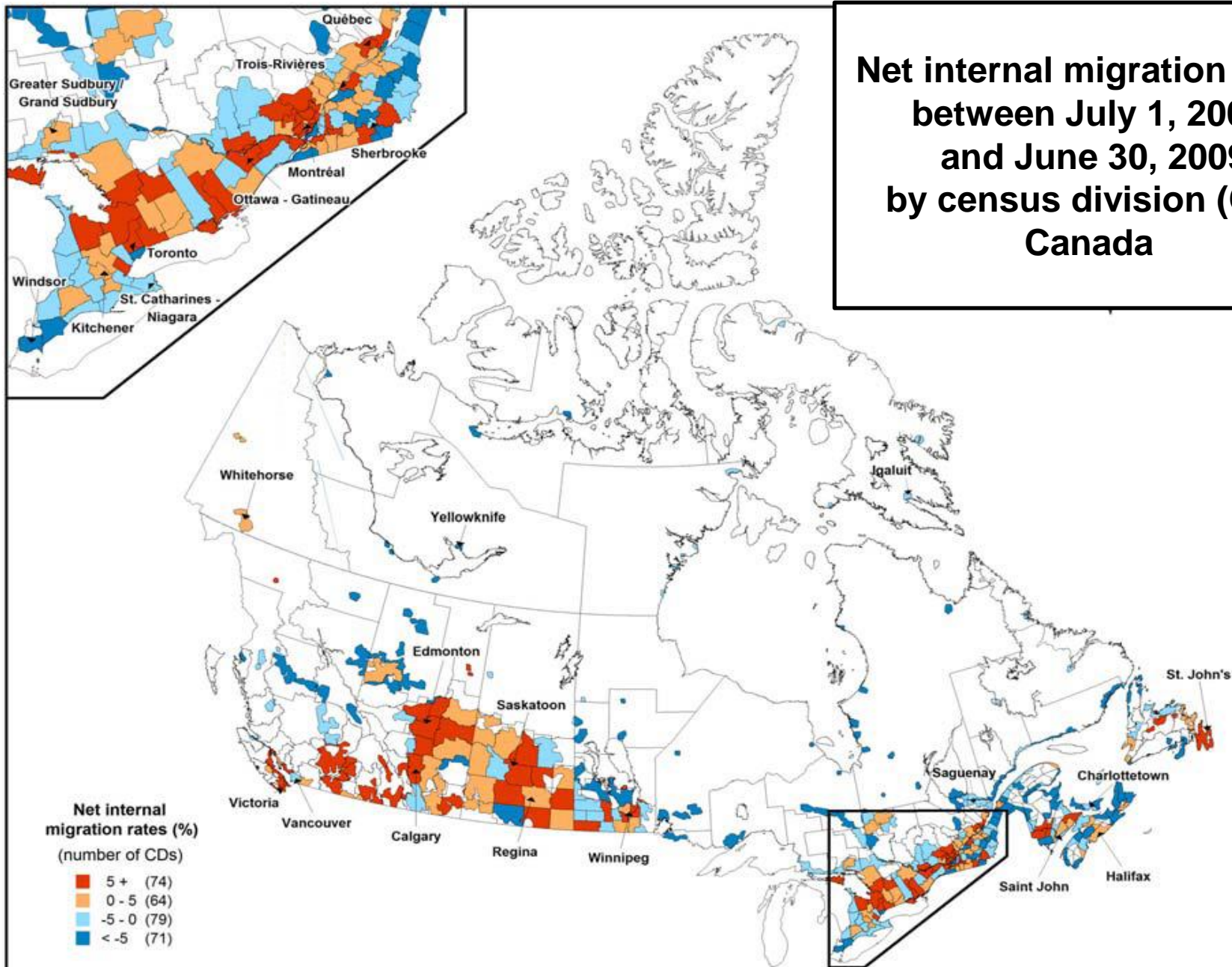
**Net internal migration rates
between July 1, 2005
and June 30, 2006
by census division (CD),
Canada**



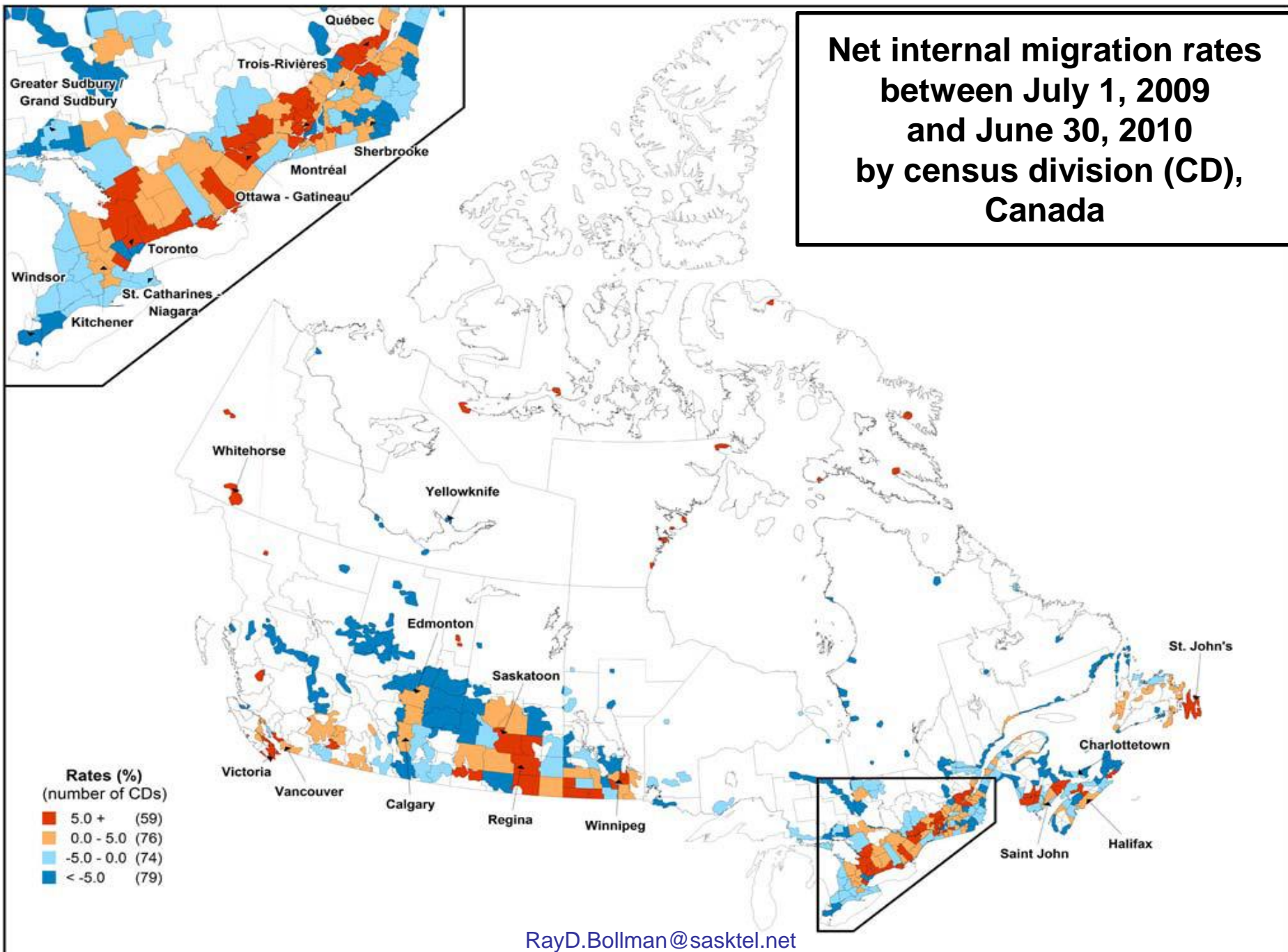
**Net internal migration rates
between July 1, 2006
and June 30, 2007
by census division (CD),
Canada**



**Net internal migration rates
between July 1, 2008
and June 30, 2009
by census division (CD),
Canada**

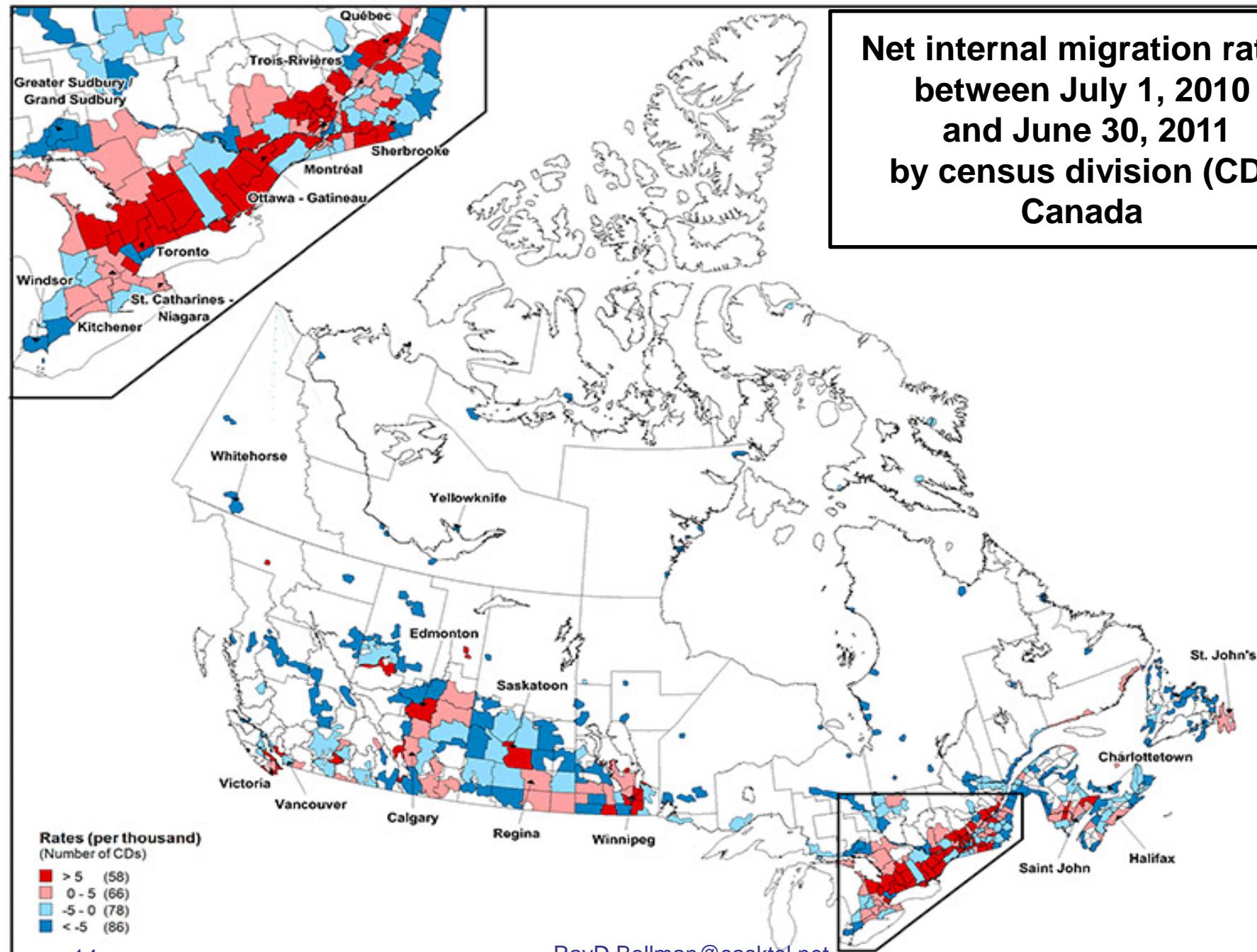


Net internal migration rates between July 1, 2009 and June 30, 2010 by census division (CD), Canada

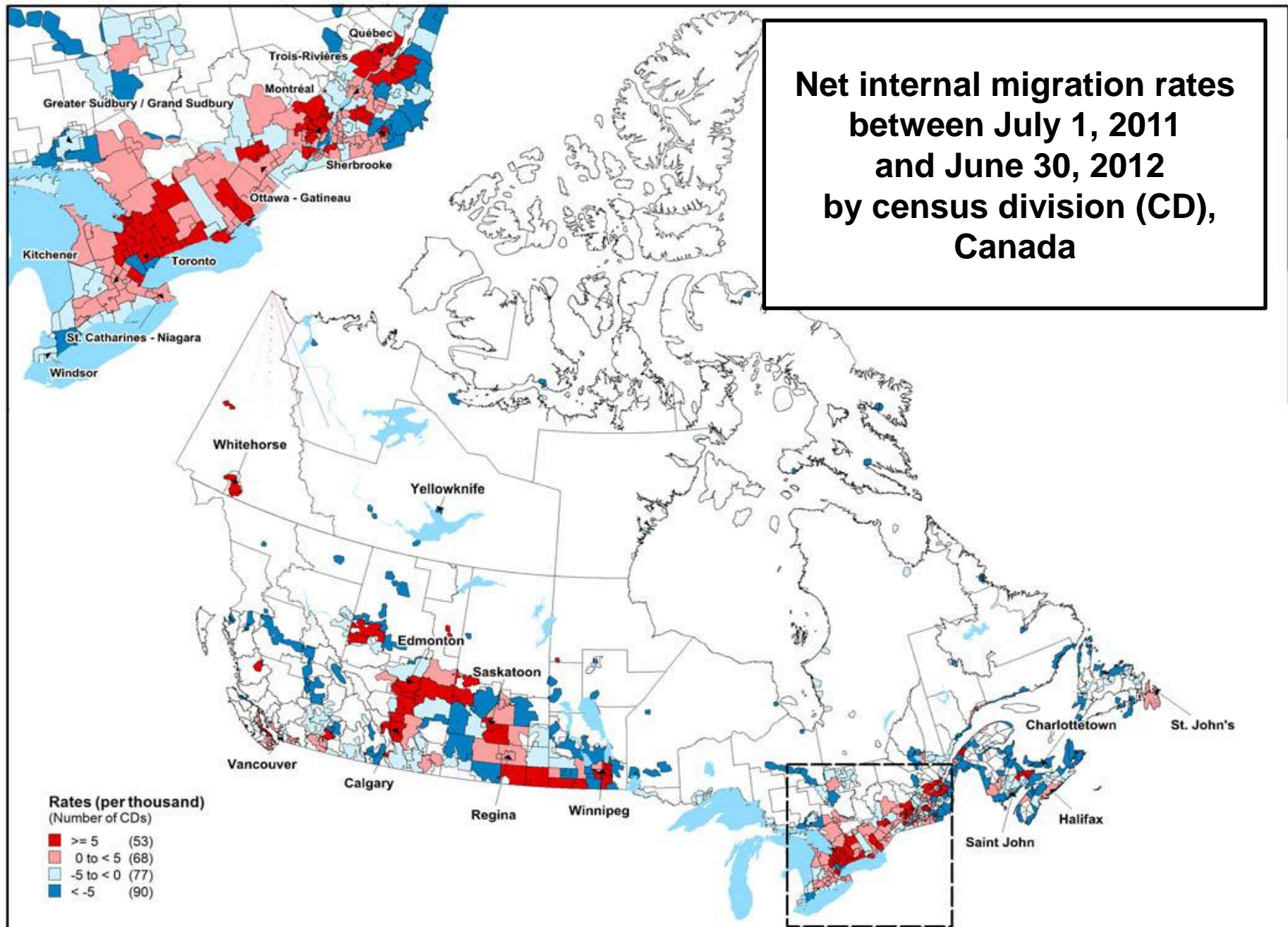


RayD.Bollman@sasktel.net

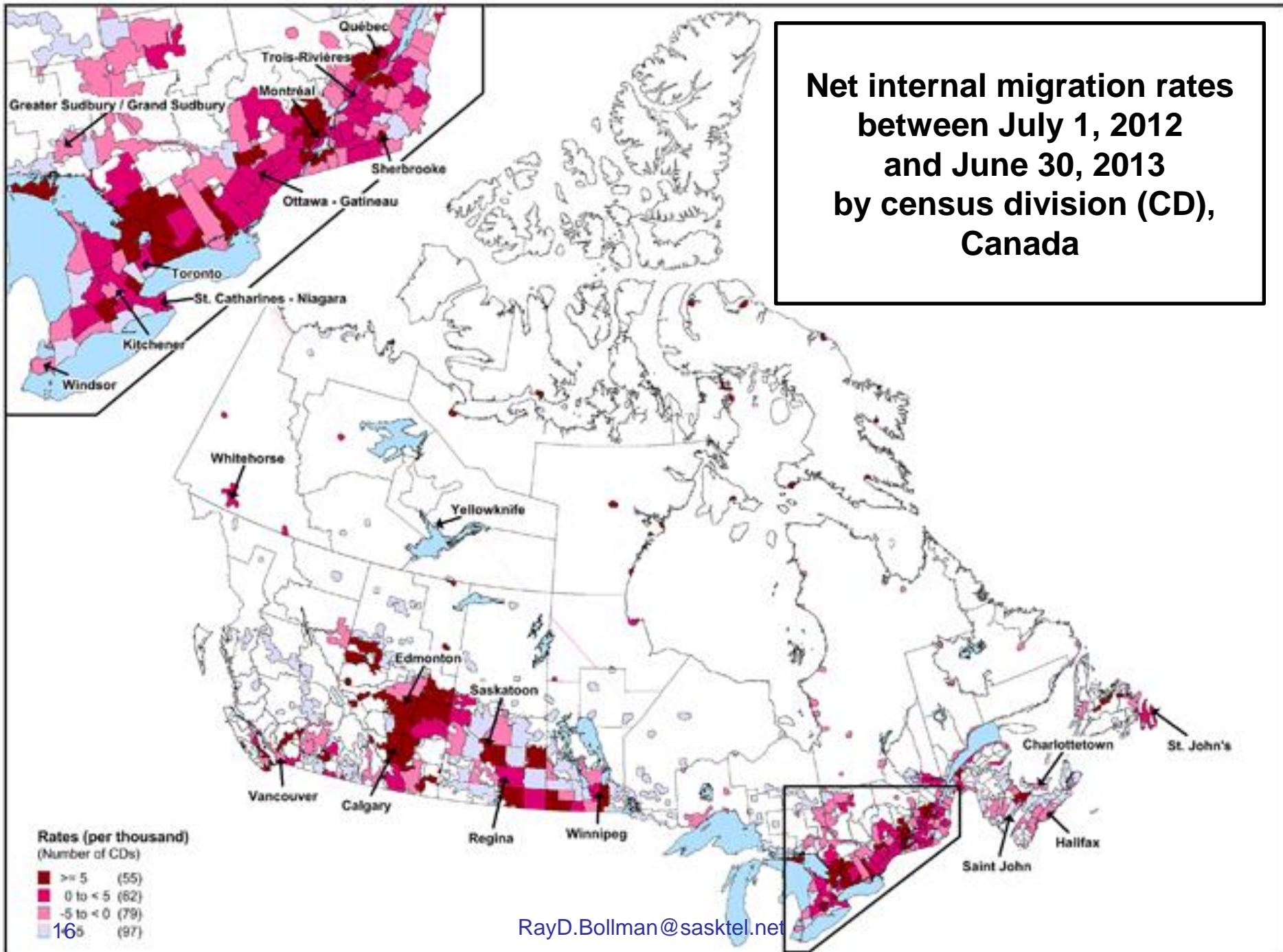
**Net internal migration rates
between July 1, 2010
and June 30, 2011
by census division (CD),
Canada**



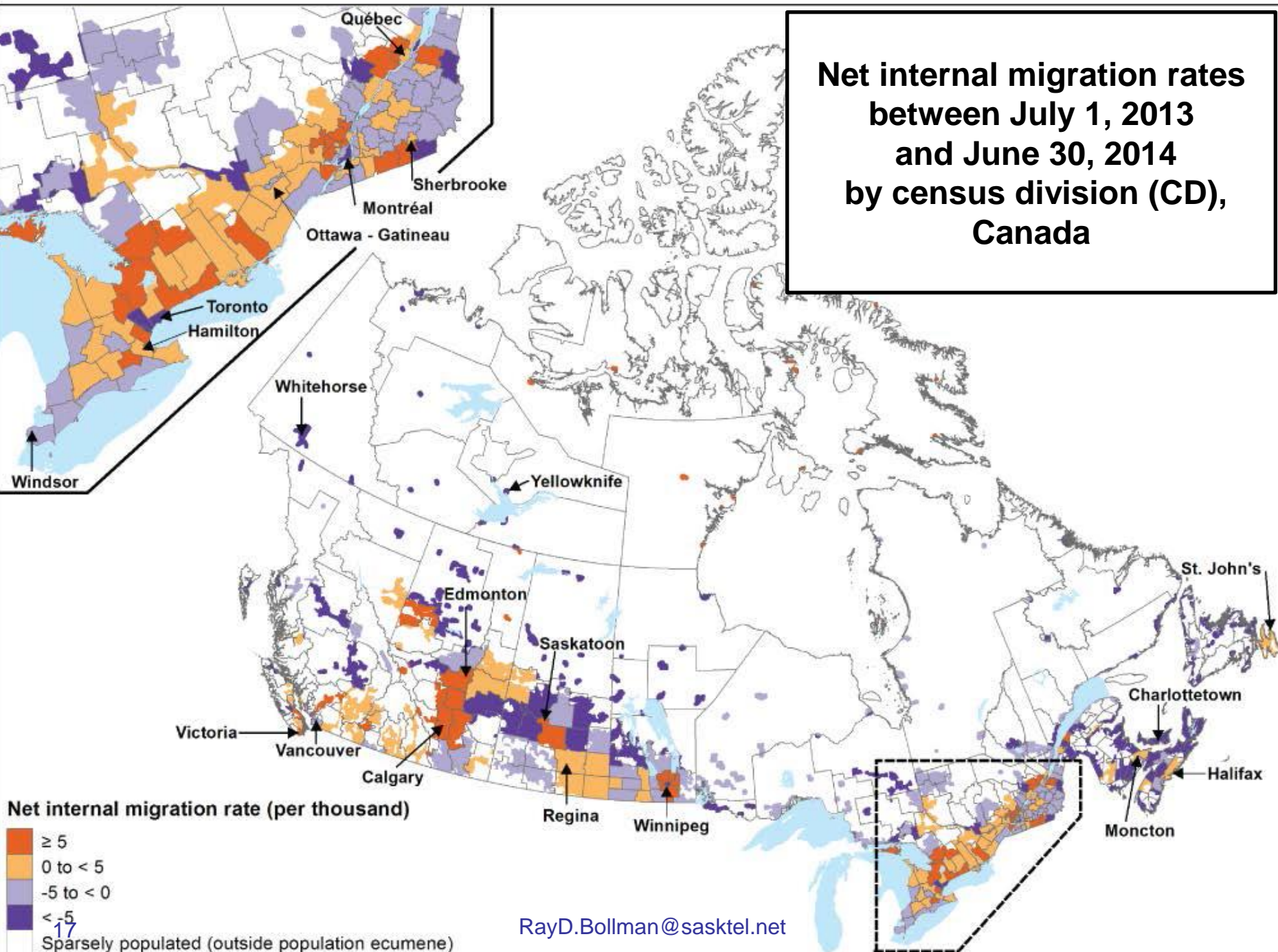
**Net internal migration rates
between July 1, 2011
and June 30, 2012
by census division (CD),
Canada**



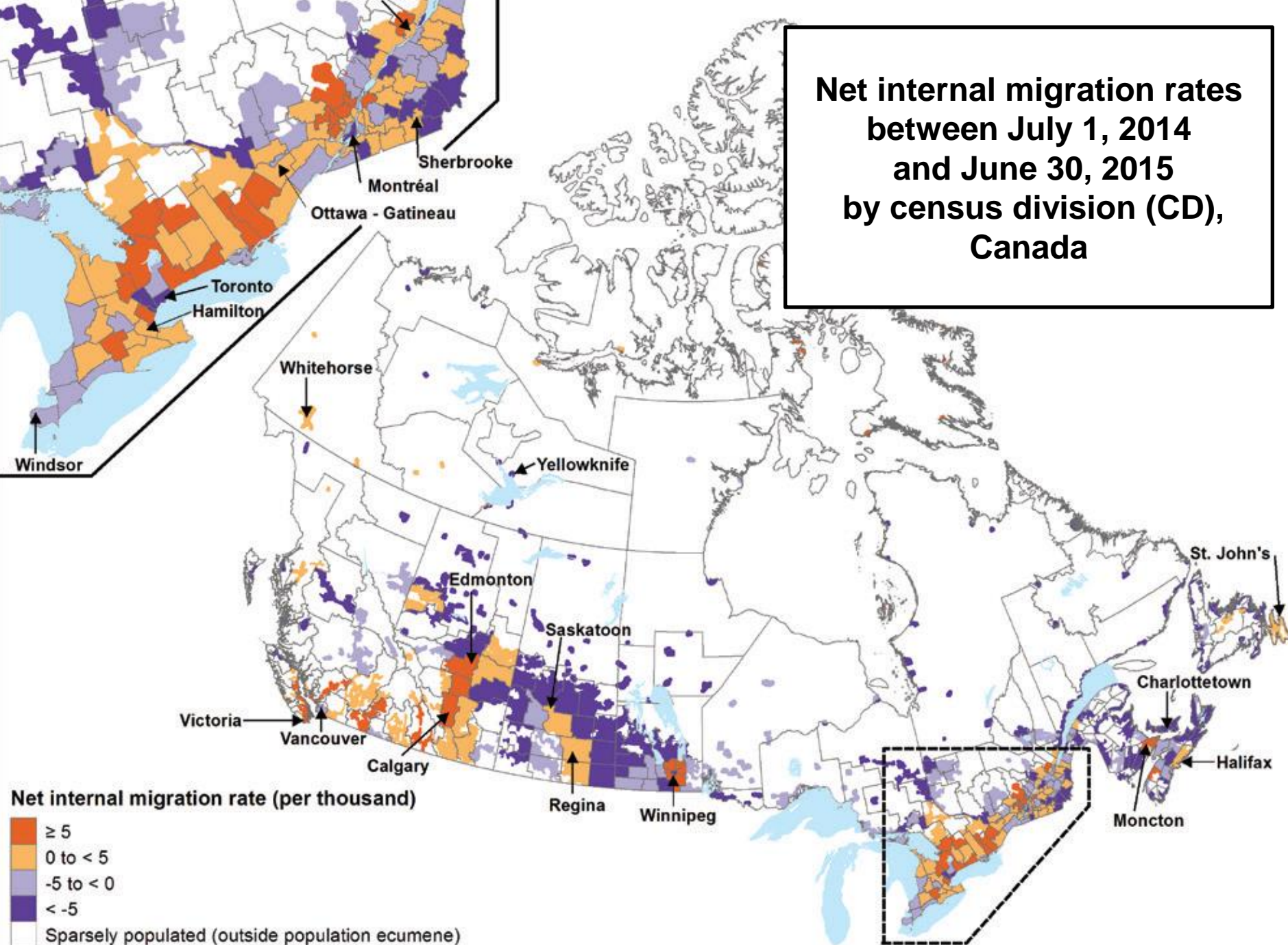
**Net internal migration rates
between July 1, 2012
and June 30, 2013
by census division (CD),
Canada**



**Net internal migration rates
between July 1, 2013
and June 30, 2014
by census division (CD),
Canada**



**Net internal migration rates
between July 1, 2014
and June 30, 2015
by census division (CD),
Canada**



Maps:

Population distribution as of July 1 by census division

Population growth rates between July 1 (previous year) and June 30 (current year) by census division

Net internal migration rates between July 1 (previous year) and June 30 (current year) by census division

Median age as of July 1 by census division

Proportion of population 65 years of age and over as of July 1 by census division

Maps:

Population distribution as of July 1 by census division

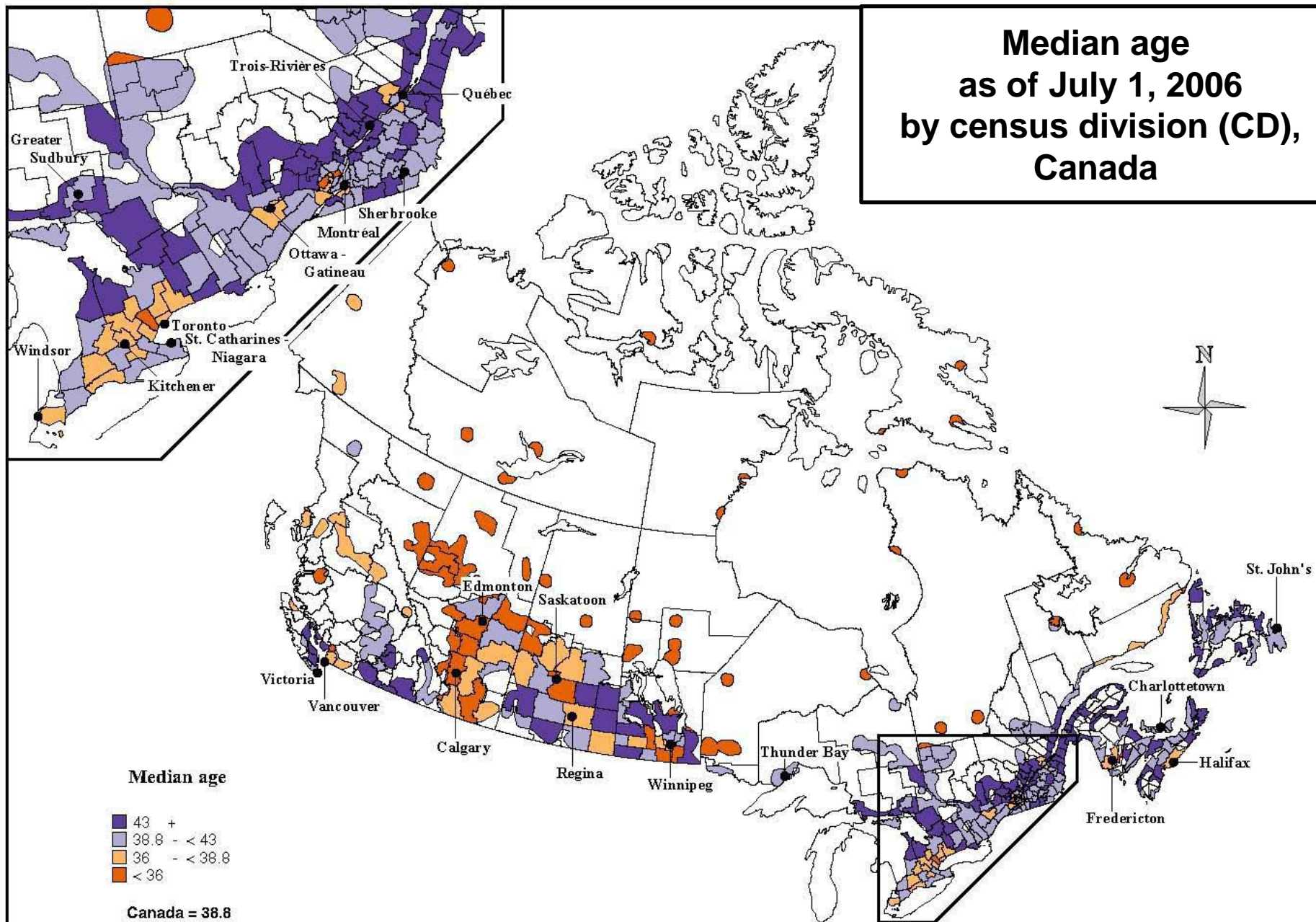
Population growth rates between July 1 (previous year) and June 30
(current year) by census division

Net internal migration rates between July 1 (previous year) and June 30
(current year) by census division

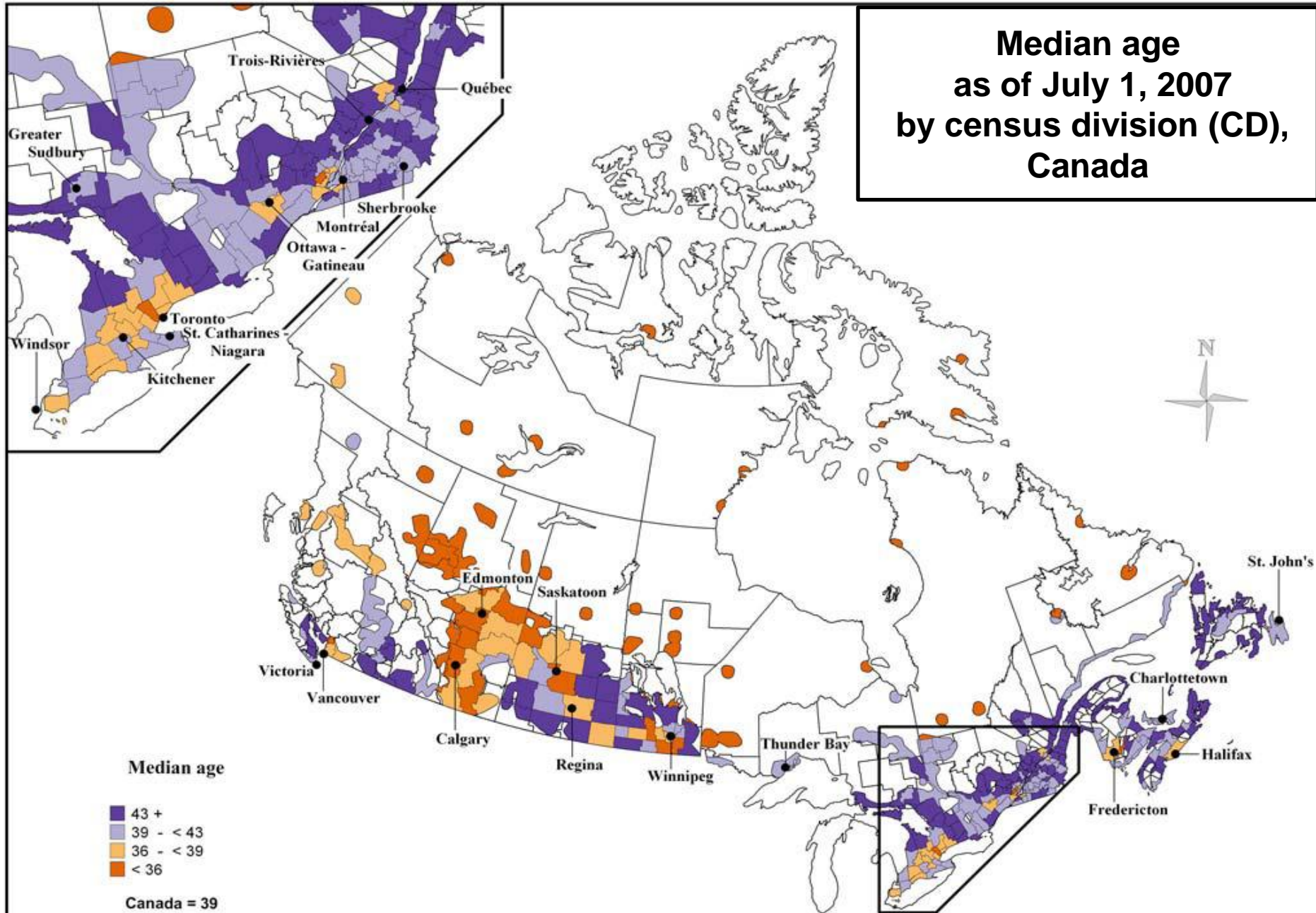
Median age as of July 1 by census division

Proportion of population 65 years of age and over as of July 1
by census division

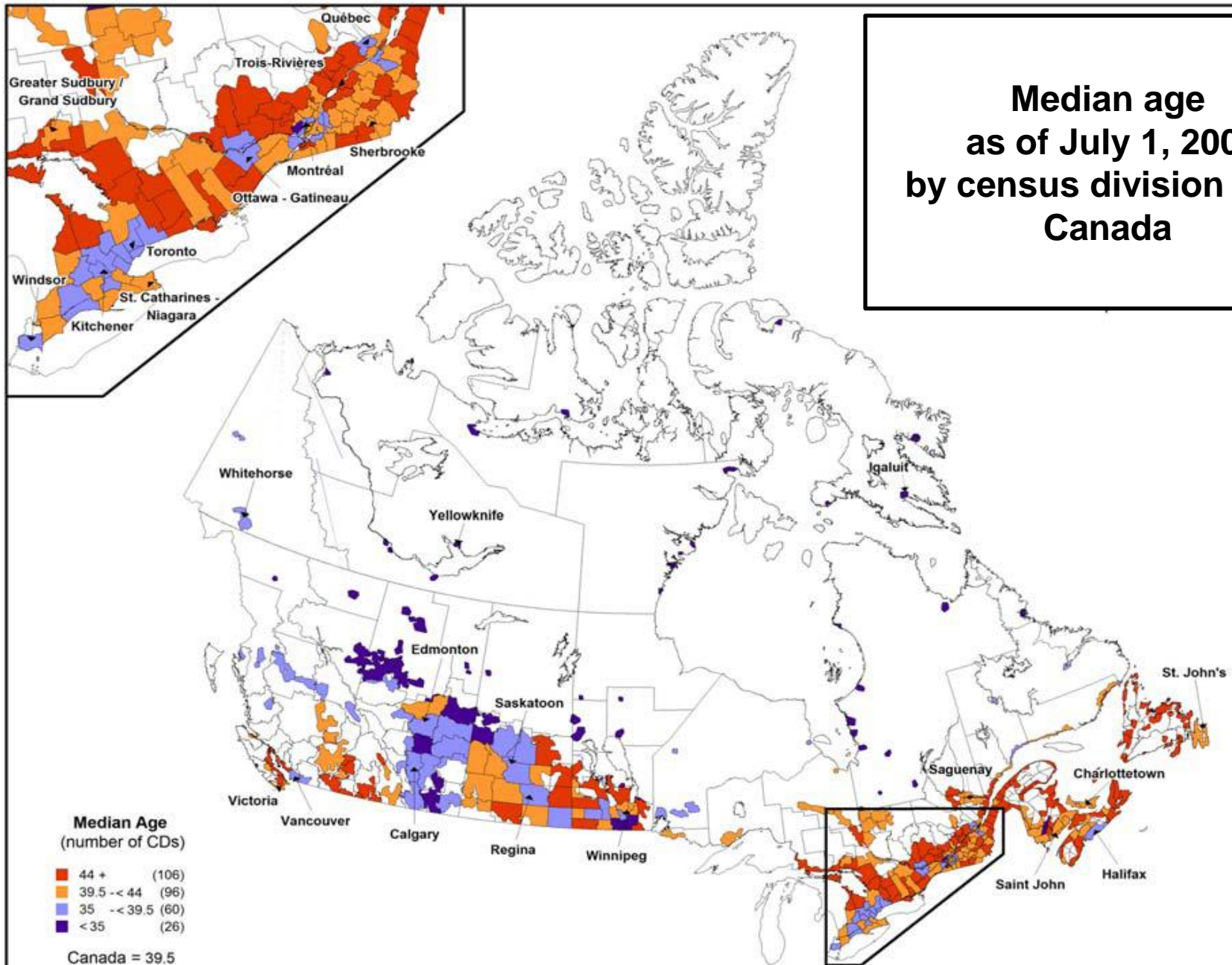
Median age as of July 1, 2006 by census division (CD), Canada



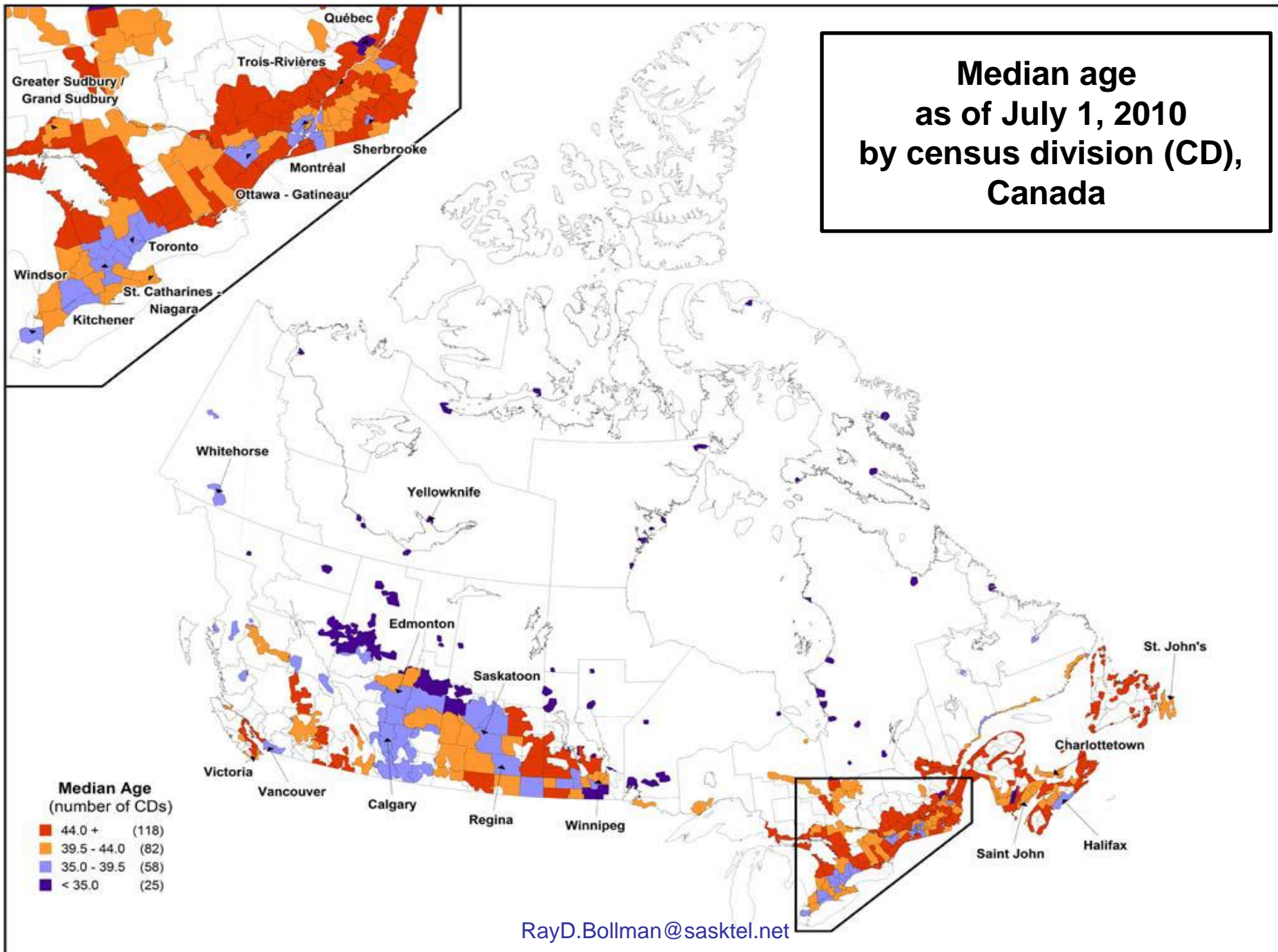
**Median age
as of July 1, 2007
by census division (CD),
Canada**



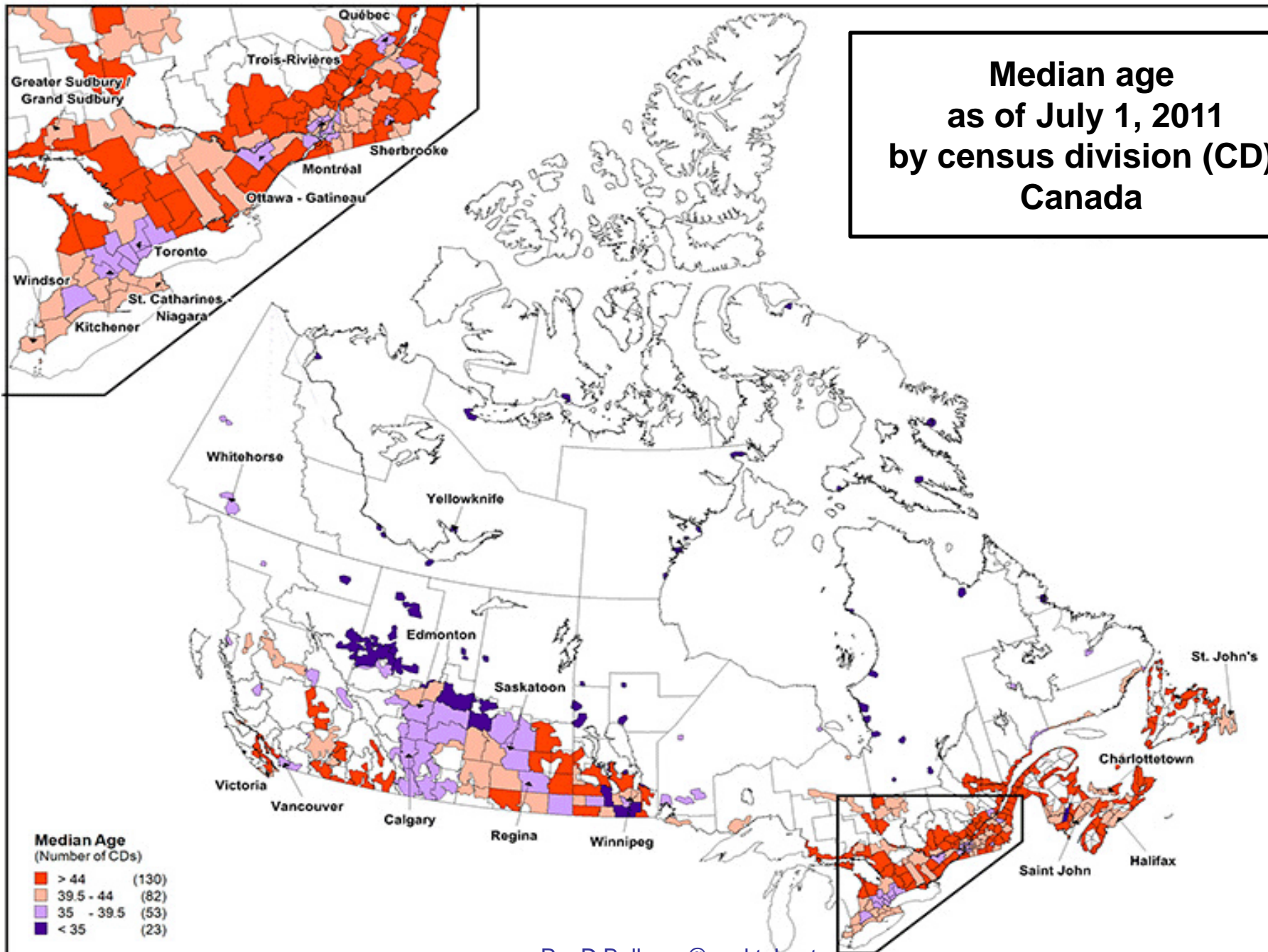
**Median age
as of July 1, 2009
by census division (CD),
Canada**



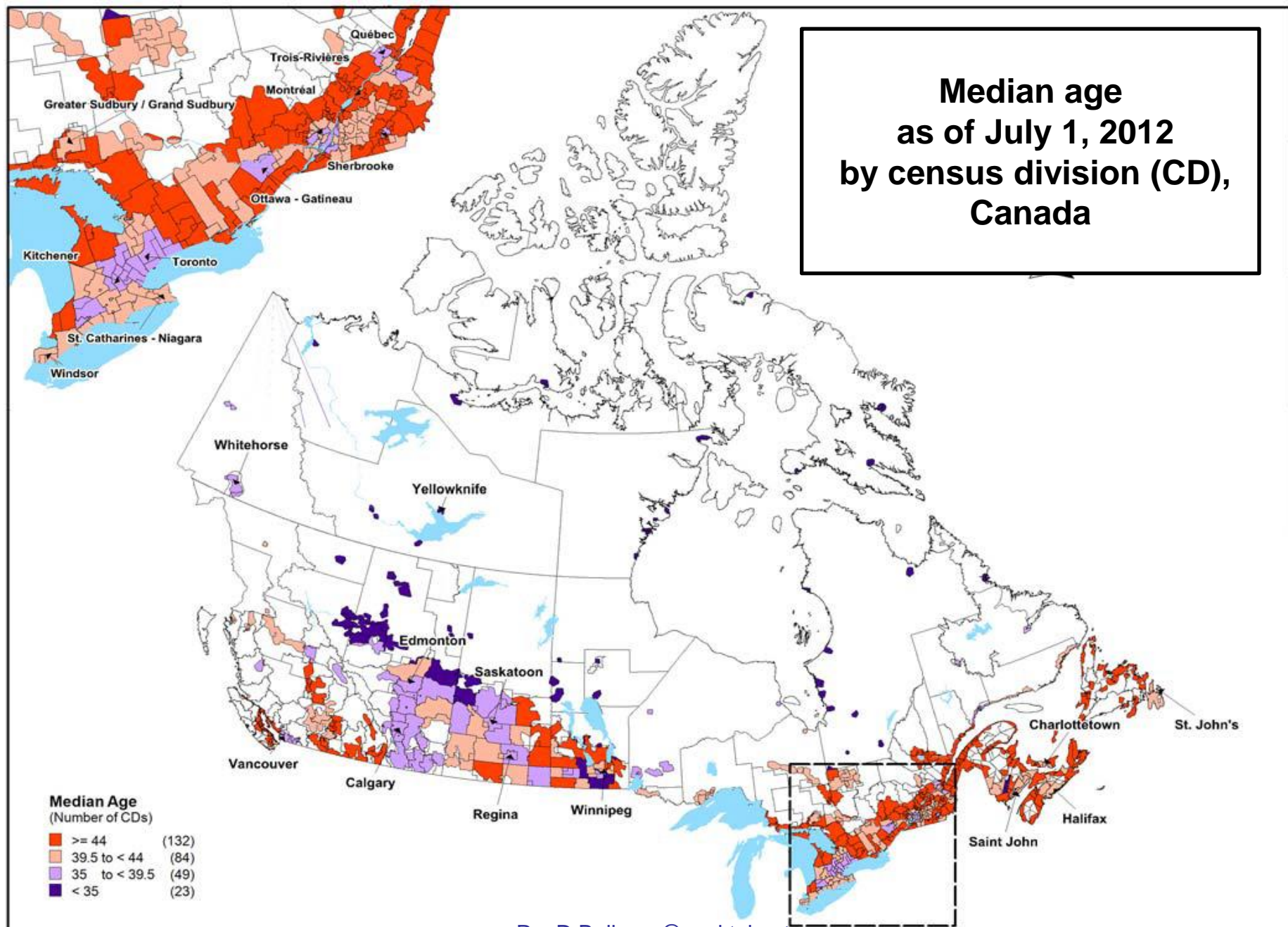
**Median age
as of July 1, 2010
by census division (CD),
Canada**



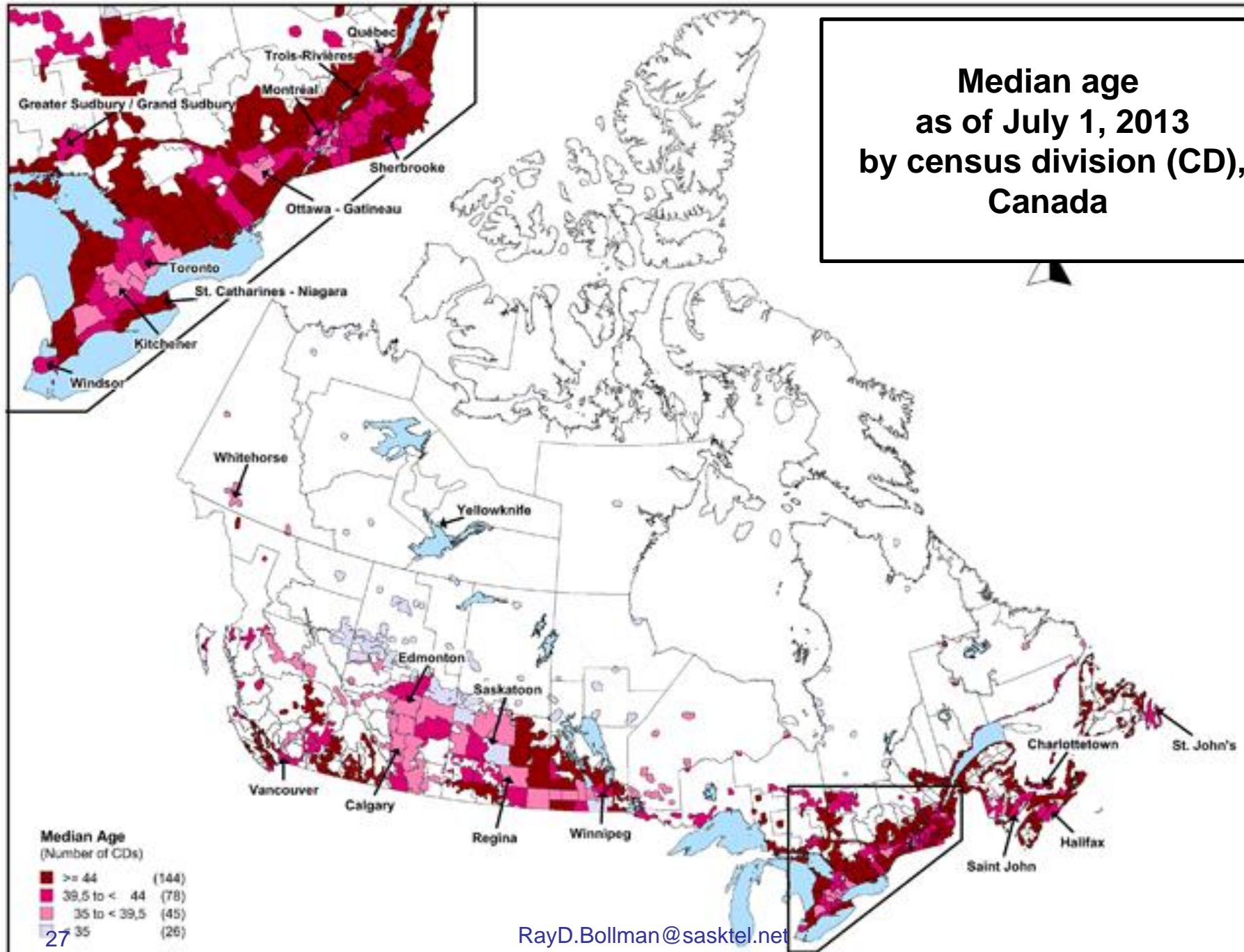
**Median age
as of July 1, 2011
by census division (CD),
Canada**



**Median age
as of July 1, 2012
by census division (CD),
Canada**

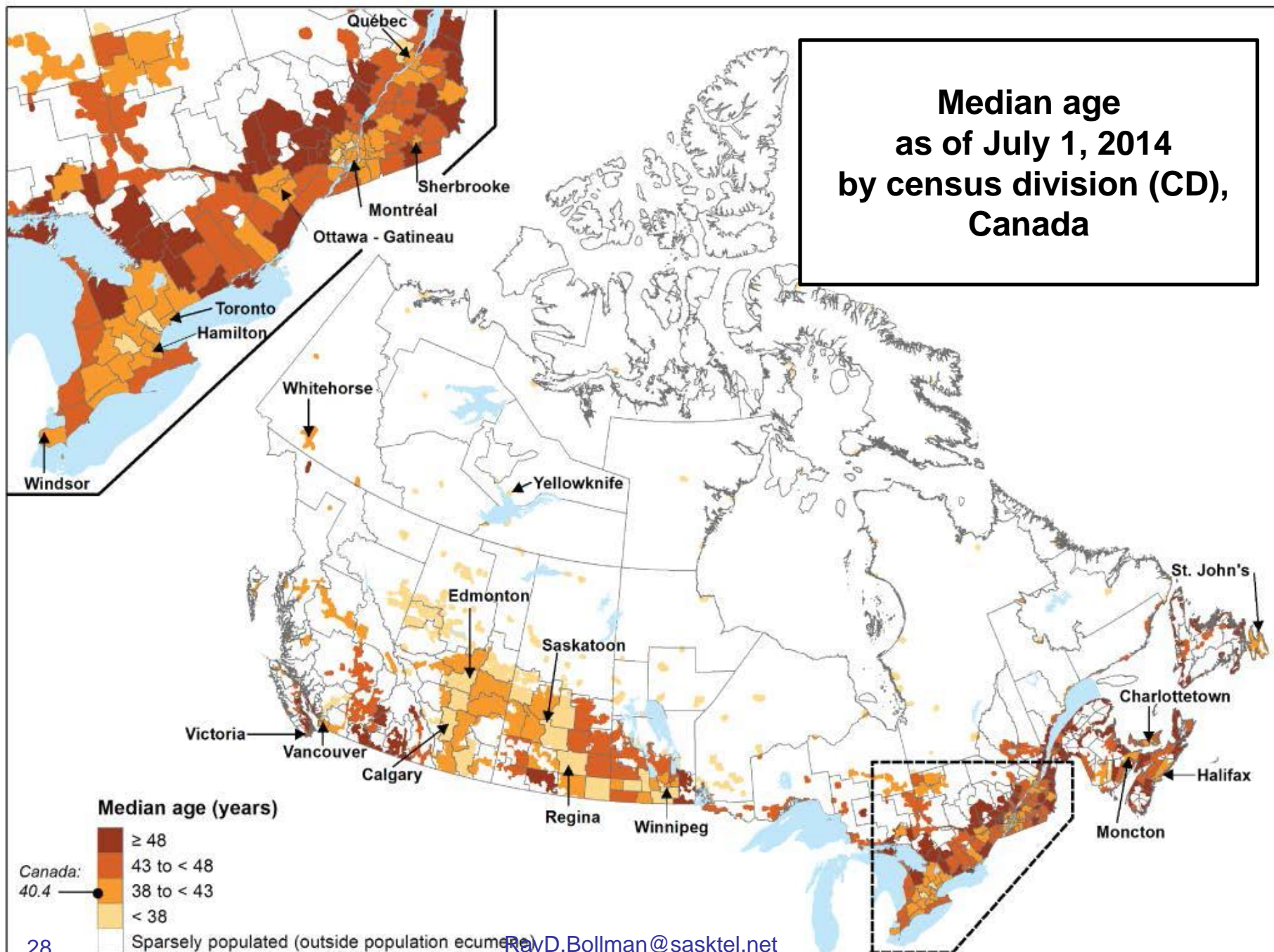


**Median age
as of July 1, 2013
by census division (CD),
Canada**

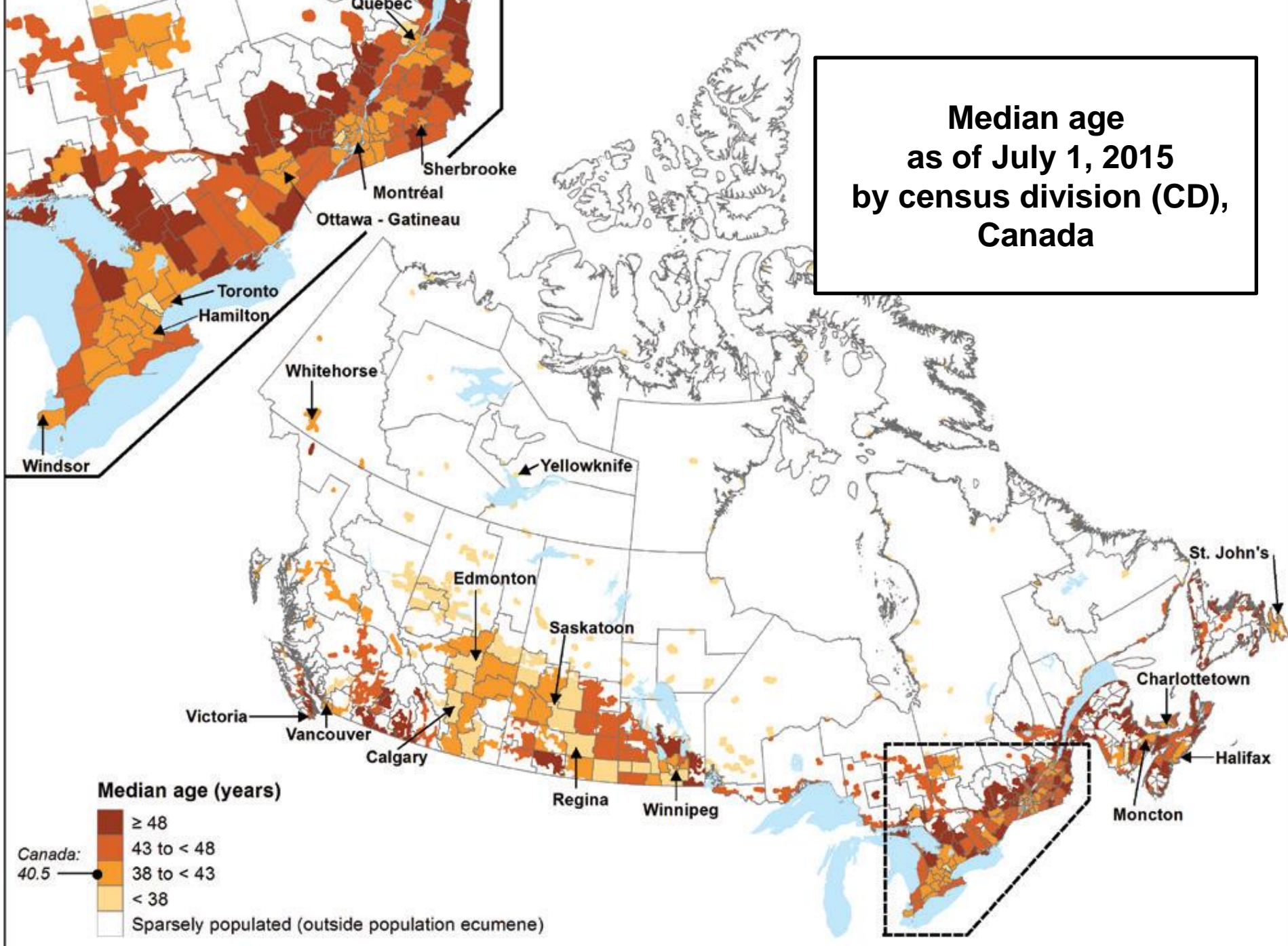


RayD.Bollman@sasktel.net

**Median age
as of July 1, 2014
by census division (CD),
Canada**



**Median age
as of July 1, 2015
by census division (CD),
Canada**



Maps:

Population distribution as of July 1 by census division

Population growth rates between July 1 (previous year) and June 30 (current year) by census division

Net internal migration rates between July 1 (previous year) and June 30 (current year) by census division

Median age as of July 1 by census division

Proportion of population 65 years of age and over as of July 1 by census division

Maps:

Population distribution as of July 1 by census division

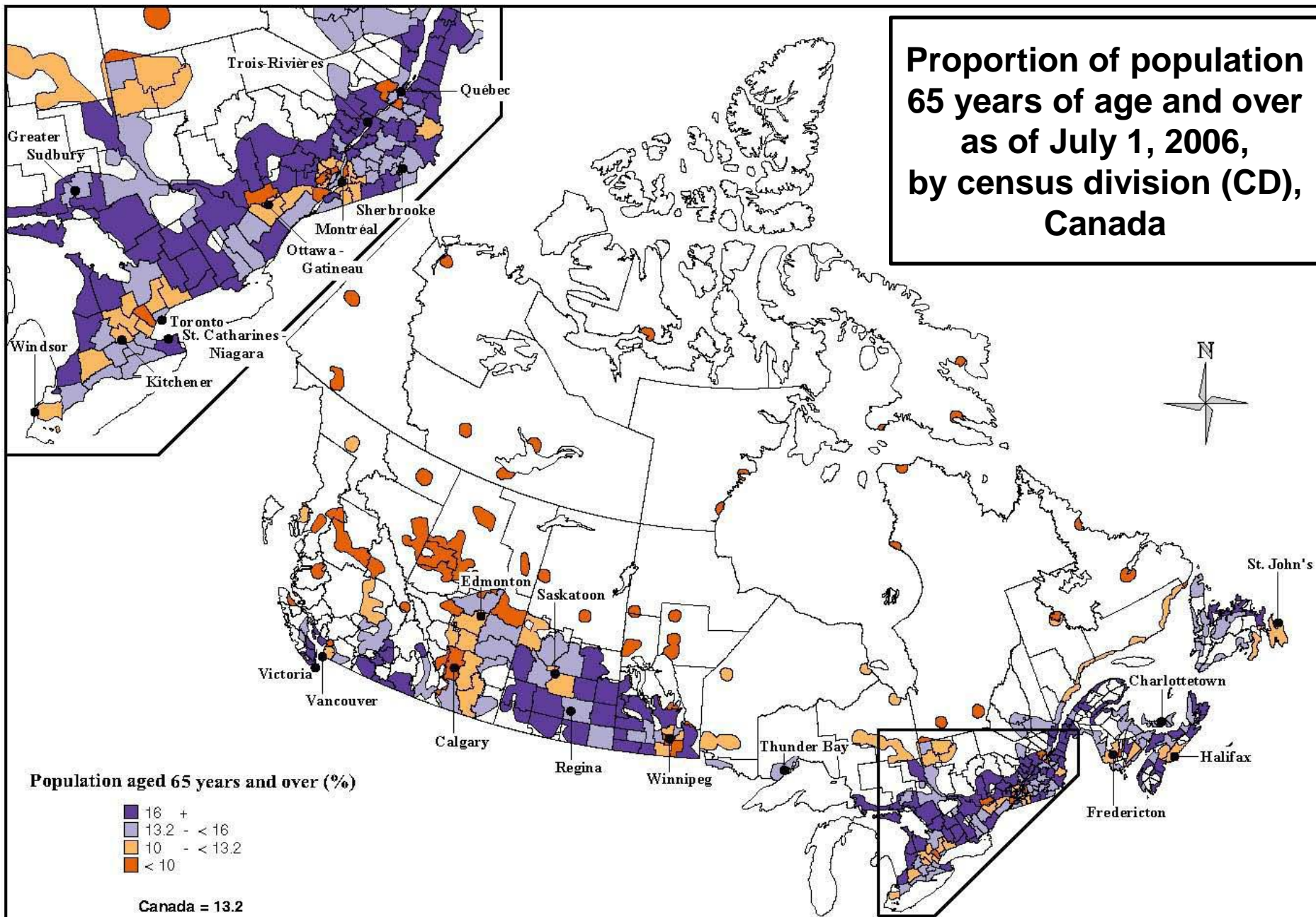
Population growth rates between July 1 (previous year) and June 30 (current year) by census division

Net internal migration rates between July 1 (previous year) and June 30 (current year) by census division

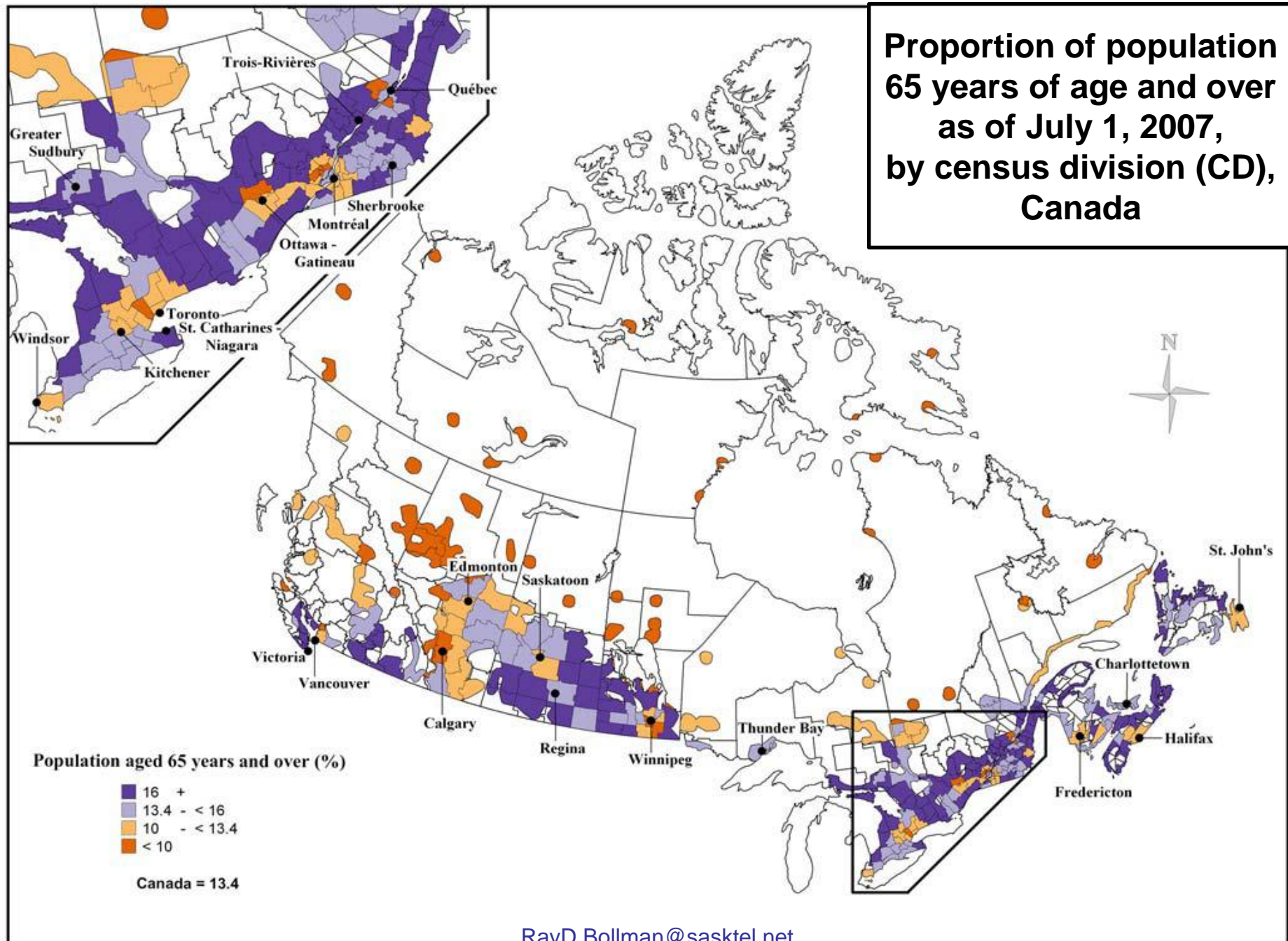
Median age as of July 1 by census division

Proportion of population 65 years of age and over as of July 1 by census division

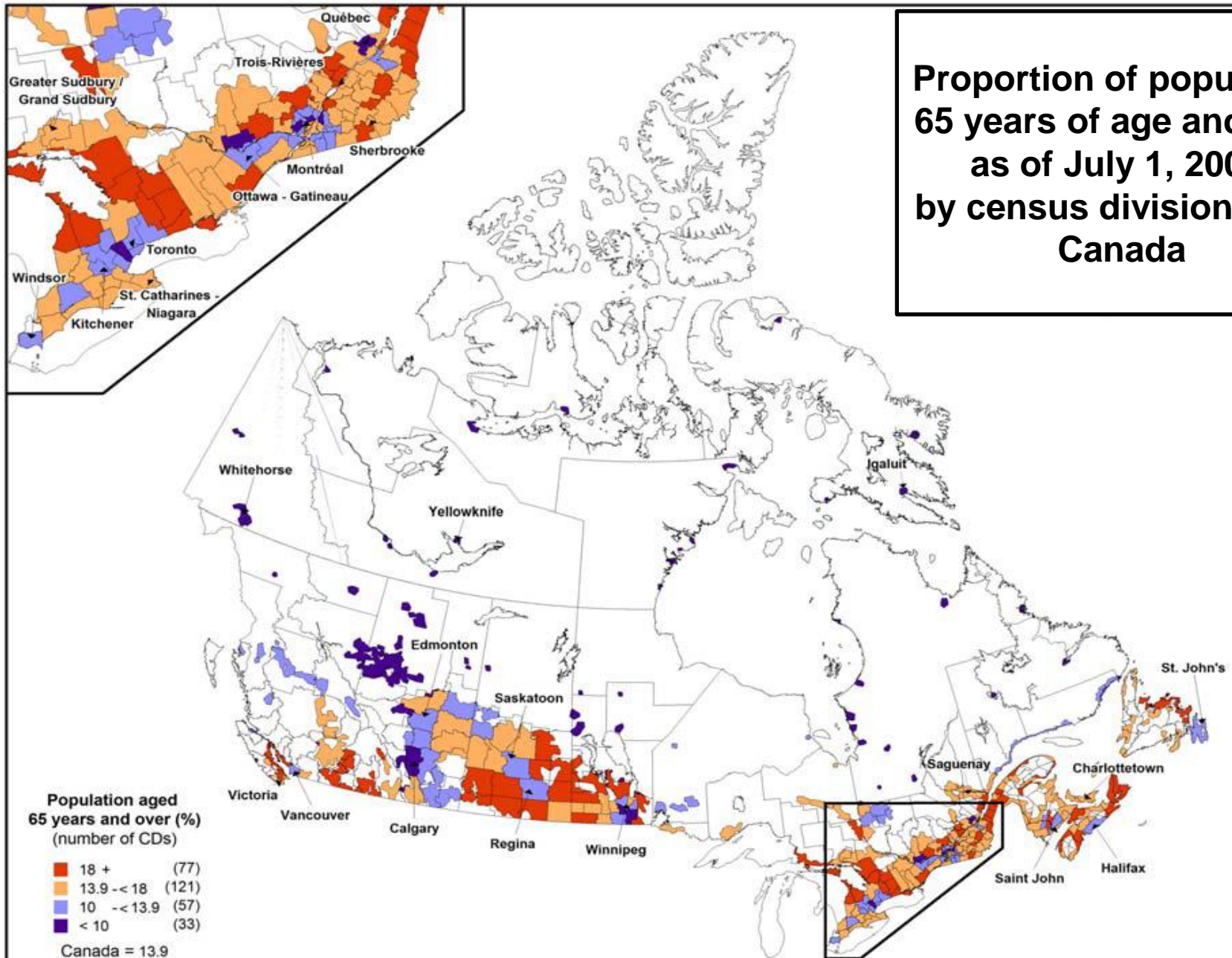
**Proportion of population
65 years of age and over
as of July 1, 2006,
by census division (CD),
Canada**



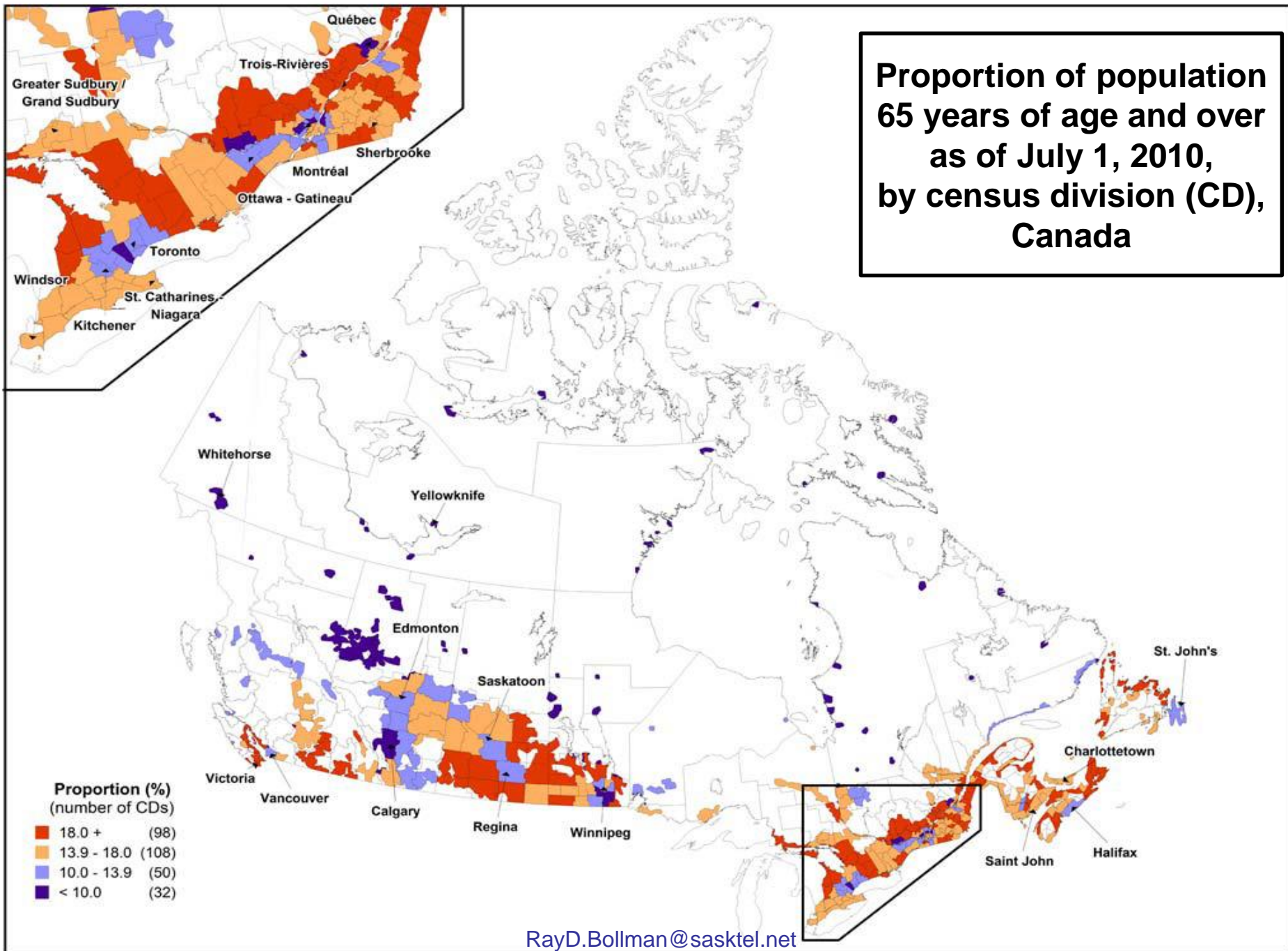
**Proportion of population
65 years of age and over
as of July 1, 2007,
by census division (CD),
Canada**



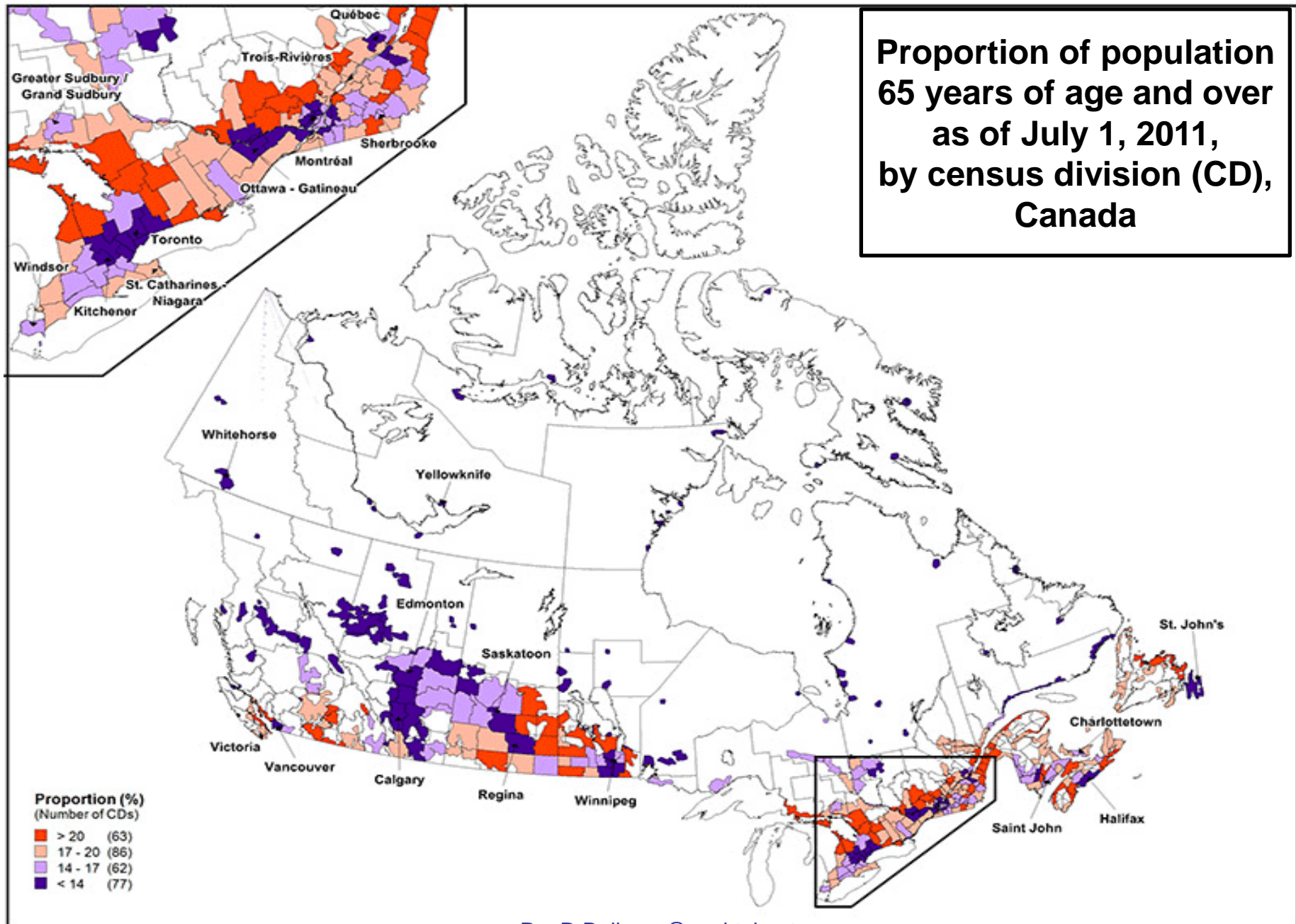
**Proportion of population
65 years of age and over
as of July 1, 2009,
by census division (CD),
Canada**



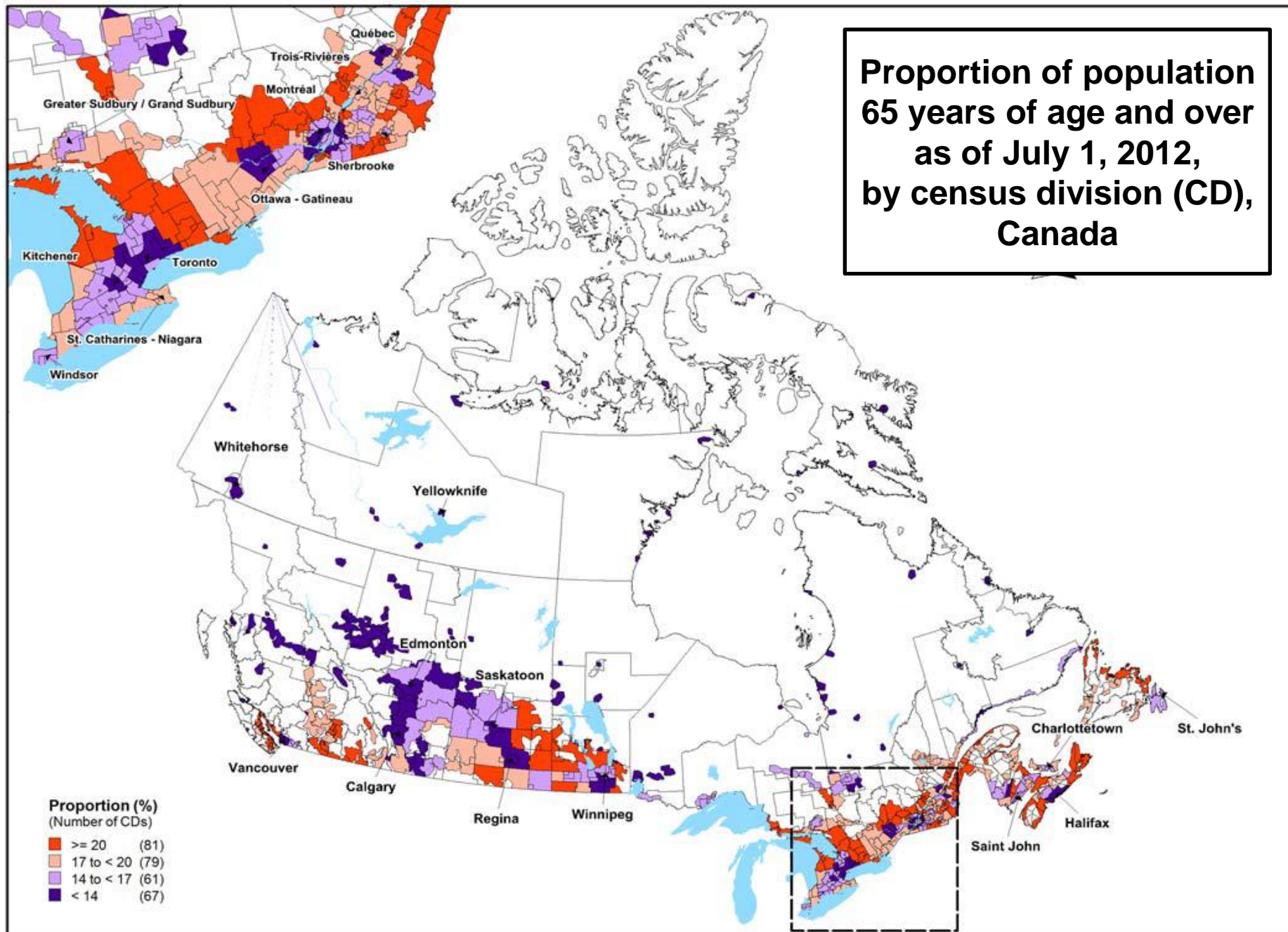
**Proportion of population
65 years of age and over
as of July 1, 2010,
by census division (CD),
Canada**



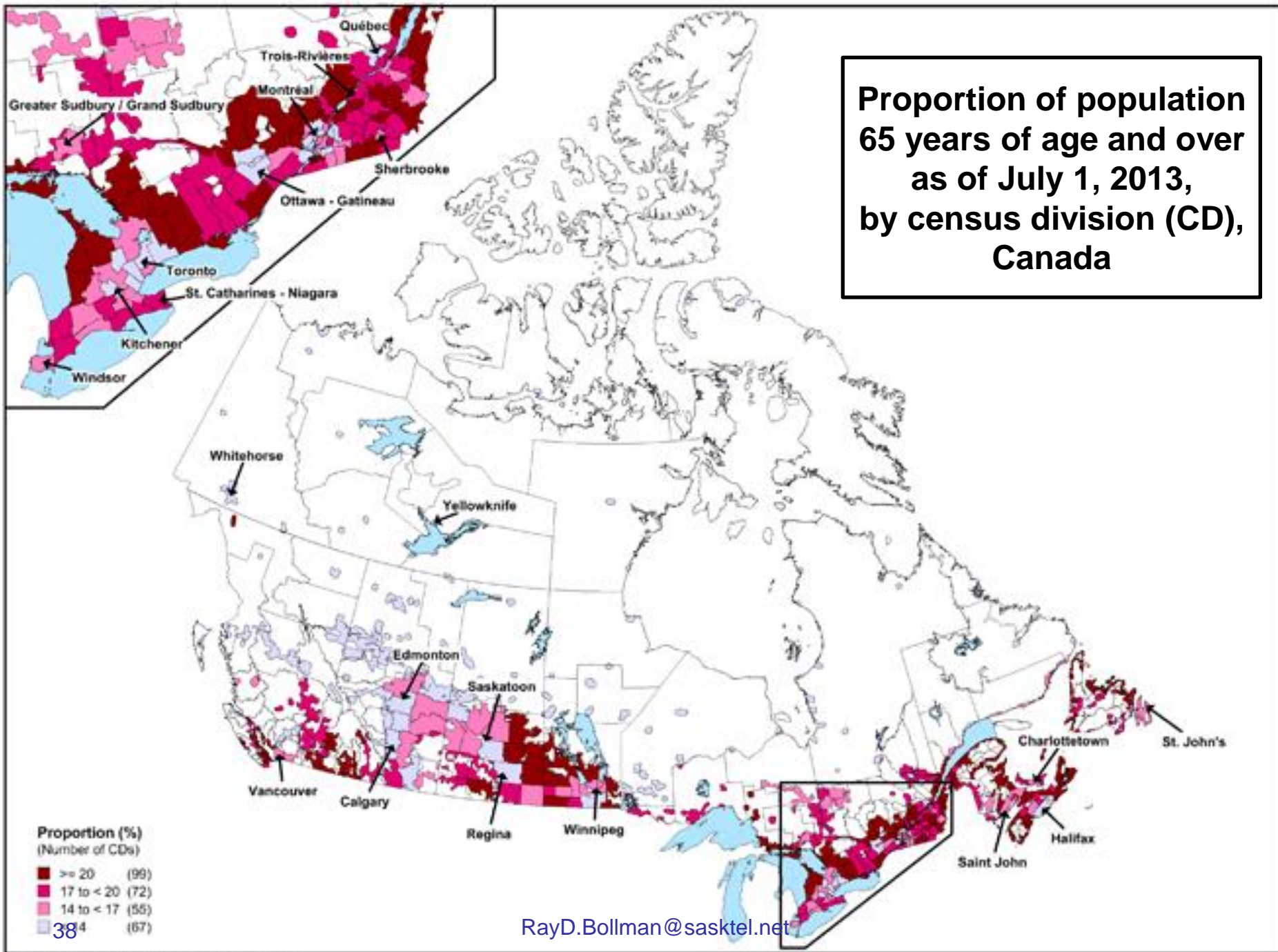
**Proportion of population
65 years of age and over
as of July 1, 2011,
by census division (CD),
Canada**



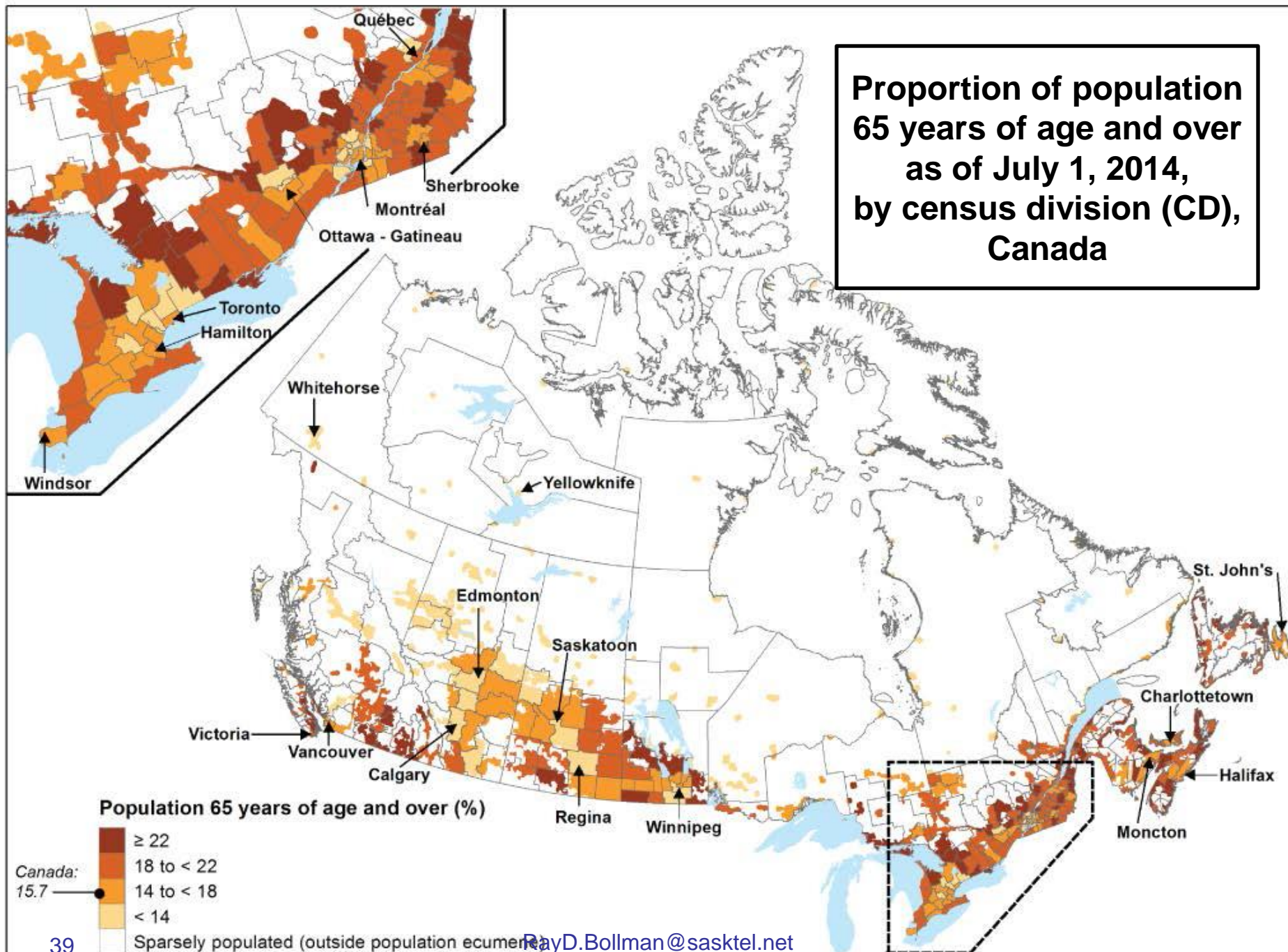
**Proportion of population
65 years of age and over
as of July 1, 2012,
by census division (CD),
Canada**



**Proportion of population
65 years of age and over
as of July 1, 2013,
by census division (CD),
Canada**



**Proportion of population
65 years of age and over
as of July 1, 2014,
by census division (CD),
Canada**



**Proportion of population
65 years of age and over
as of July 1, 2015,
by census division (CD),
Canada**

