

# **Charts:**

## **Non-Metro Number Employed and Employment Rates (i.e. percent employed) by Age**

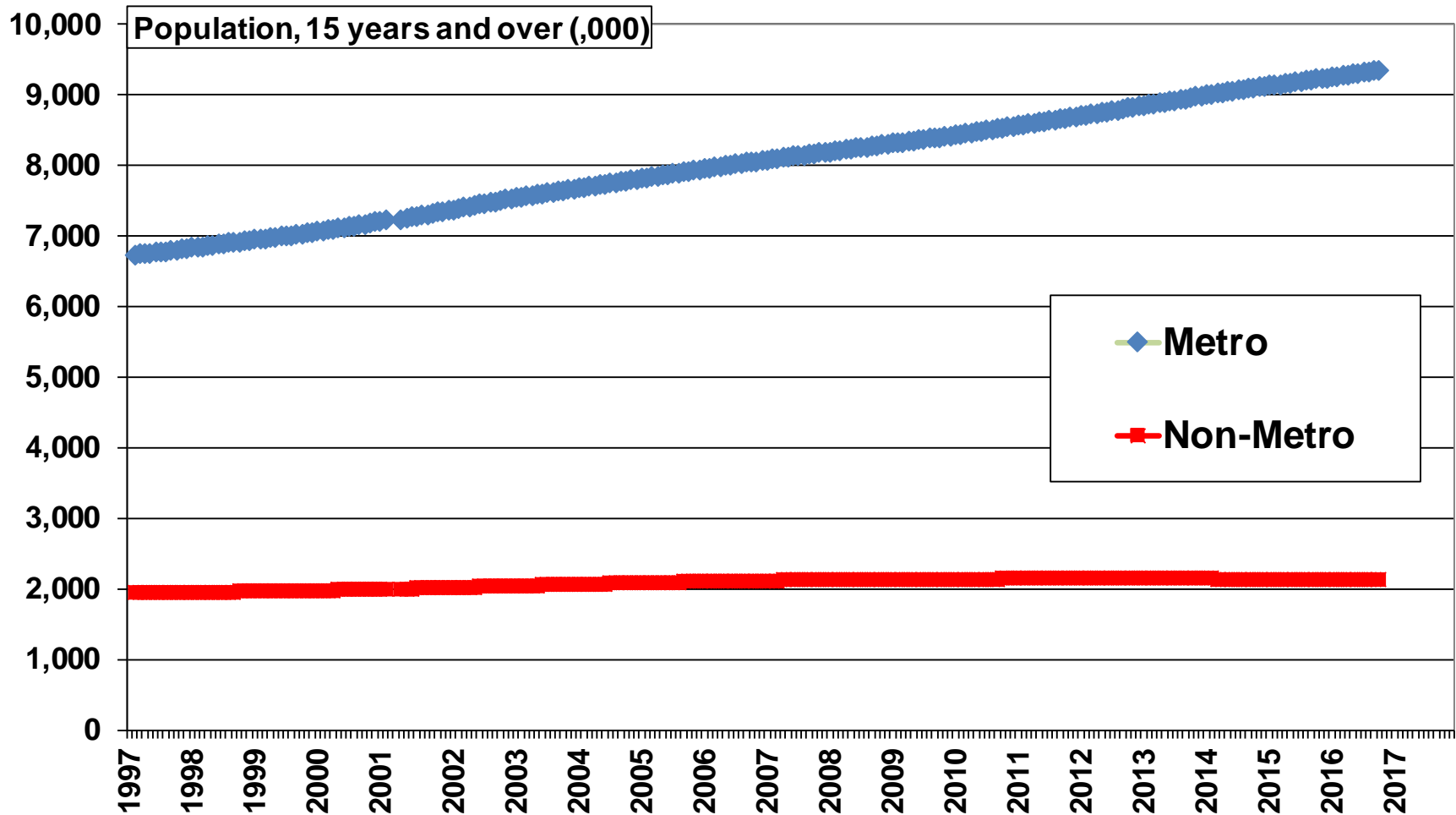
- **15 years and over**
- **15 to 24 years**
- **25 to 54 years (core-age workforce)**
- **55 to 64 years**
- **65 years and over**

# Charts:

## Non-Metro Number Employed and Employment Rates (i.e. percent employed) by Age

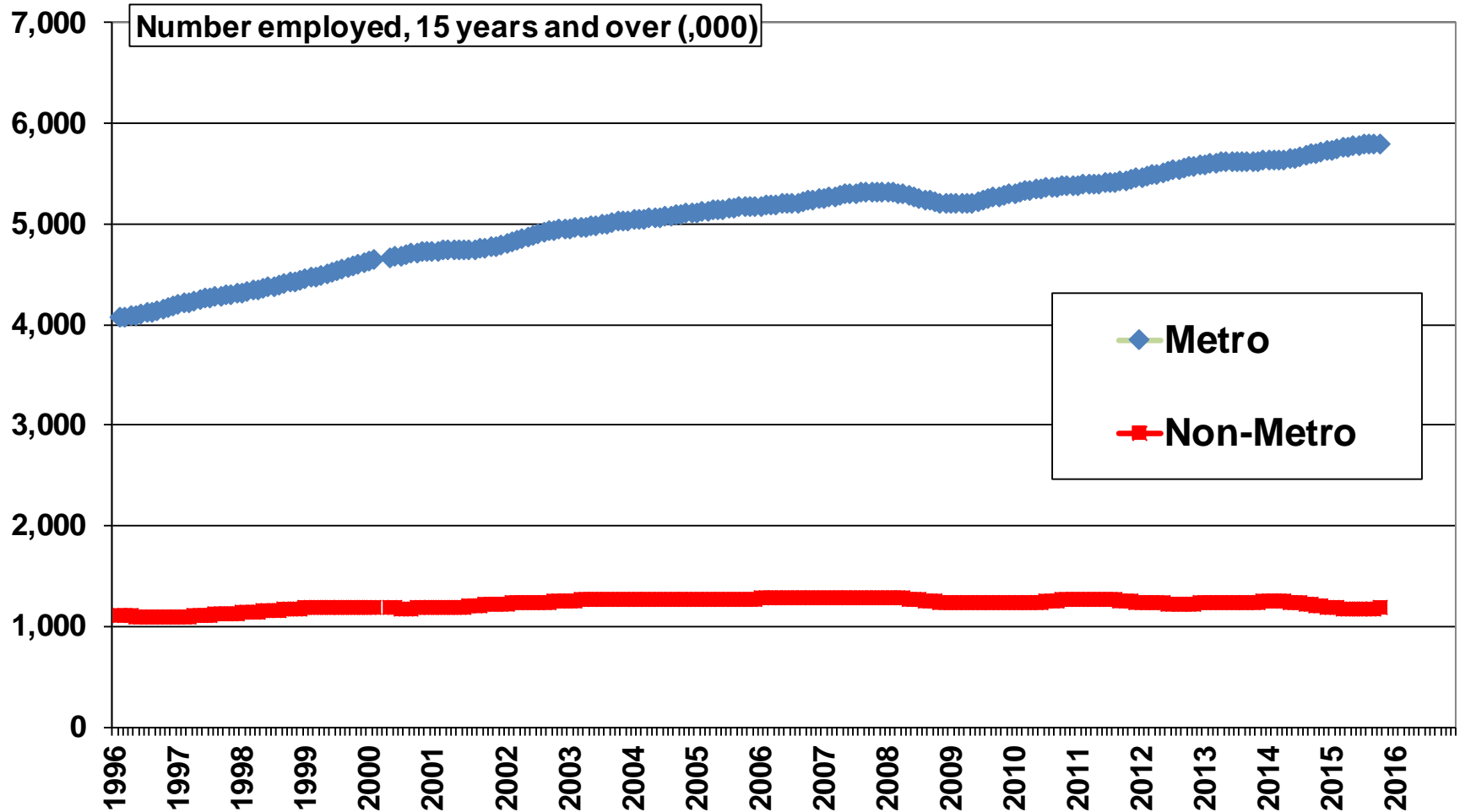
- **15 years and over**
- **15 to 24 years**
- **25 to 54 years (core-age workforce)**
- **55 to 64 years**
- **65 years and over**

# In non-metro Ontario, the population 15 years and over has been declining since 2012



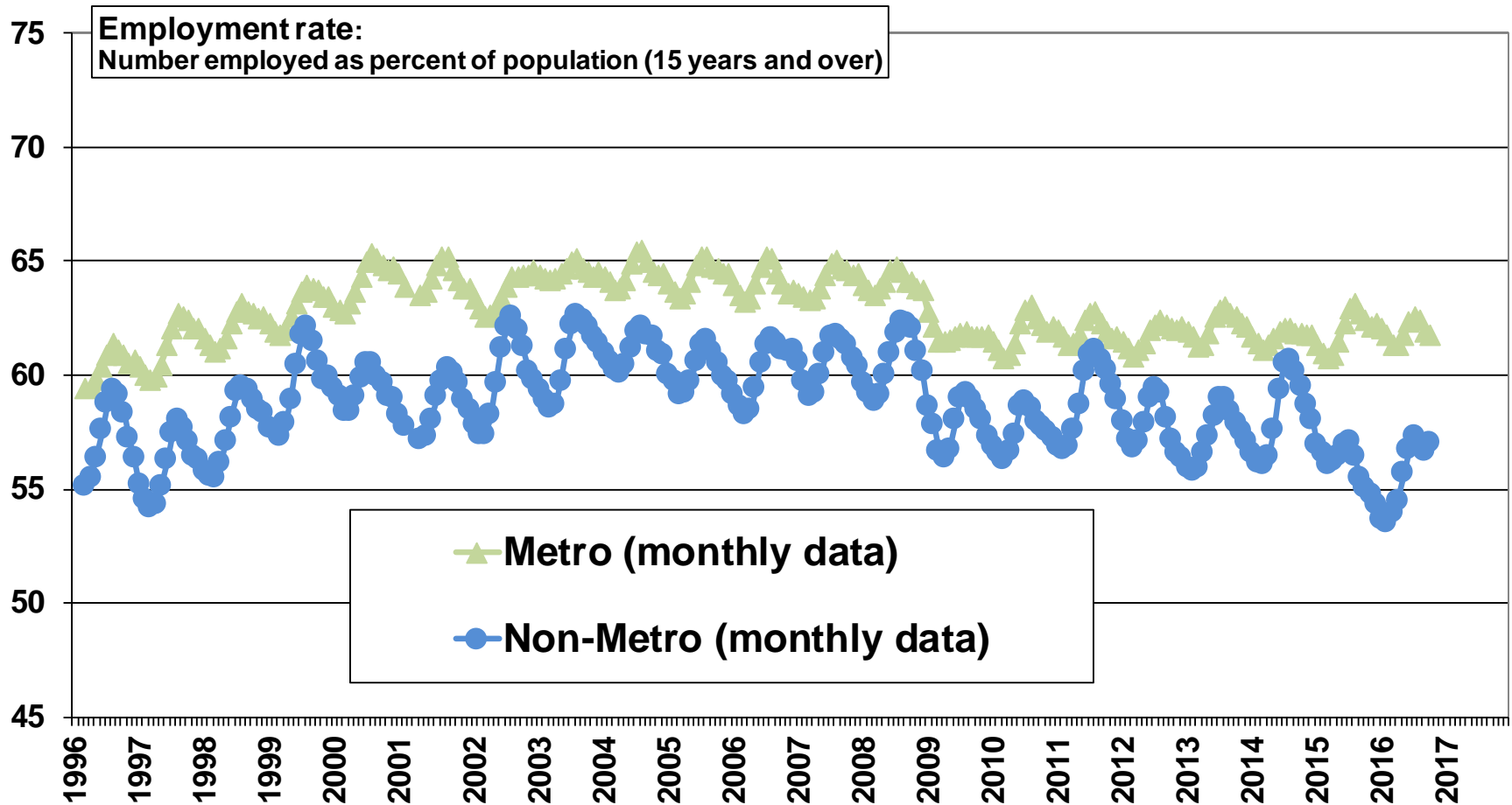
Source: Statistics Canada. Labour Force Survey, CANSIM Tables 282-0001 and 282-0128

# Employment in non-metro Ontario is continuing a slow decline from the peak in the fall of 2008



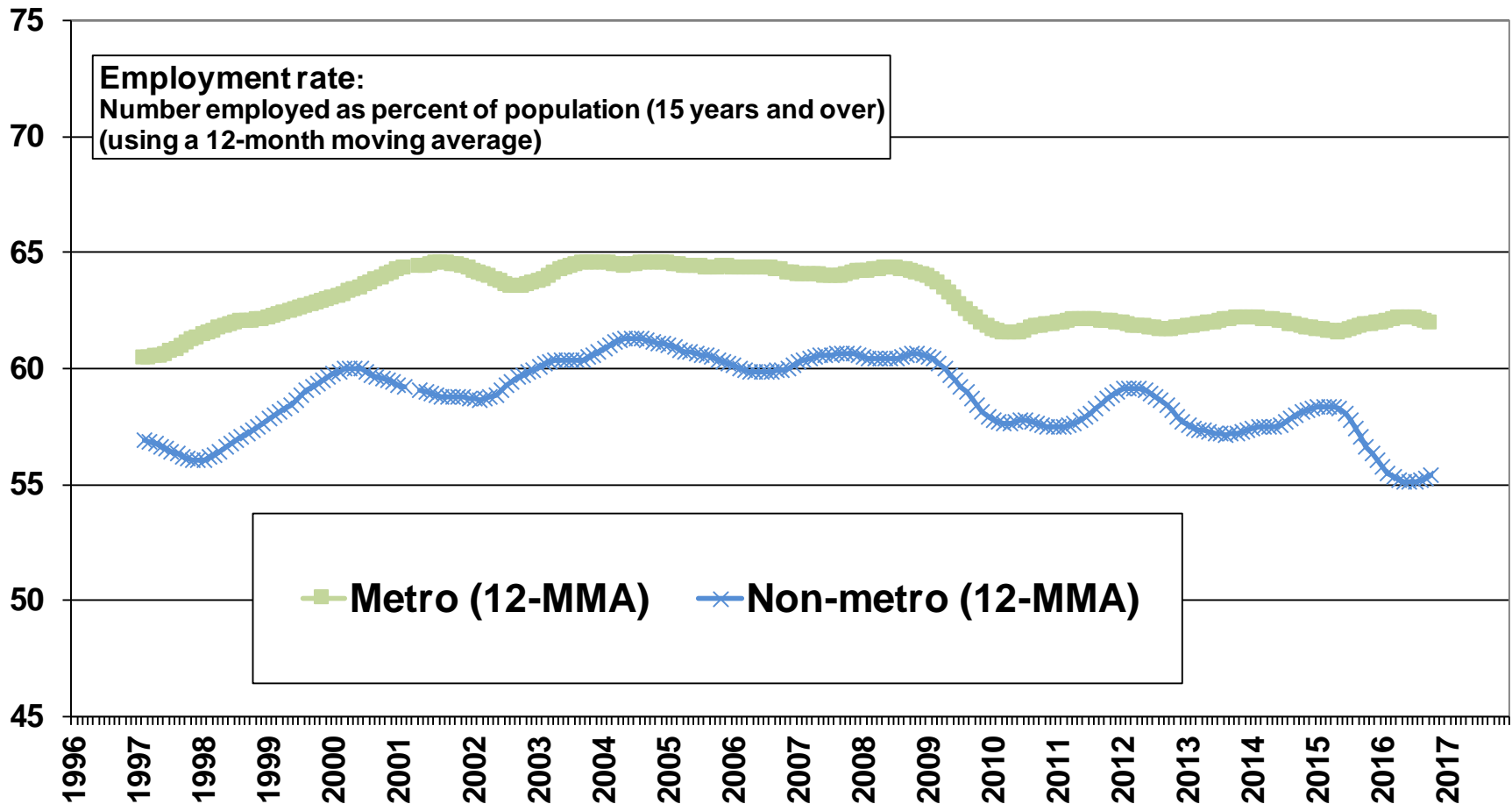
Source: Statistics Canada. Labour Force Survey, CANSIM Tables 282-0001 and 282-0128

# Ontario employment rates: Non-metro is lower and neither metro nor non-metro has recovered from the 2009 recession



Source: Statistics Canada. Labour Force Survey, CANSIM Tables 282-0001 and 282-0128

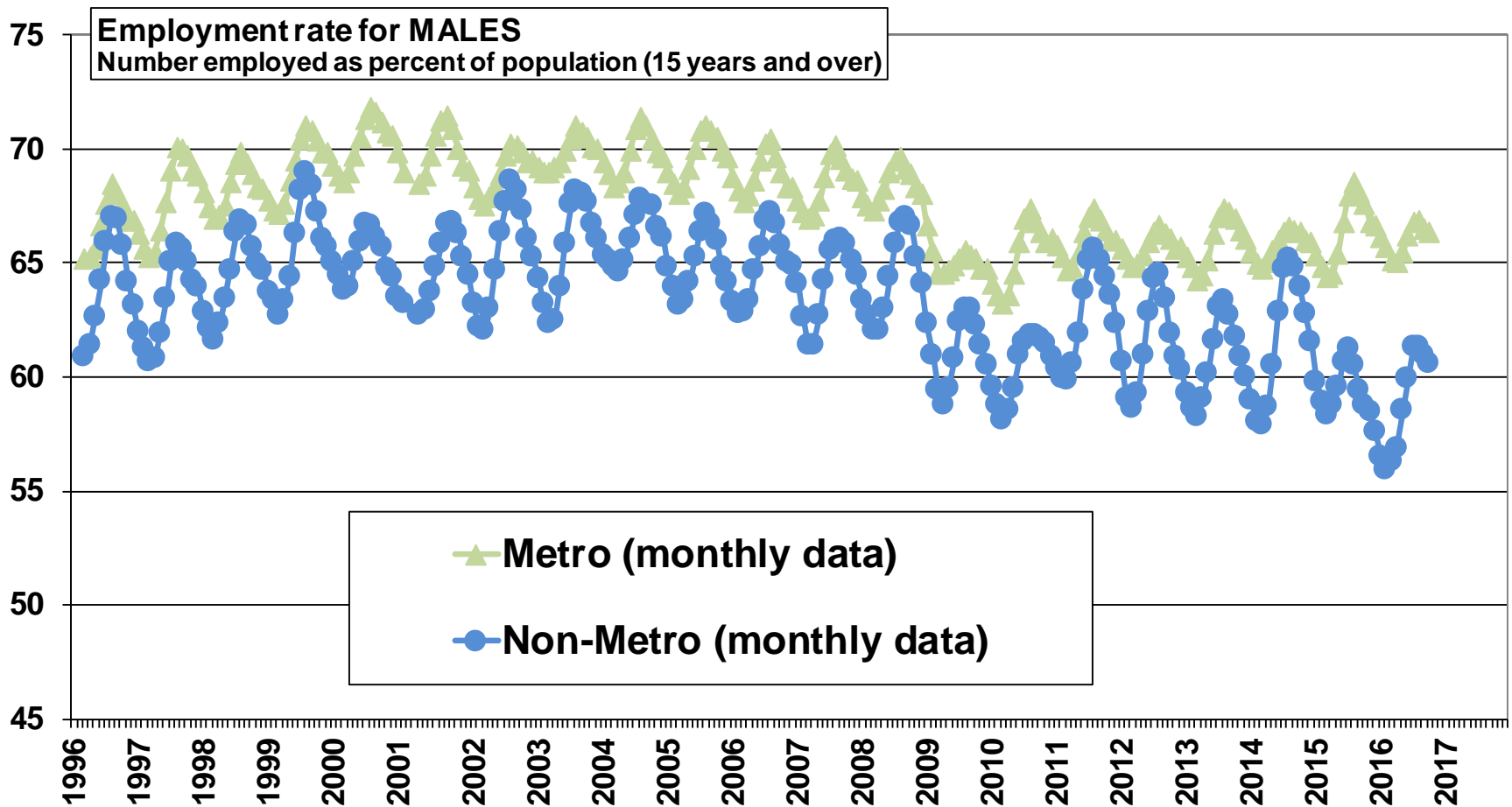
# Ontario employment rates: in the average month, non-metro is lower than metro and in both types of areas, employment rates are lower than in the 2000s



Source: Statistics Canada. Labour Force Survey, CANSIM Tables 282-0001 and 282-0128.

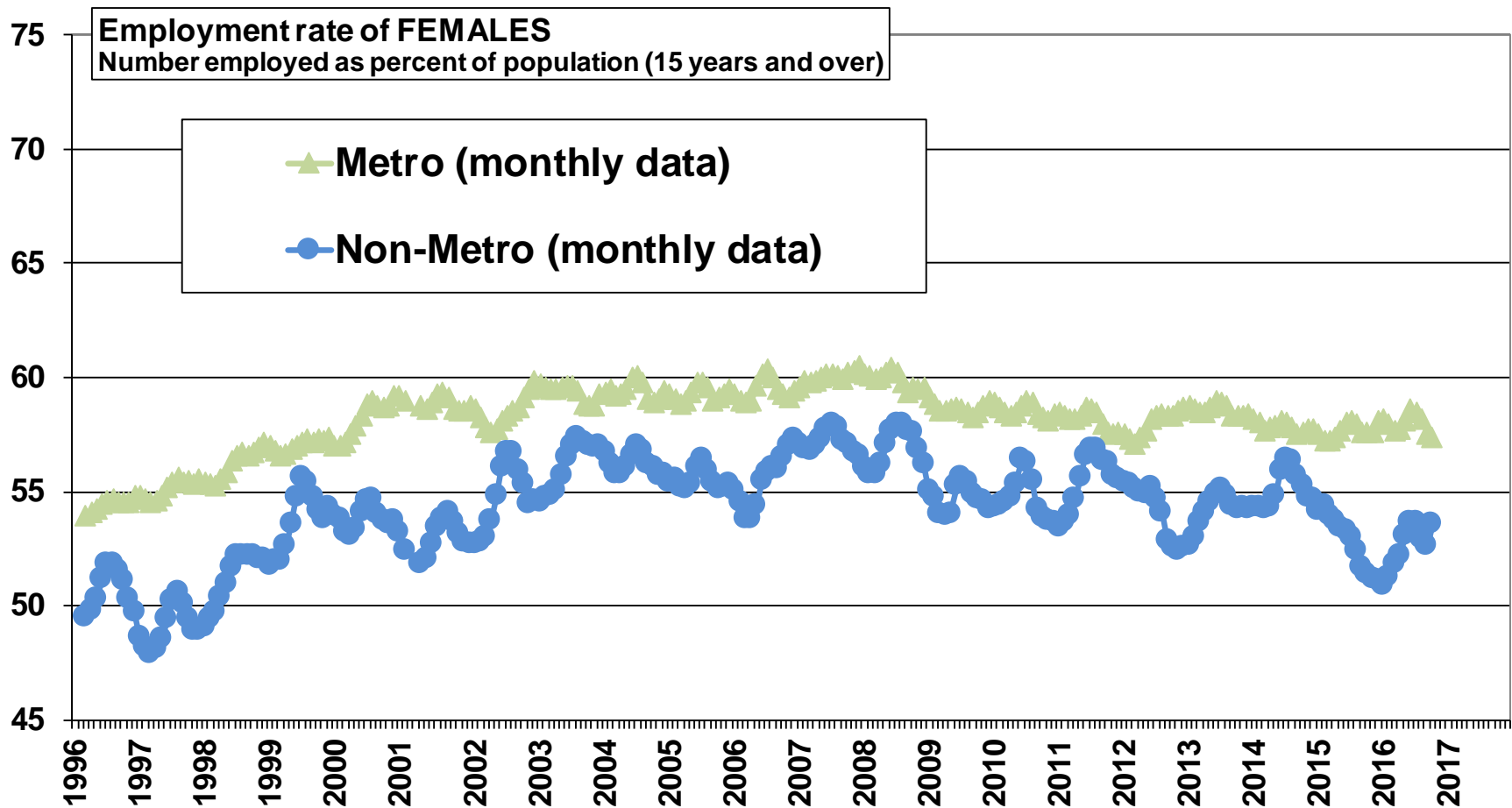
# Ontario MALE employment rates:

Non-metro is lower (but approaches metro in peak months) and neither metro nor non-metro has recovered from the 2009 recession



Source: Statistics Canada. Labour Force Survey, CANSIM Tables 026-0001 and 282-0109.

# Ontario FEMALE employment rates: Non-metro is lower and neither metro nor non-metro has recovered from the 2009 recession



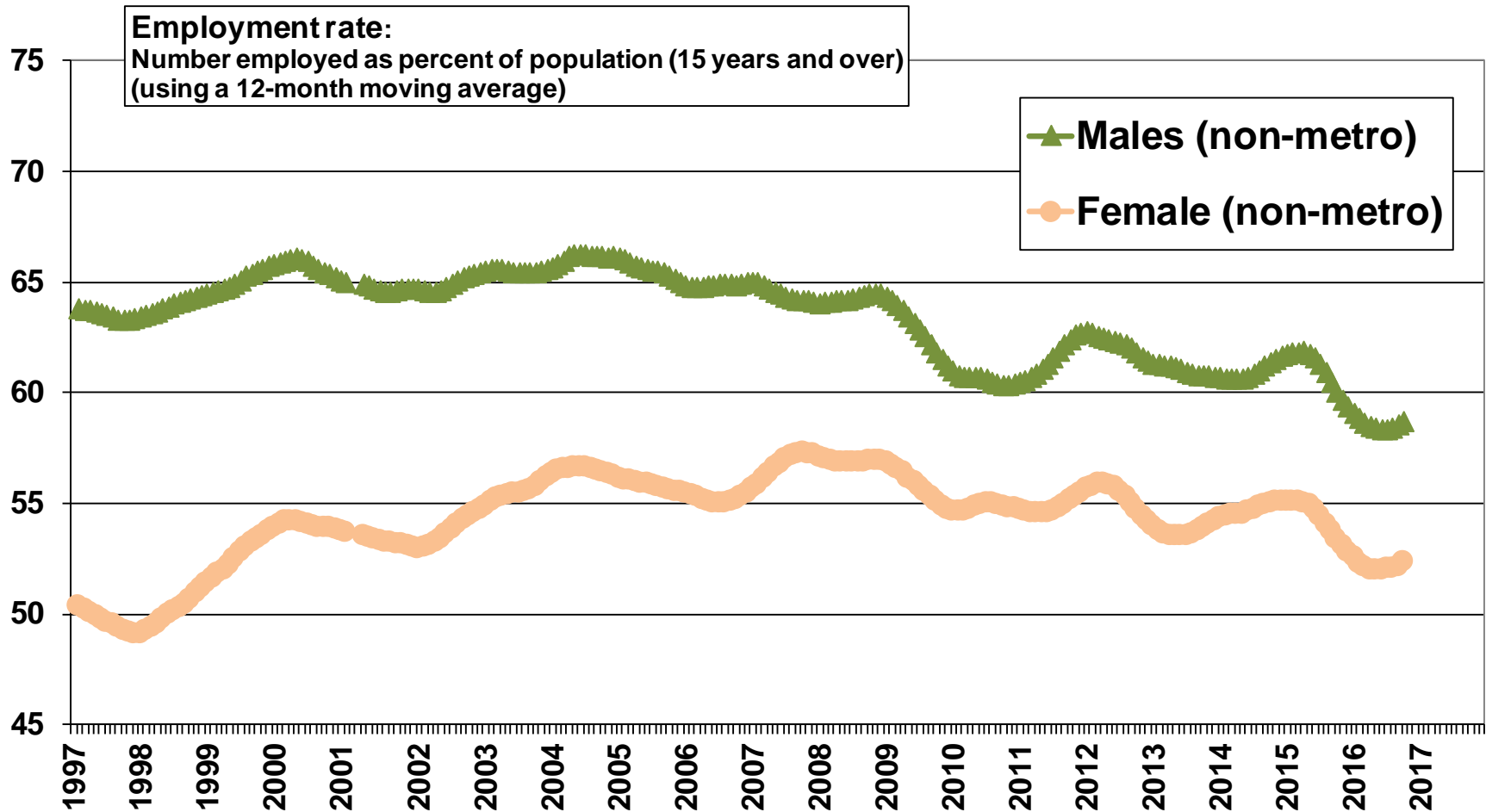
Source: Statistics Canada. Labour Force Survey, CANSIM Tables 282-0001 and 282-0109.



# Ontario non-metro employment rates:

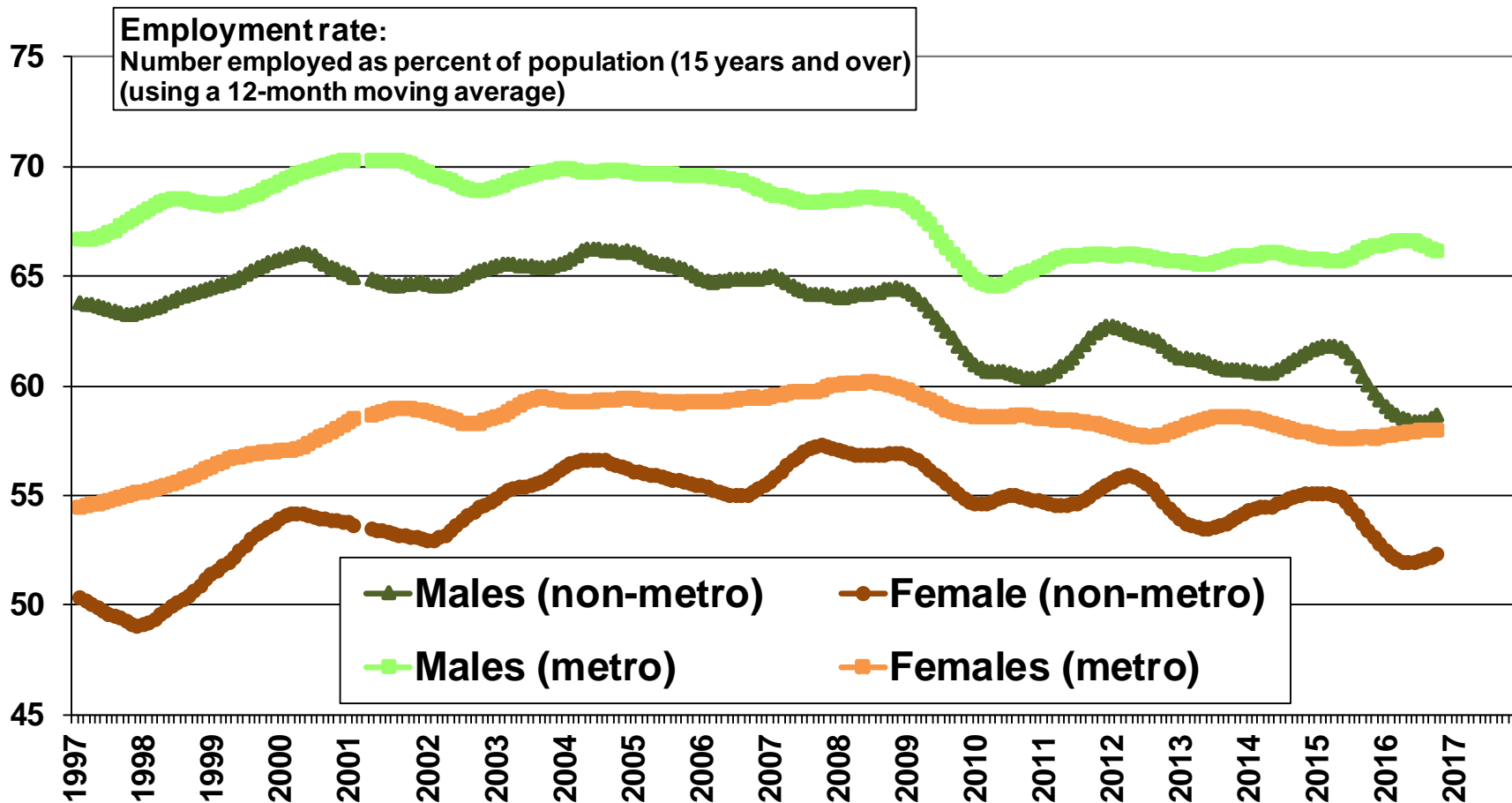
**Males:** Peaked at 66% in May, 2000 and declined to 58.5% in October, 2016

**Females:** Peaked at 57.4% in October, 2007 and declined to 52.3% in October, 2016



Source: Statistics Canada. Labour Force Survey, CANSIM Tables 282-0001 and 282-0128.

# Ontario employment rates: Non-metro males and females are below metro



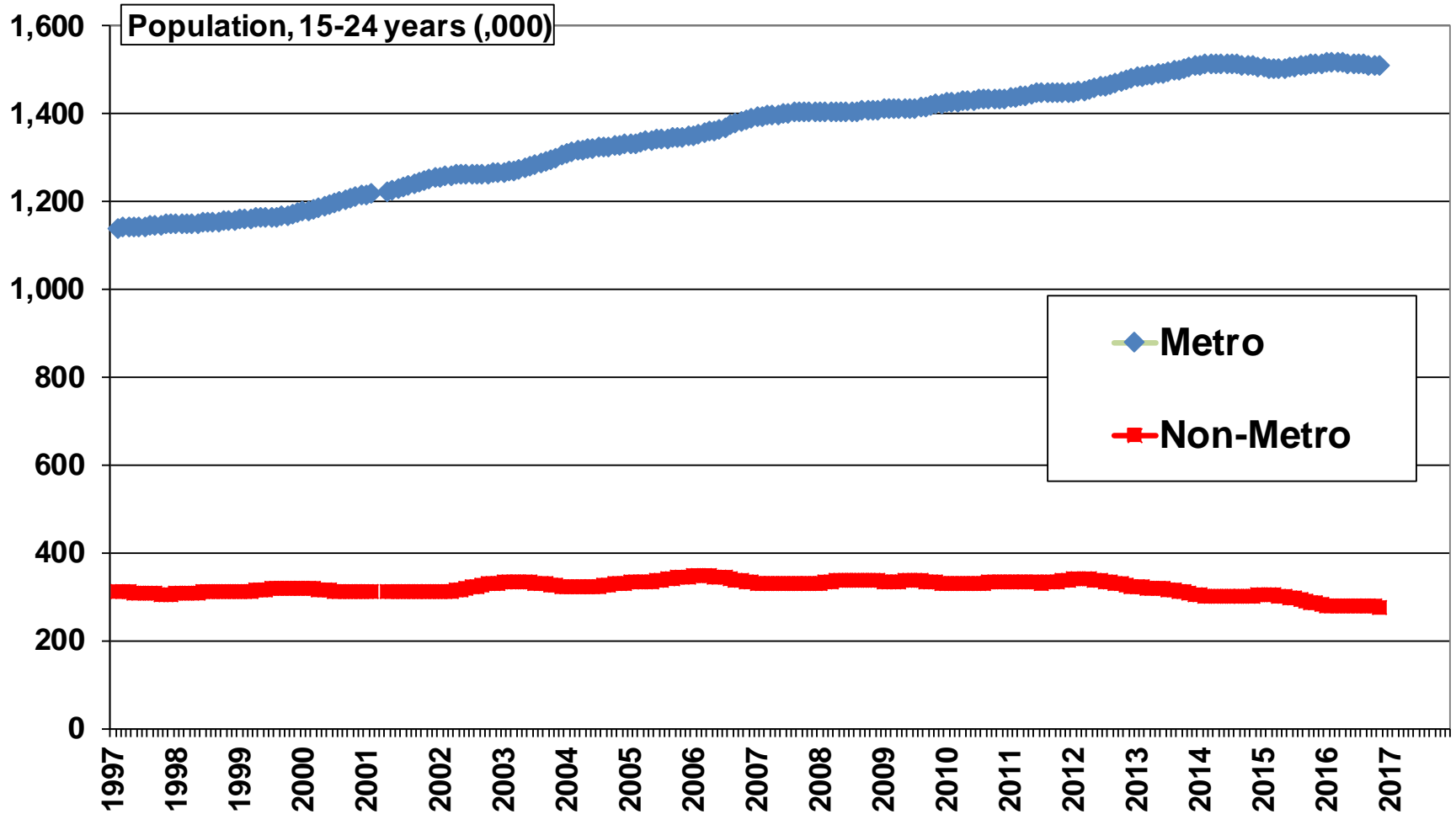
Source: Statistics Canada. Labour Force Survey, CANSIM Tables 282-0001 and 282-0128.

## Charts:

# Non-Metro Number Employed and Employment Rates (i.e. percent employed) by Age

- 15 years and over
- **15 to 24 years**
- 25 to 54 years (core-age workforce)
- 55 to 64 years
- 65 years and over

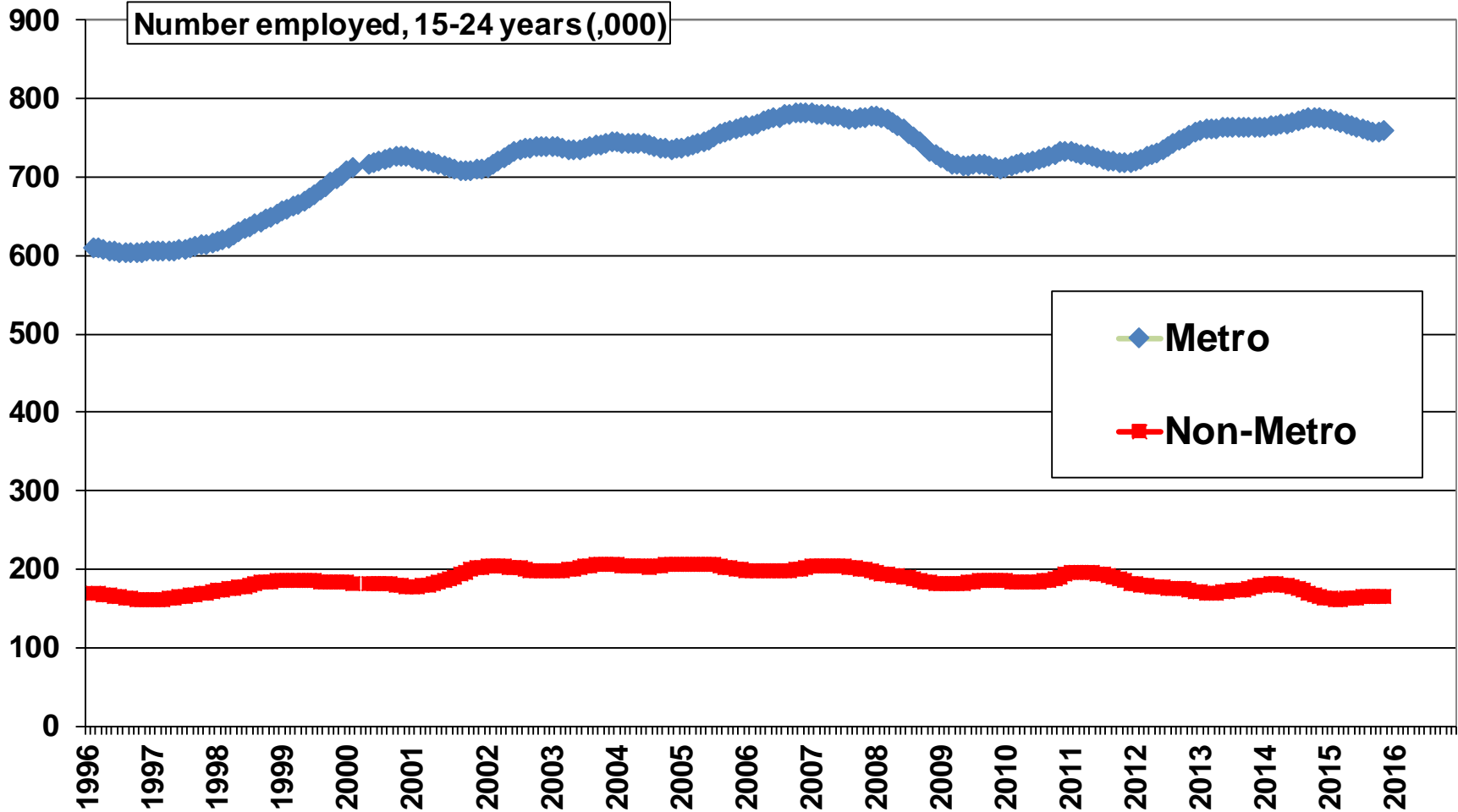
# In non-metro Ontario, the population of youth, 15-24 years, has been declining since early 2012



Note: Students are included.

Source: Statistics Canada. Labour Force Survey, CANSIM Tables 282-0001 and 282-0128

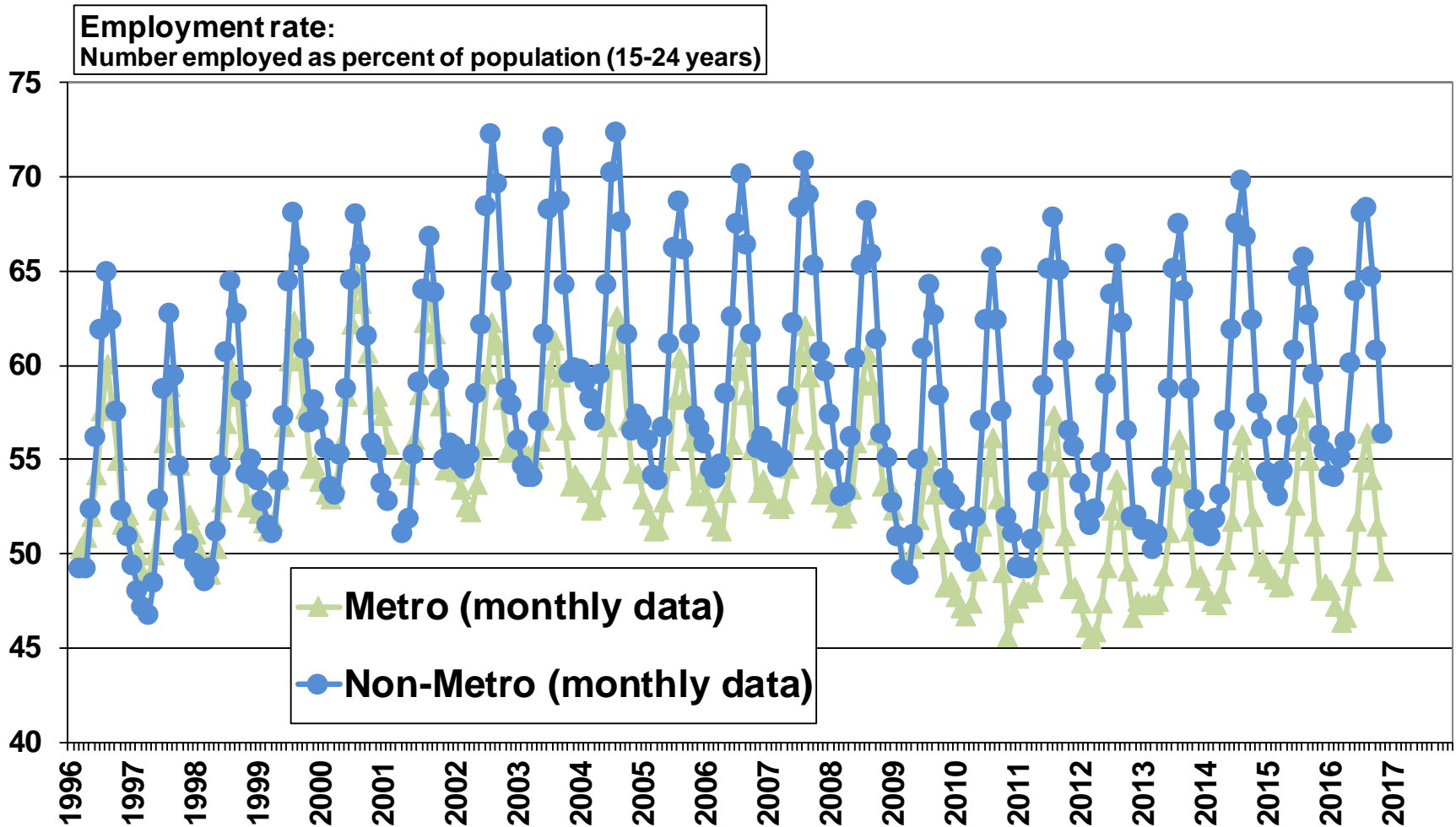
# Employment of youth, 15-24 years, in non-metro Ontario has been declining since the peak of 207 thousand in December 2005



Note: Students are included.

Source: Statistics Canada. Labour Force Survey, CANSIM Tables 282-0001 and 282-0128

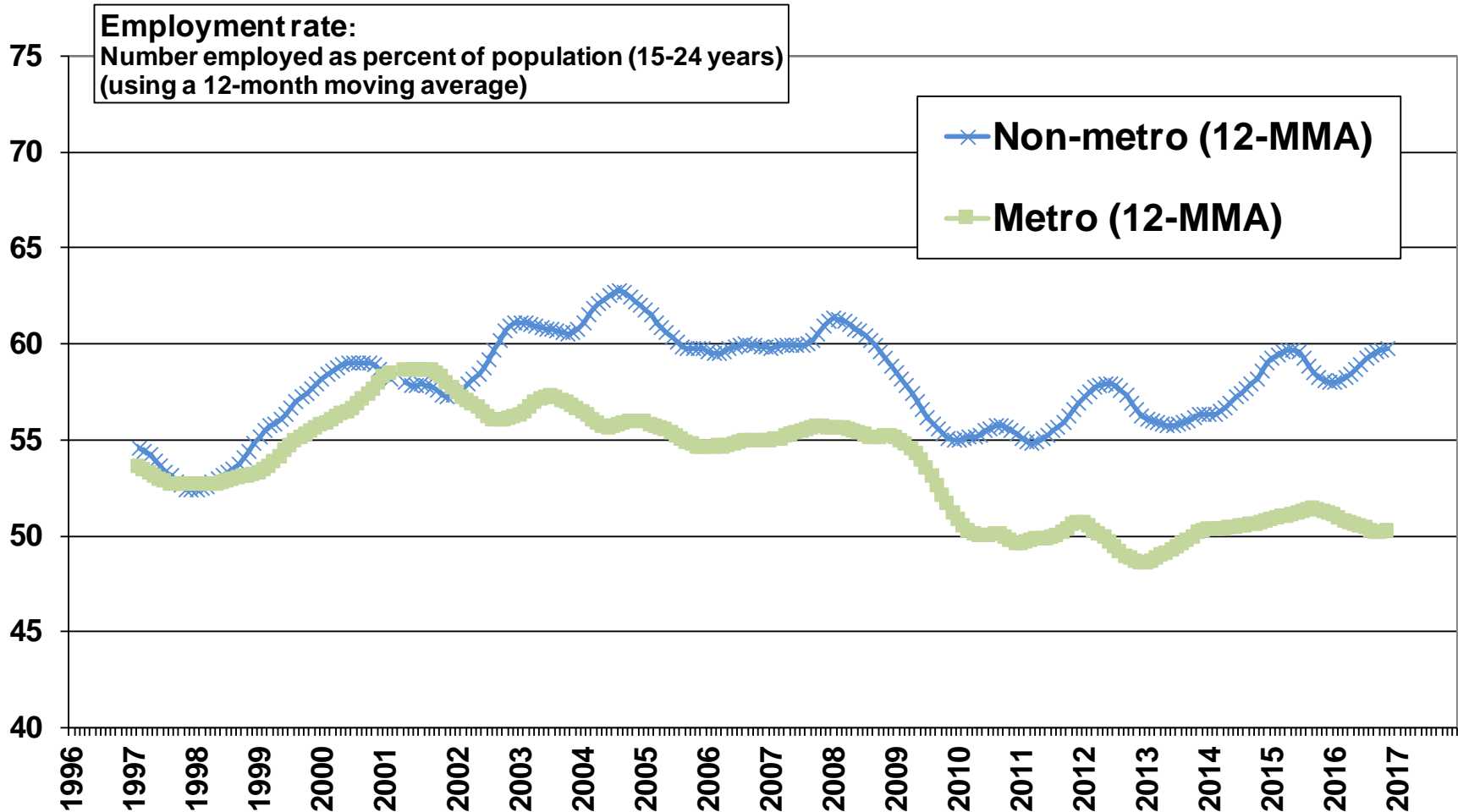
# For youth, 15-24 years, employment rates in non-metro areas are generally higher (and more variable within each year), Ontario



Note: Students are included.

Source: Statistics Canada. Labour Force Survey, CANSIM Tables 282-0001 and 282-0128

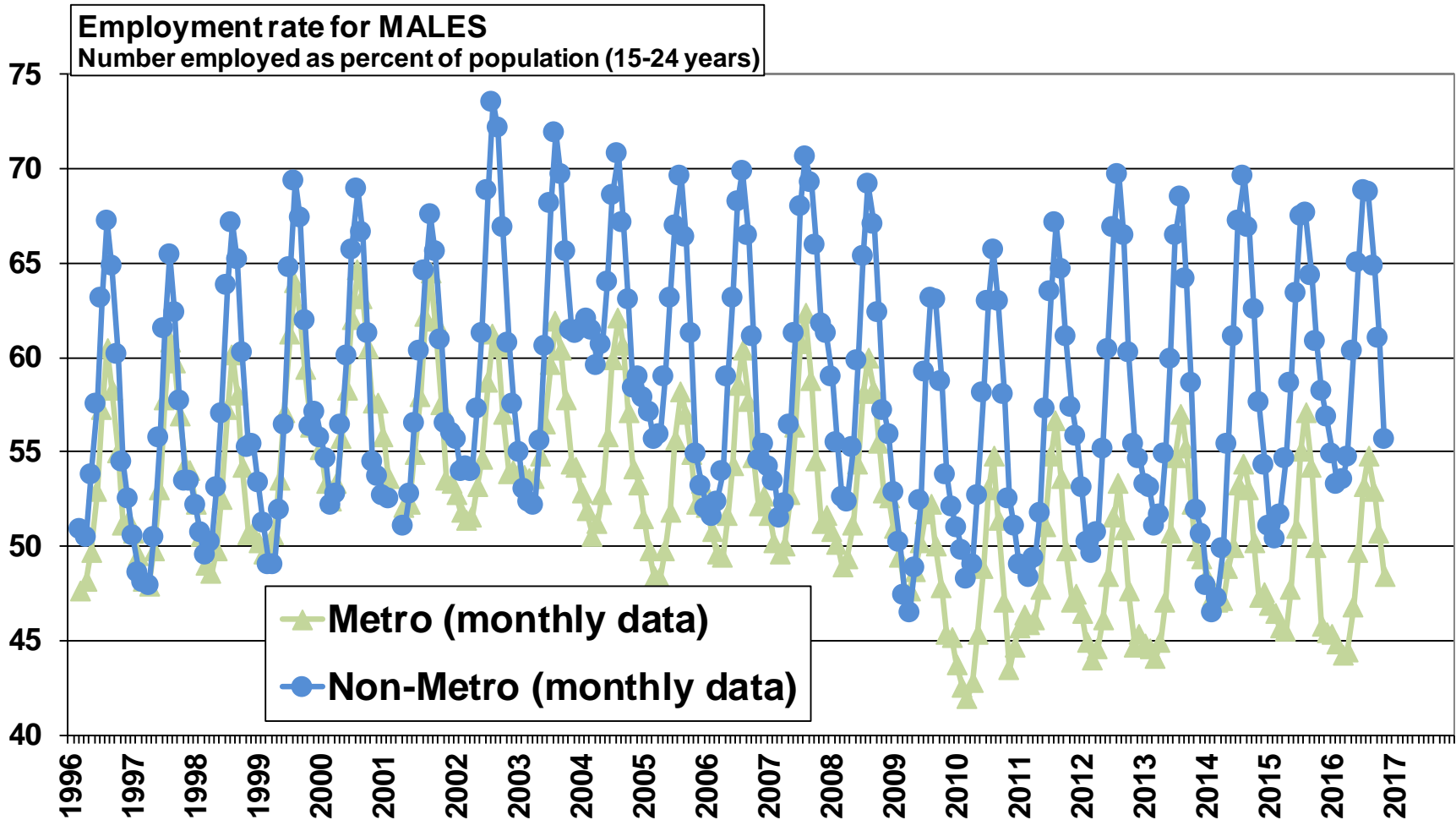
# For youth, 15 - 24 years, non-metro employment rates in the average month have been higher than in metro since 2002



Note: Students are included.

Source: Statistics Canada. Labour Force Survey, CANSIM Tables 282-0001 and 282-0128.

# For MALES, 15-24 years, employment rates in non-metro areas are generally higher than in metro areas

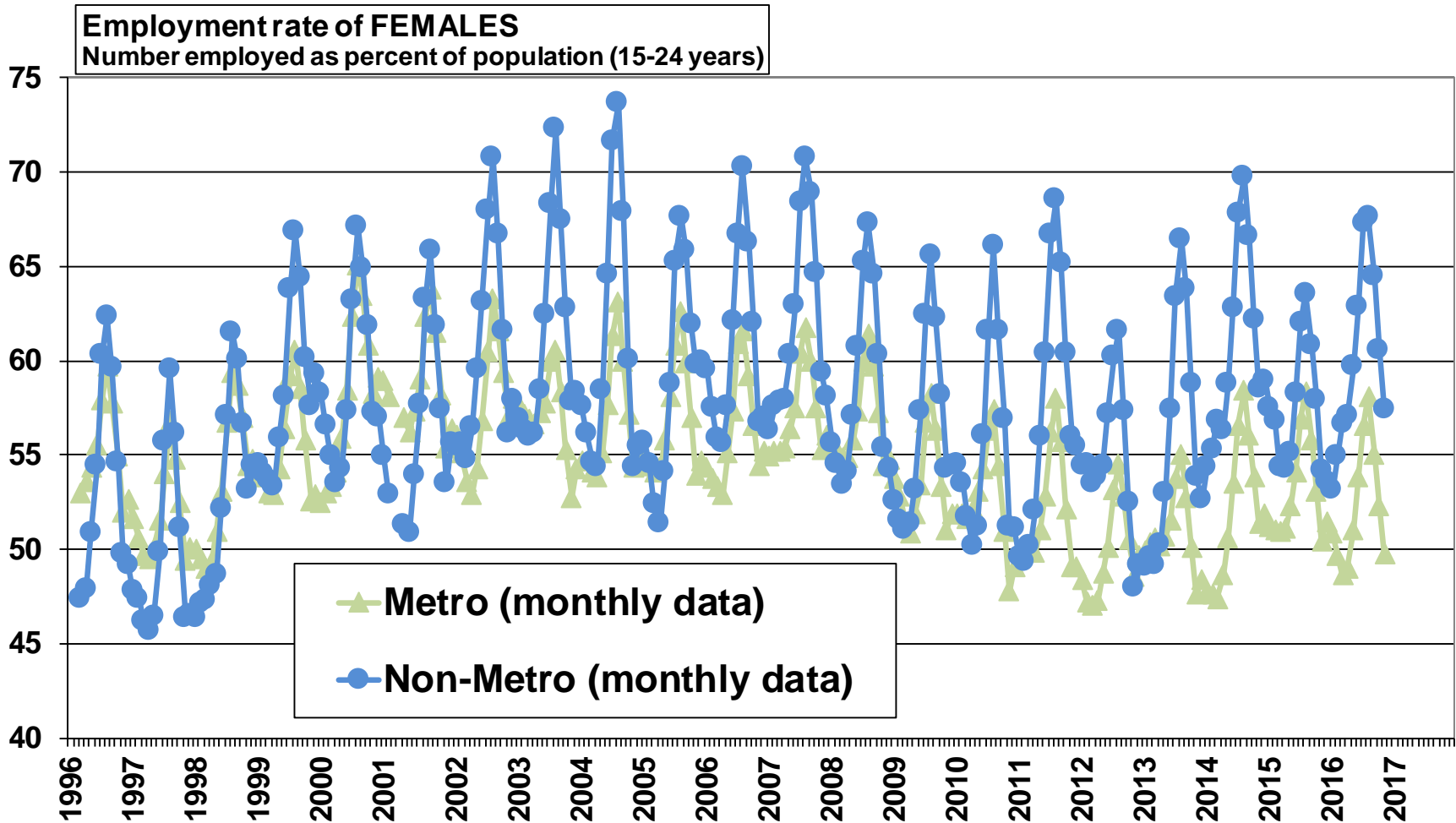


Note: Students are included.

Source: Statistics Canada. Labour Force Survey, CANSIM Tables 026-0001 and 282-0109.



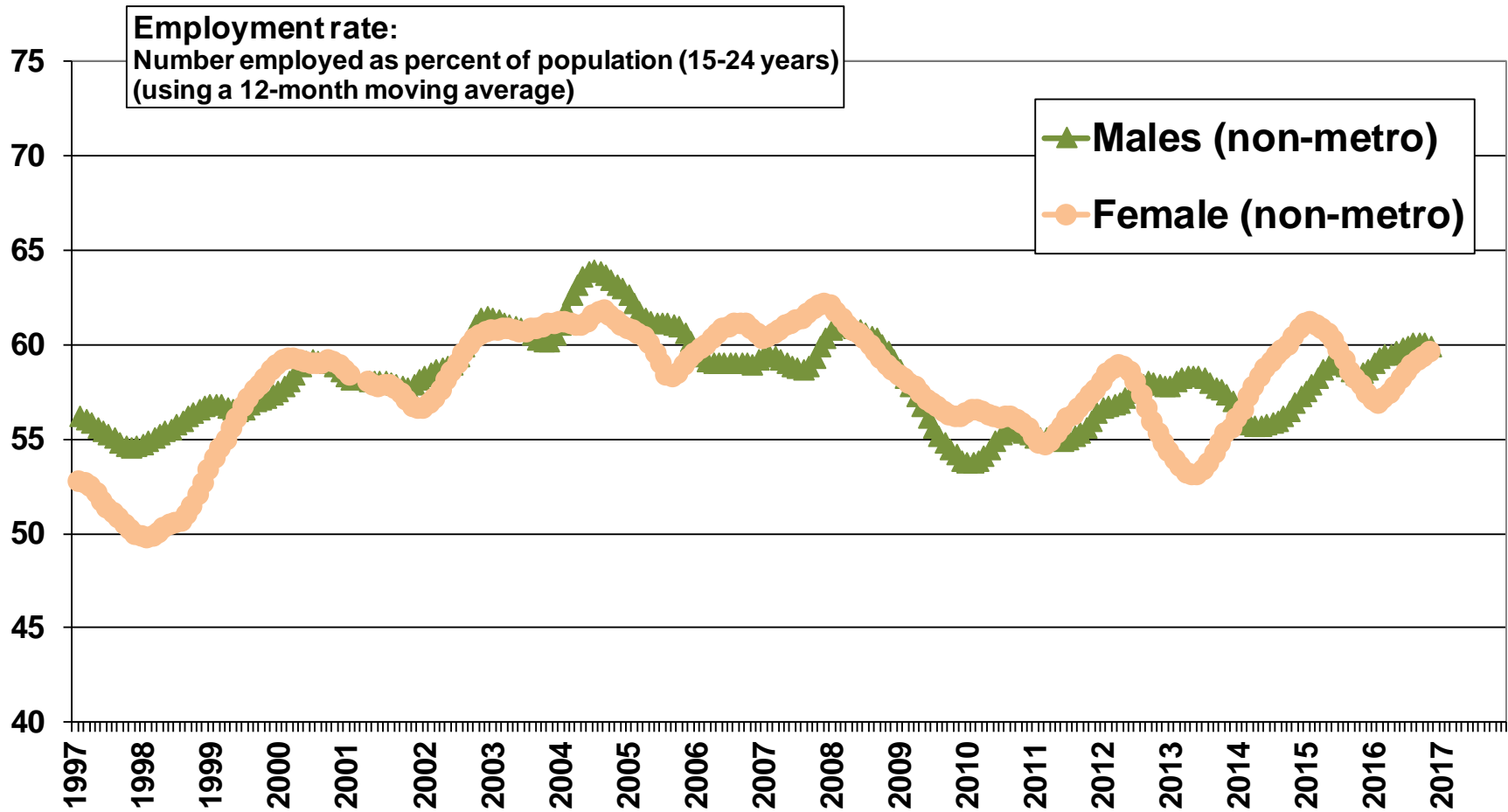
# For FEMALES, 15-24 years, employment rates in non-metro areas are generally higher than in metro areas



Note: Students are included.

Source: Statistics Canada. Labour Force Survey, CANSIM Tables 282-0001 and 282-0109.

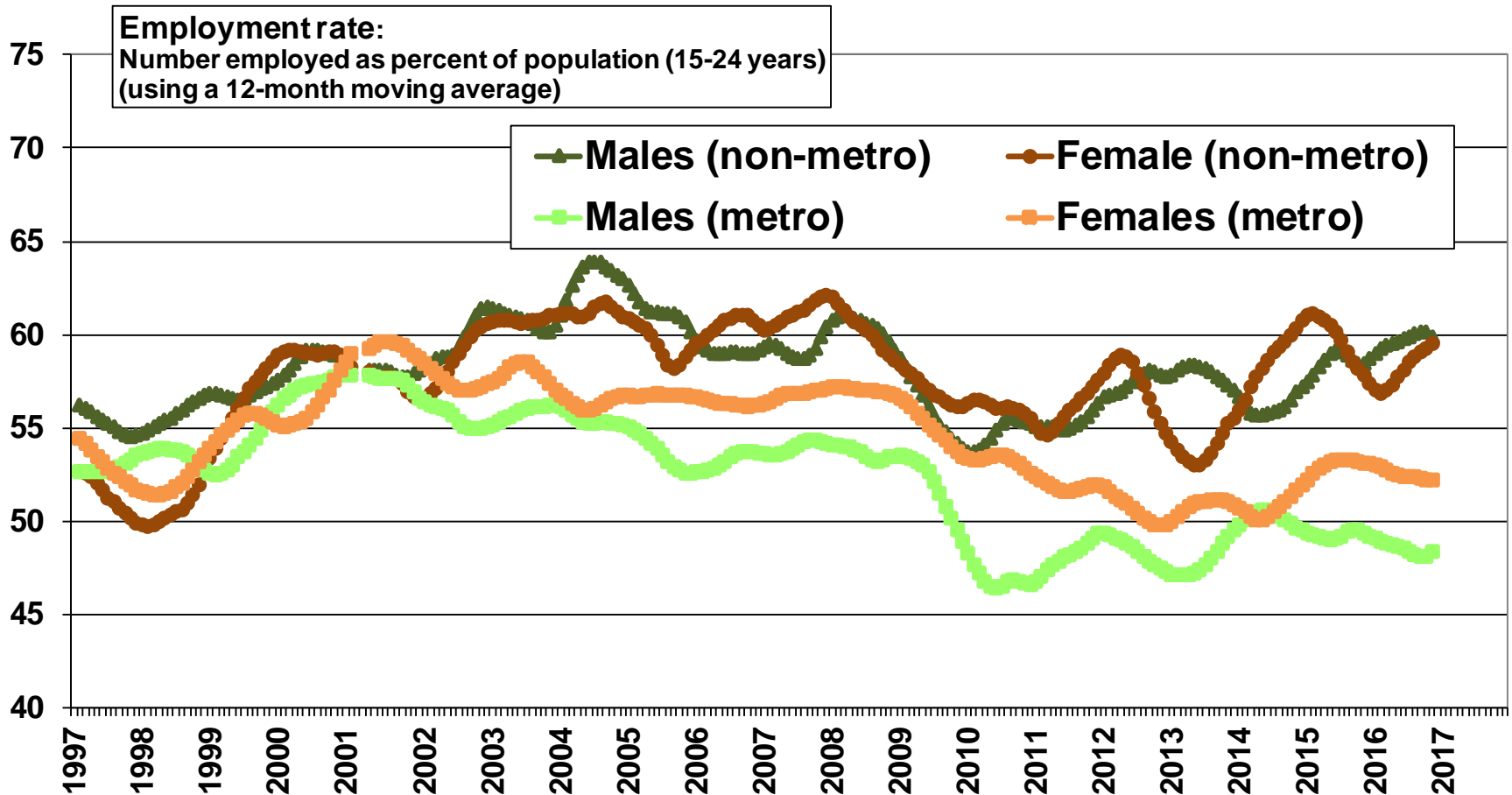
# Within non-metro Ontario, male and female youth, 15-24 years, have similar employment rates



Note: Students are included.

Source: Statistics Canada. Labour Force Survey, CANSIM Tables 282-0001 and 282-0128.

# For youth, 15-24 years, in non-metro Ontario, their employment rates have been higher than for metro youth since 2002



Note: Students are included.

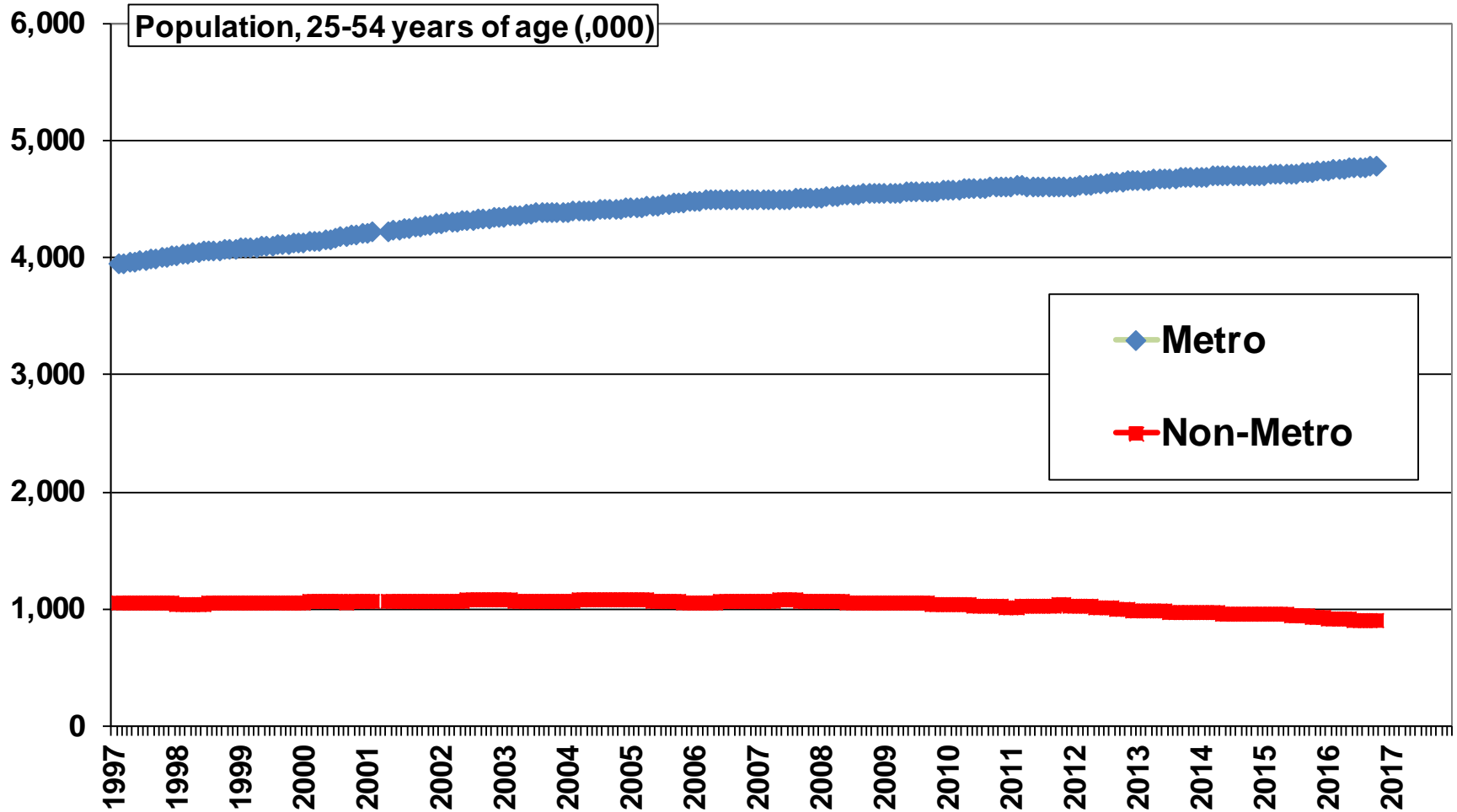
Source: Statistics Canada. Labour Force Survey, CANSIM Tables 282-0001 and 282-0128.

## Charts:

### Non-Metro Number Employed and Employment Rates (i.e. percent employed) by Age

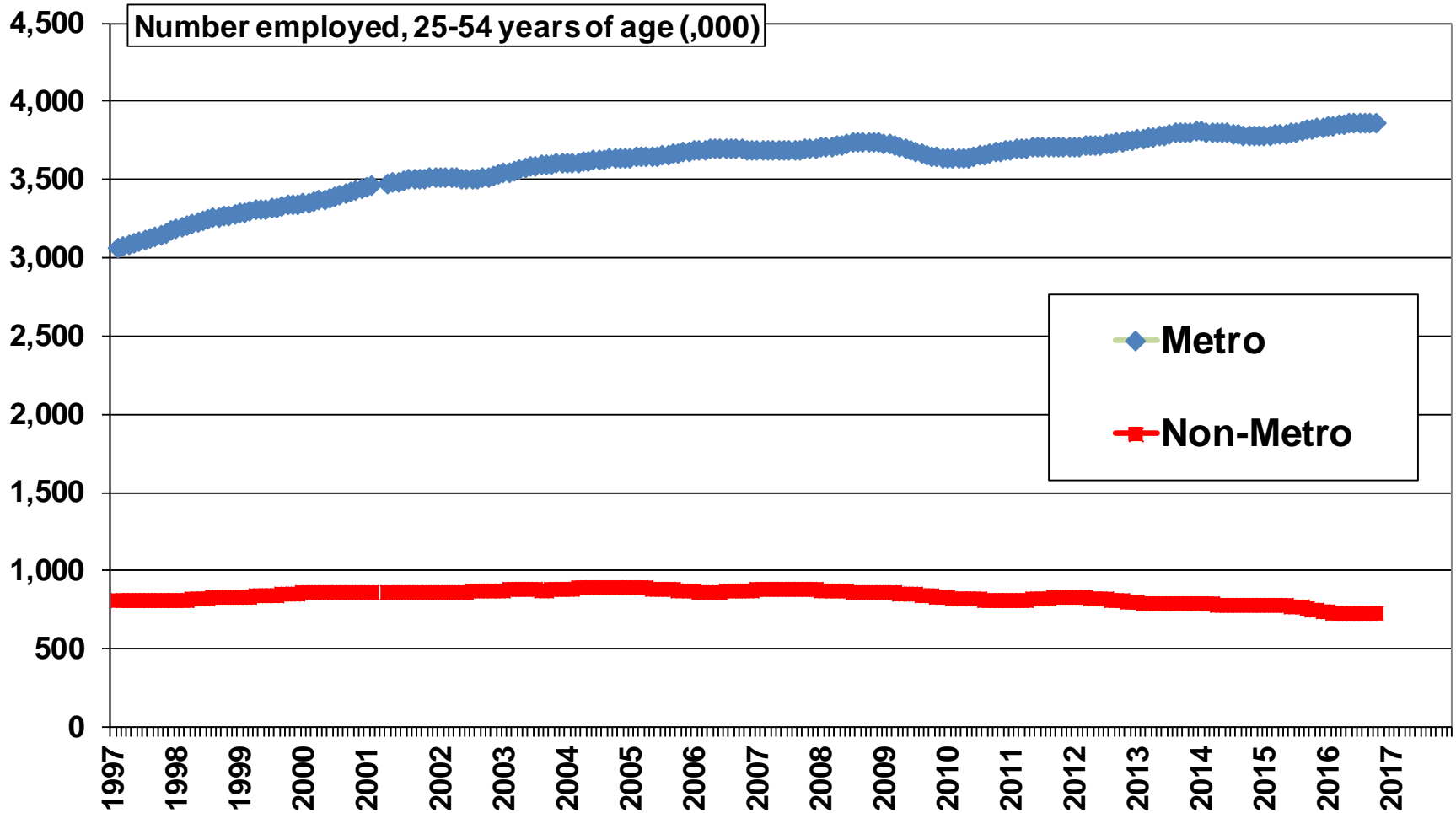
- 15 years and over
- 15 to 24 years
- **25 to 54 years (core-age workforce)**
- 55 to 64 years
- 65 years and over

# In non-metro Ontario, the population 25-54 years of age has been declining since 2004



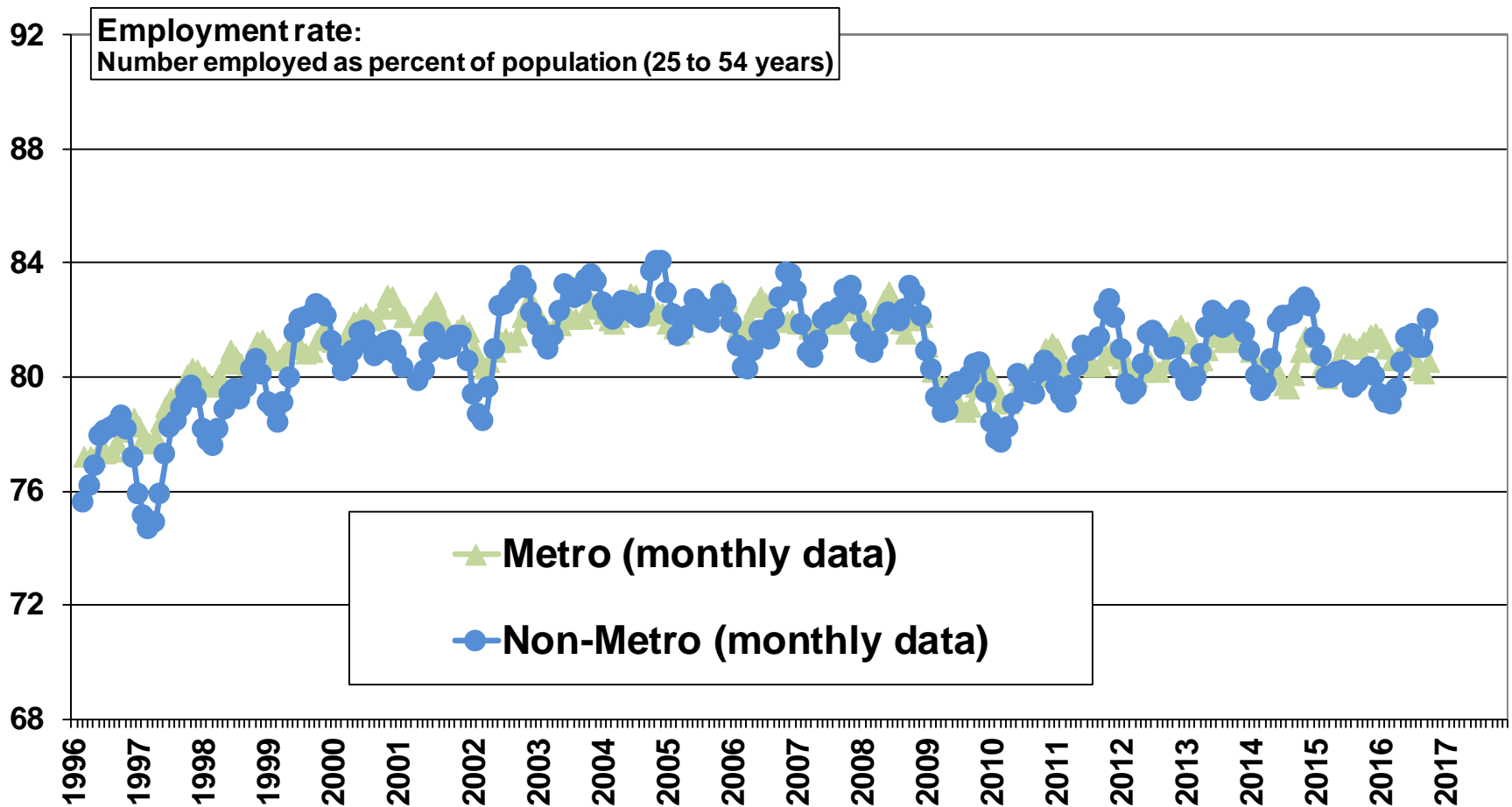
Source: Statistics Canada. Labour Force Survey, CANSIM Tables 282-0001 and 282-0128

# In non-metro Ontario, employment in the core-age workforce (25-54 yr.) has been declining since 2005



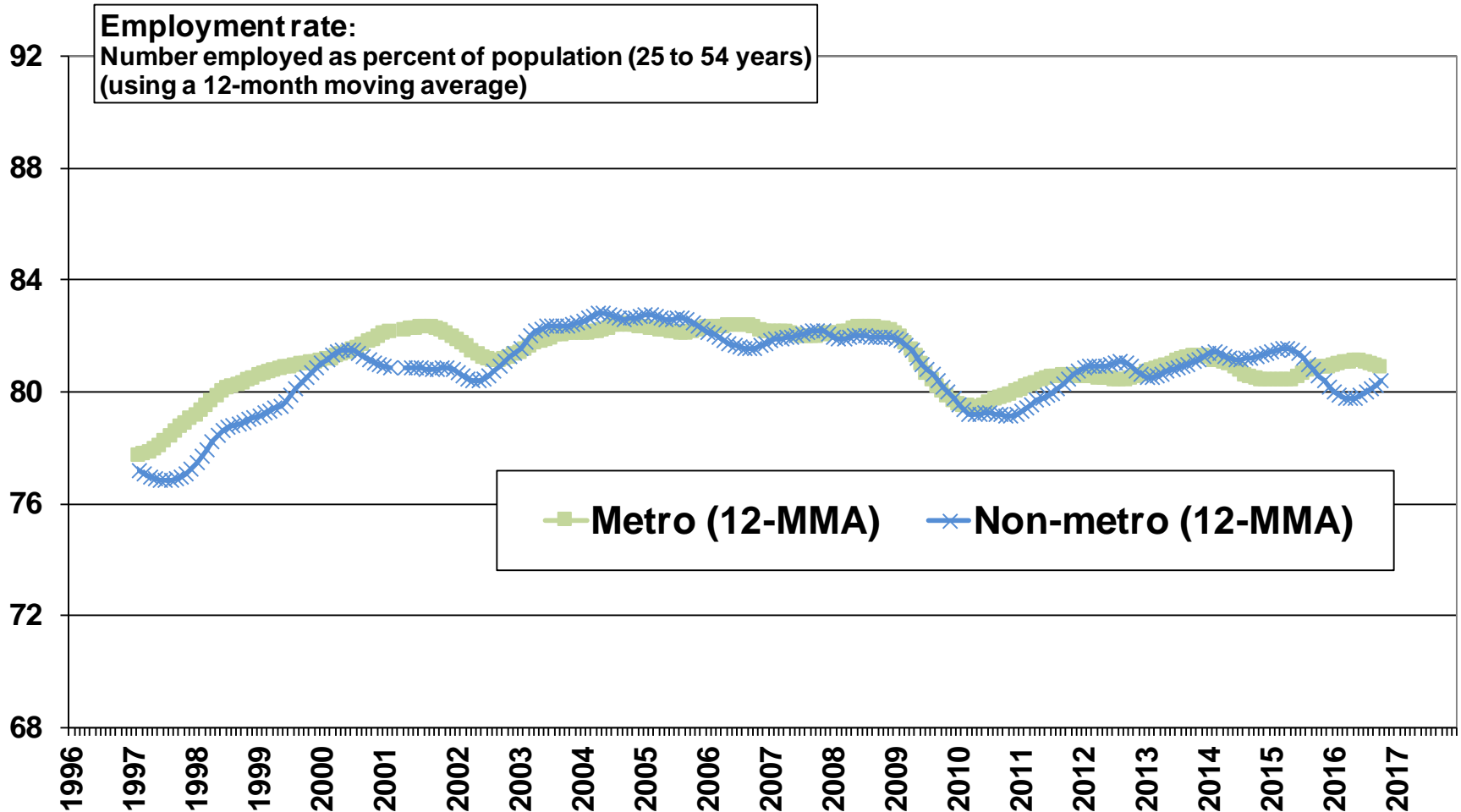
Source: Statistics Canada. Labour Force Survey, CANSIM Tables 282-0001 and 282-0128

# Ontario employment rates for the core-age workforce (25-54 years): Non-metro is (generally) higher than metro in the summer months and lower than metro in the winter months



Source: Statistics Canada. Labour Force Survey, CANSIM Tables 282-0001 and 282-0128

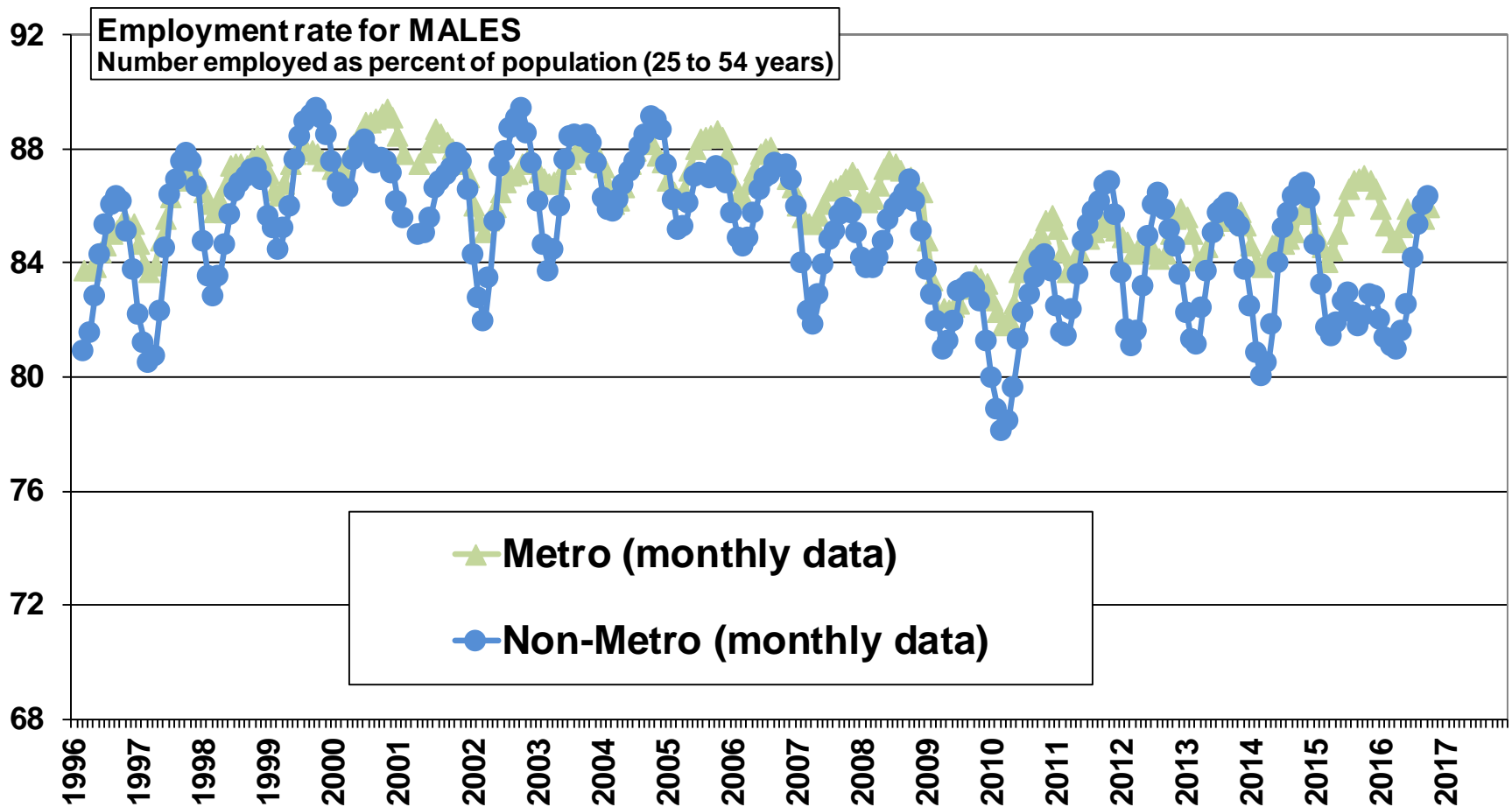
# Ontario employment rates for the core-age workforce (25-54 years): Non-metro has mirrored metro in the average month since 2002



Source: Statistics Canada. Labour Force Survey, CANSIM Tables 026-0001 and 282-0109.

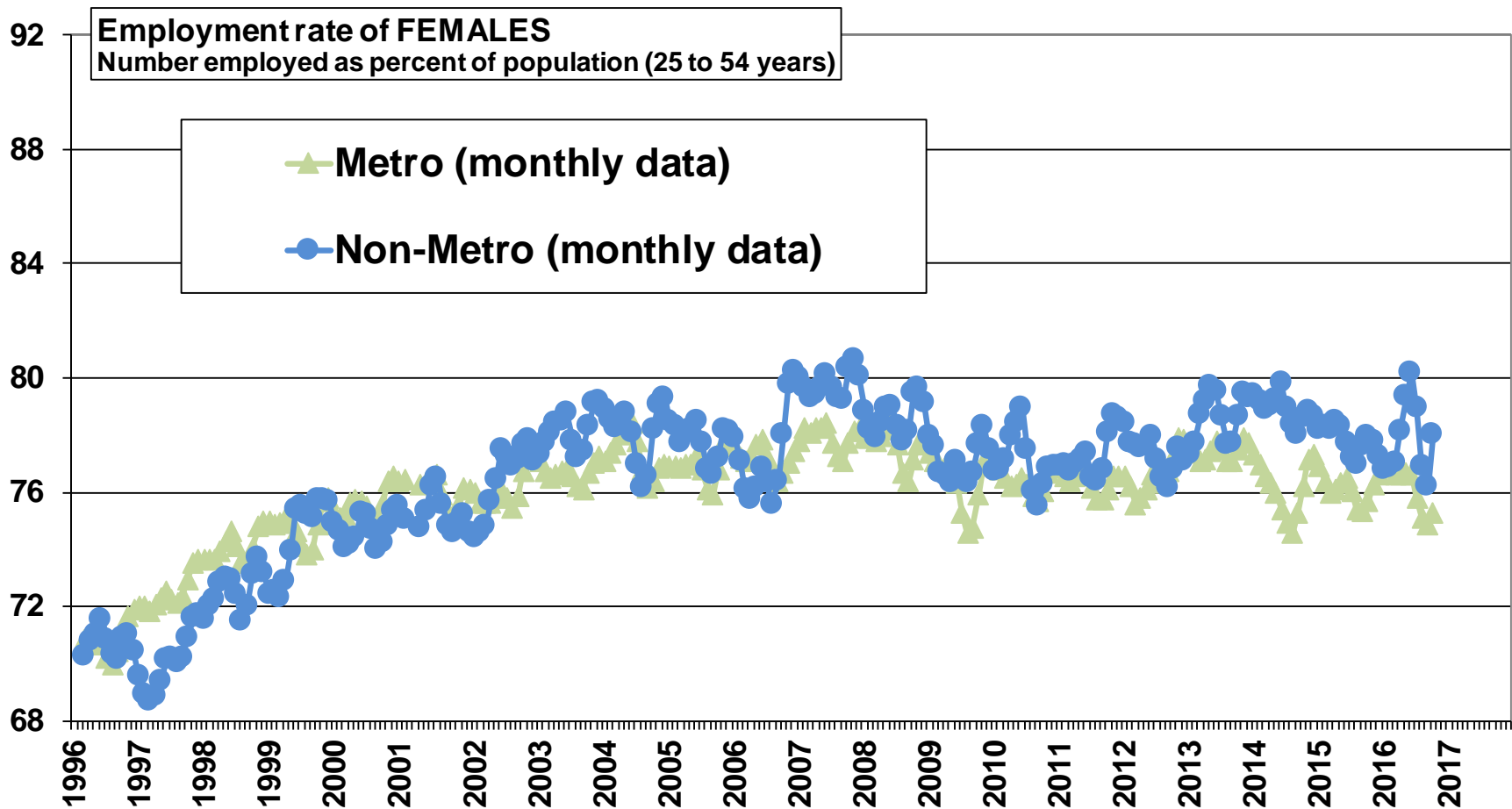


# Ontario MALE employment rates (core-age workforce: 25-54 yr.): Non-metro is "often" higher than metro in the peak summer months and (always) lower than metro in the winter months



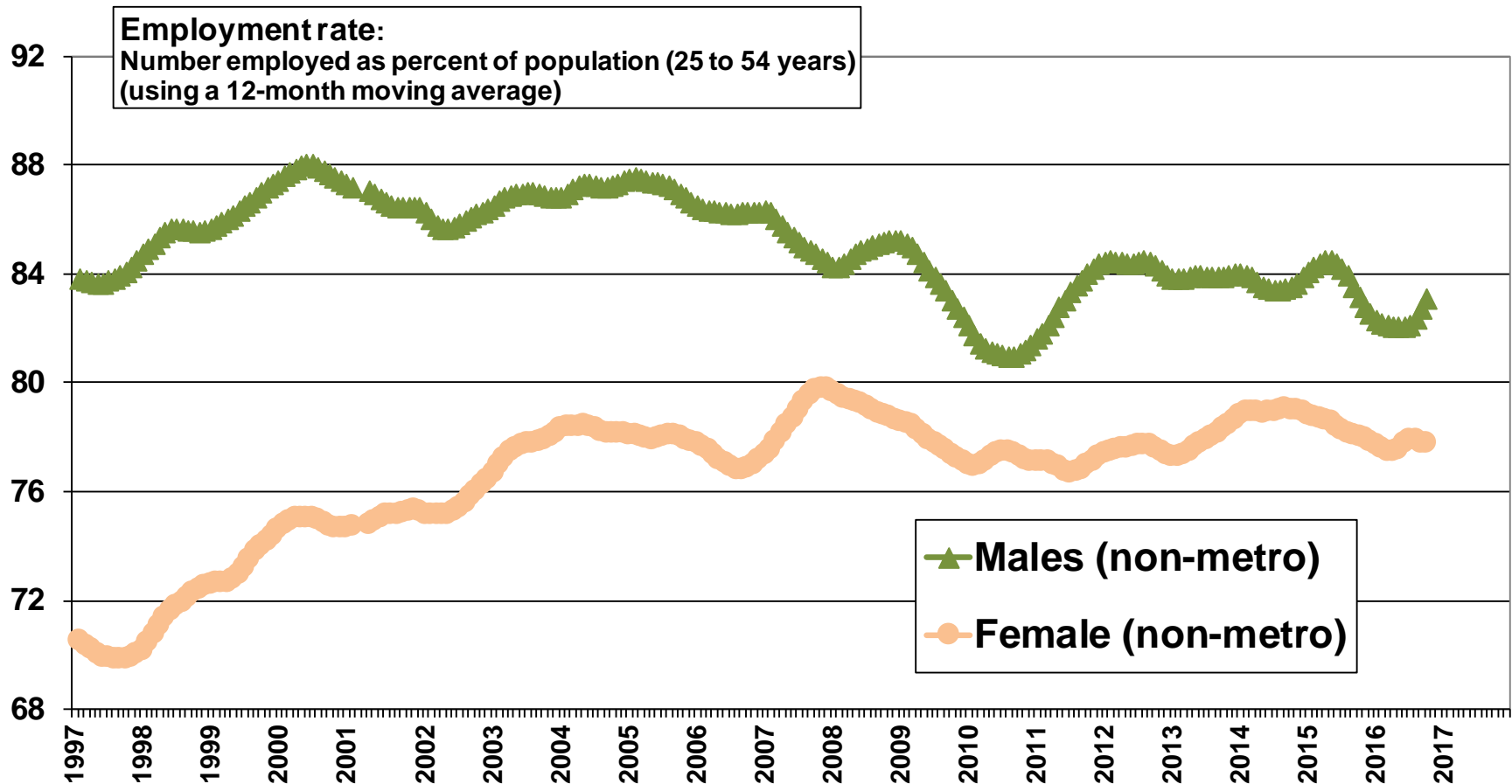
Source: Statistics Canada. Labour Force Survey, CANSIM Tables 026-0001 and 282-0109.

# Ontario FEMALE employment rates (core-age workforce, 25-54 yr.): Non-metro is higher than metro in the peak summermonths and (generally) the same as metro in the winter months



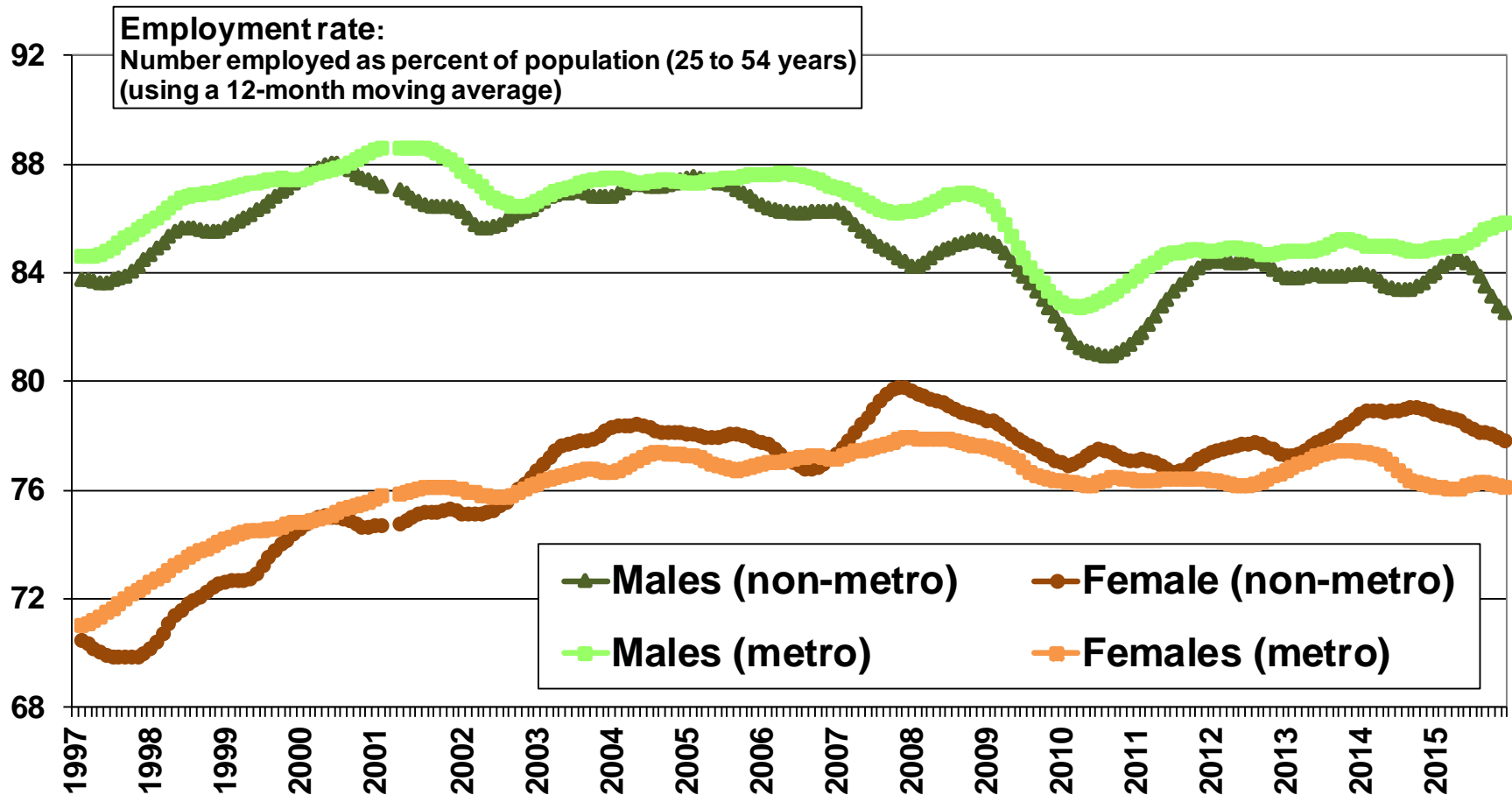
Source: Statistics Canada. Labour Force Survey, CANSIM Tables 282-0001 and 282-0109.

**Ontario NON-METRO employment rates (core-age workforce, 25-54 yr.):**  
**Males: Peaked at 88% in Jun/2000 & declined to 83% in Oct/2016**  
**Female: Peaked at 80% in Nov/2007 & declined to 78% in Oct/2016**



Source: Statistics Canada. Labour Force Survey, CANSIM Tables 026-0001 and 282-0109.

**Ontario employment rates for the core-age workforce (25-54 yr.):**  
**Non-metro males (slightly) below metro males since Apr/2005**  
**Non-metro females (slightly) above metro females since Dec/2006**



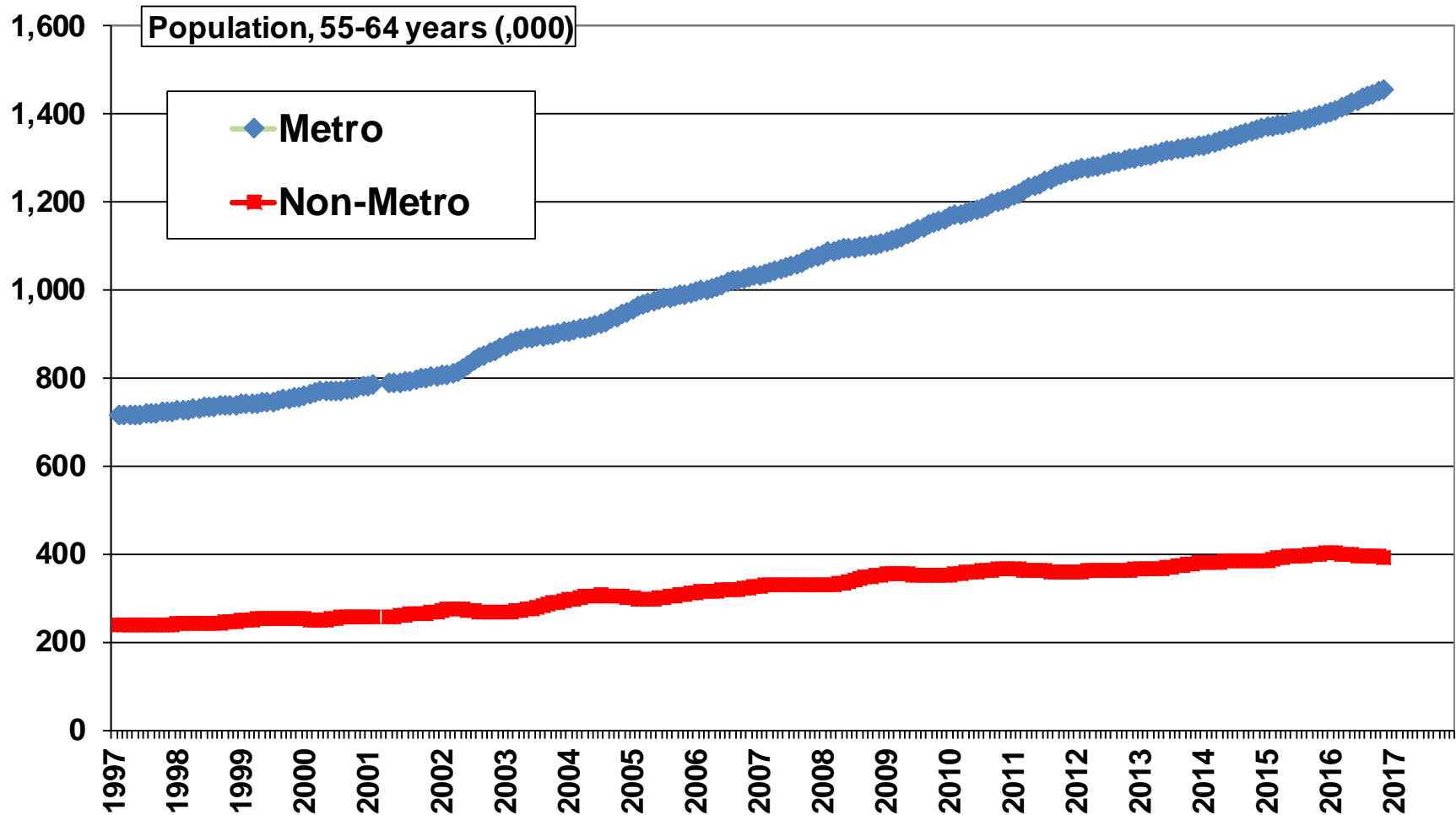
Source: Statistics Canada. Labour Force Survey, CANSIM Tables 282-0001 and 282-0109.

# Charts:

## Non-Metro Number Employed and Employment Rates (i.e. percent employed) by Age

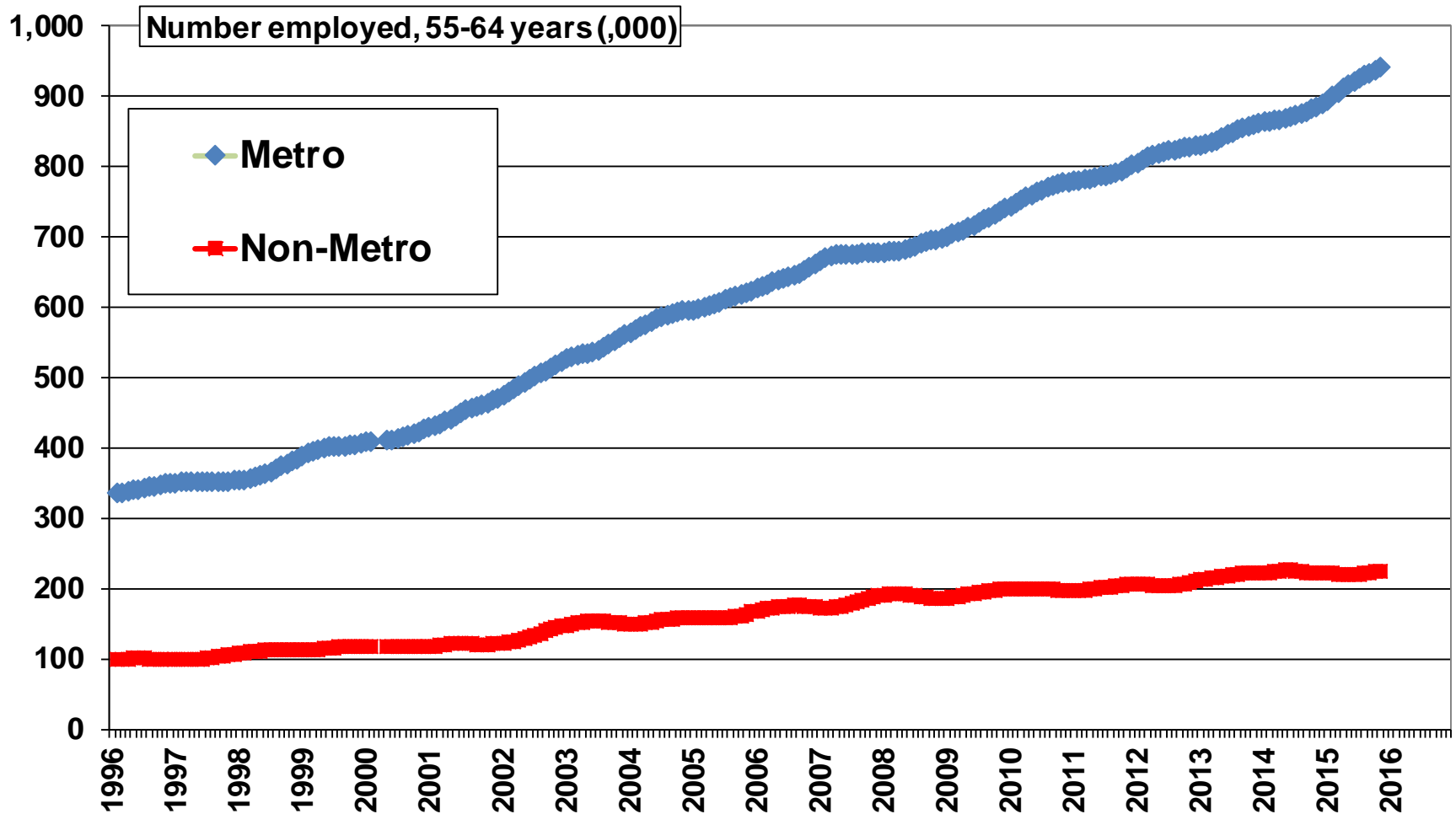
- 15 years and over
- 15 to 24 years
- 25 to 54 years (core-age workforce)
- **55 to 64 years**
- 65 years and over

# In non-metro Ontario, the population of individuals, 55-64 years of age, has grown continuously



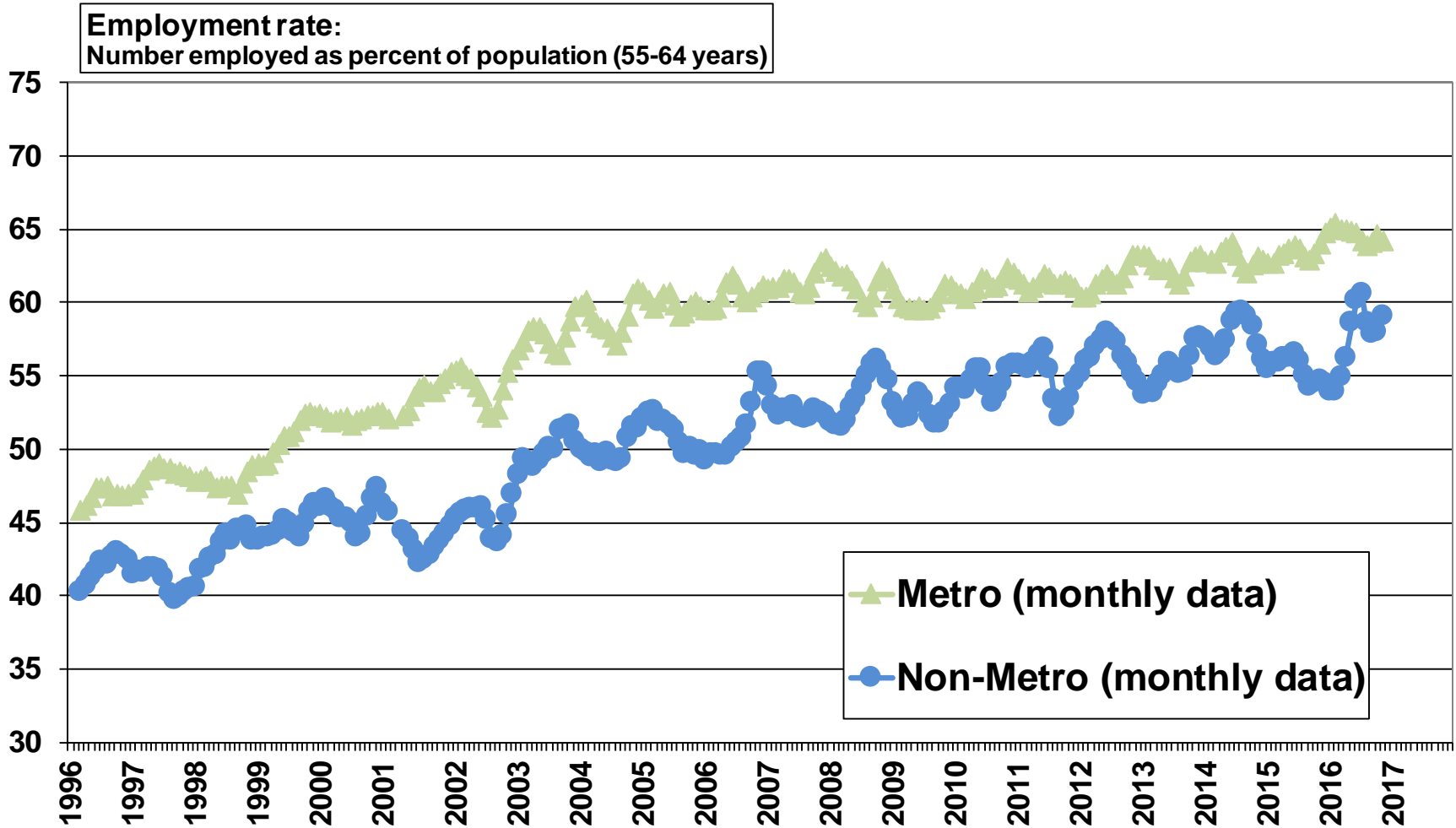
Source: Statistics Canada. Labour Force Survey, CANSIM Tables 282-0001 and 282-0128

# Employment of individuals, 55-64 years of age, is growing in metro and non-metro Ontario



Source: Statistics Canada. Labour Force Survey, CANSIM Tables 282-0001 and 282-0128

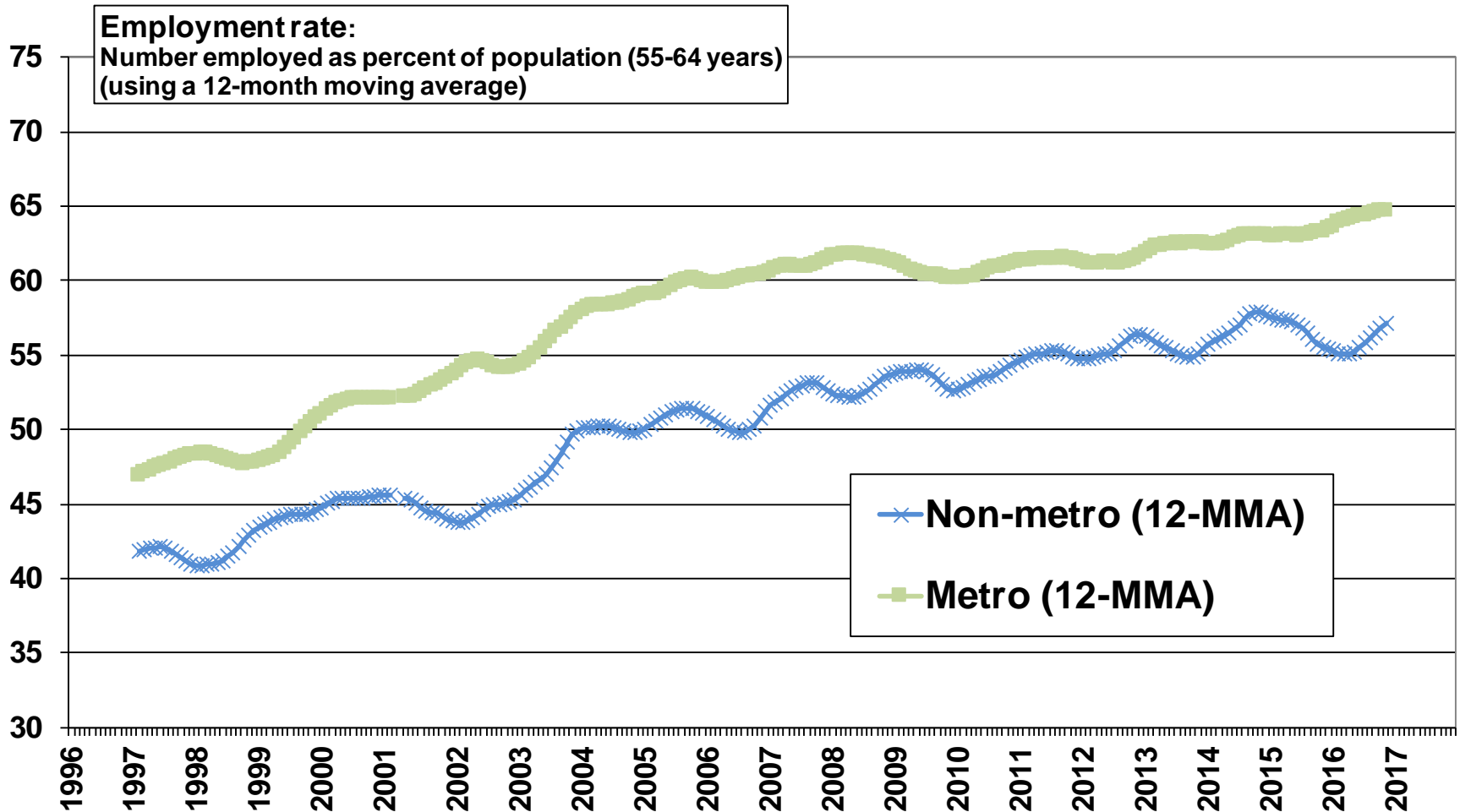
# The employment rate of individuals, 55 - 64 years of age, has been growing continuously



Source: Statistics Canada. Labour Force Survey, CANSIM Tables 282-0001 and 282-0128

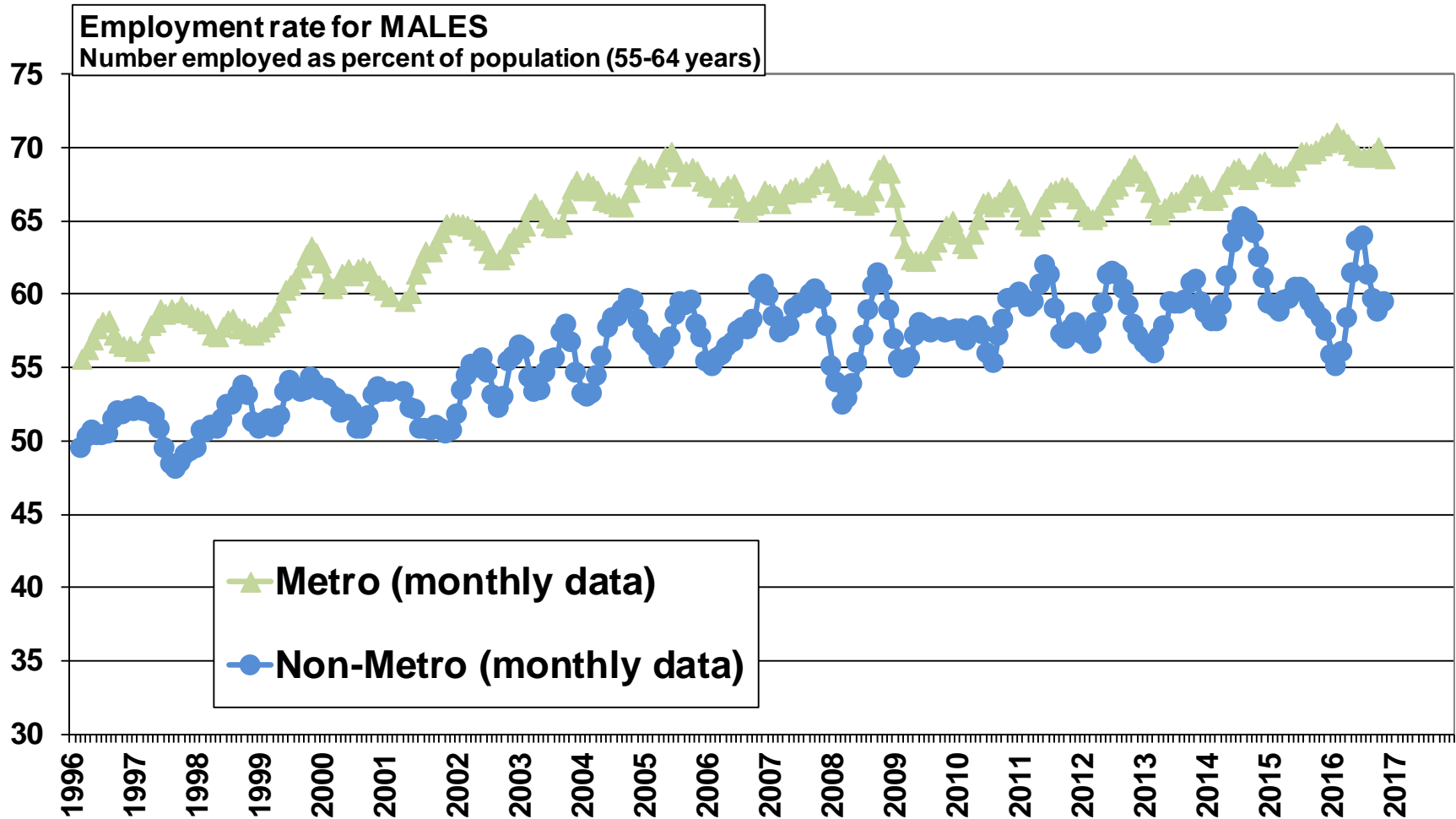


# Ontario employment rates, 55-64 years: In the average month, non-metro is lower than metro



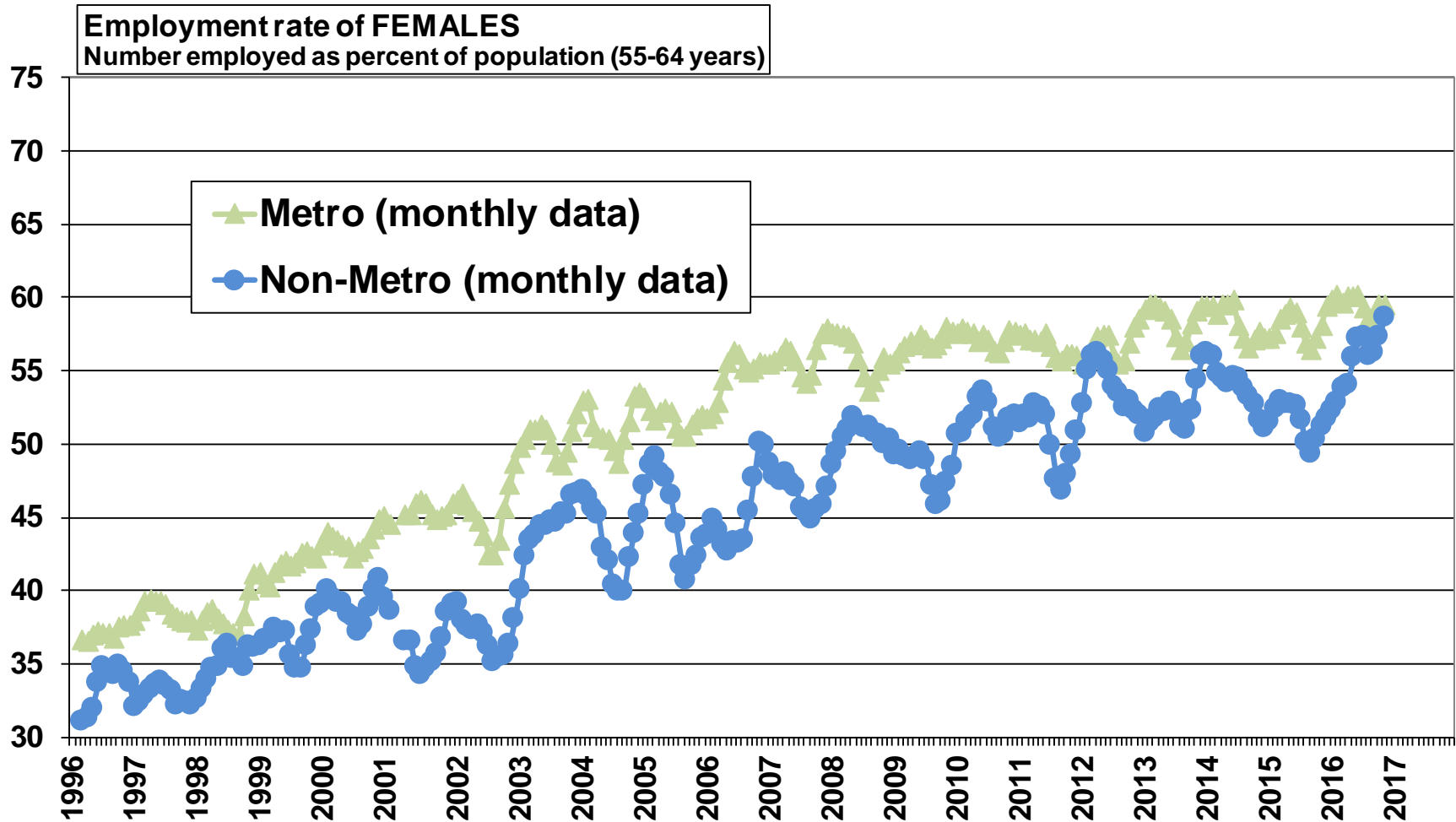
Source: Statistics Canada. Labour Force Survey, CANSIM Tables 282-0001 and 282-0128.

# In non-metro Ontario, the employment rate of MALE individuals, 55 - 64 years, has been growing continuously



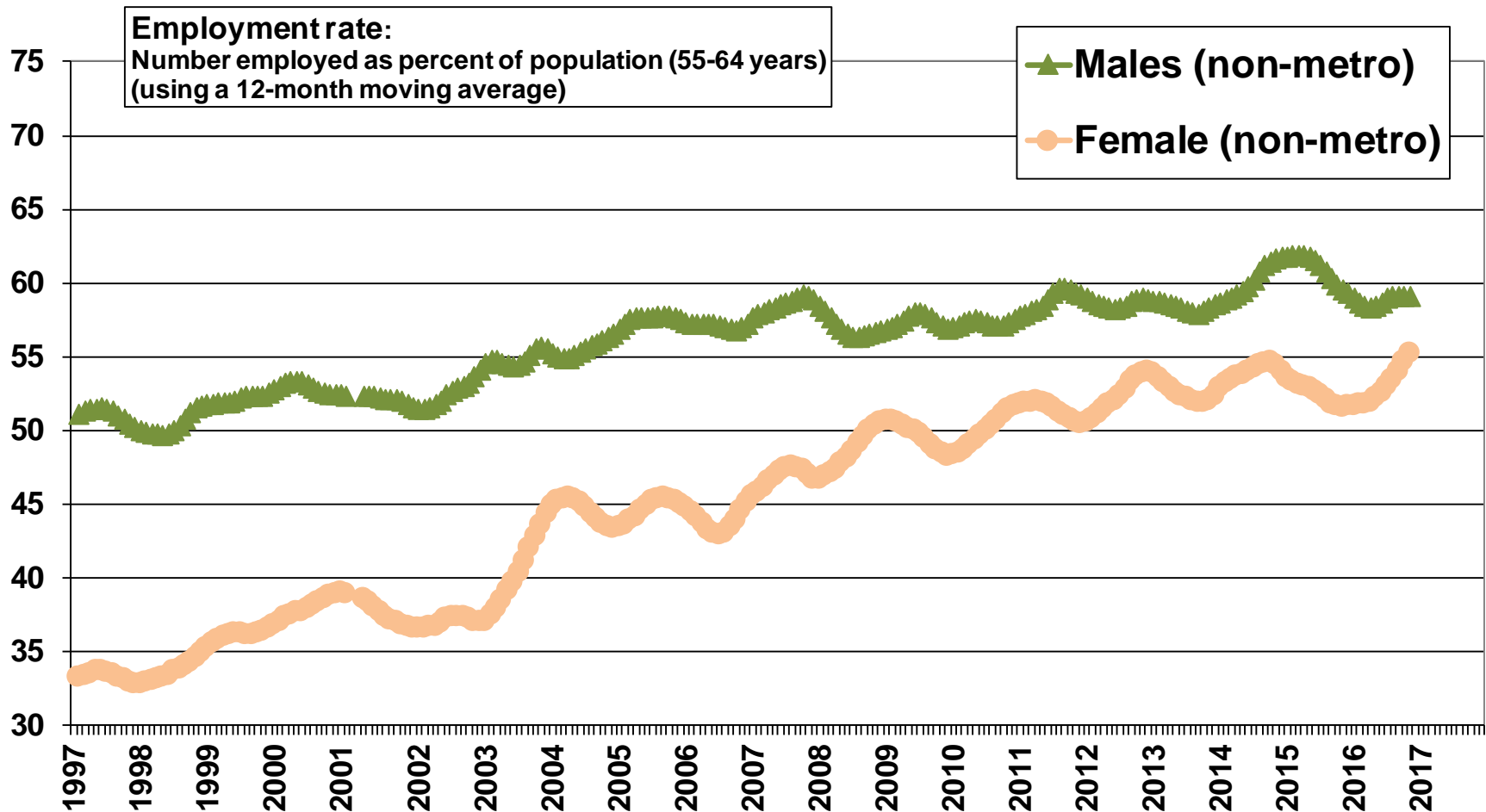
Source: Statistics Canada. Labour Force Survey, CANSIM Tables 026-0001 and 282-0109.

# The employment rate of FEMALE individuals, 55-64 years, has been growing continuously



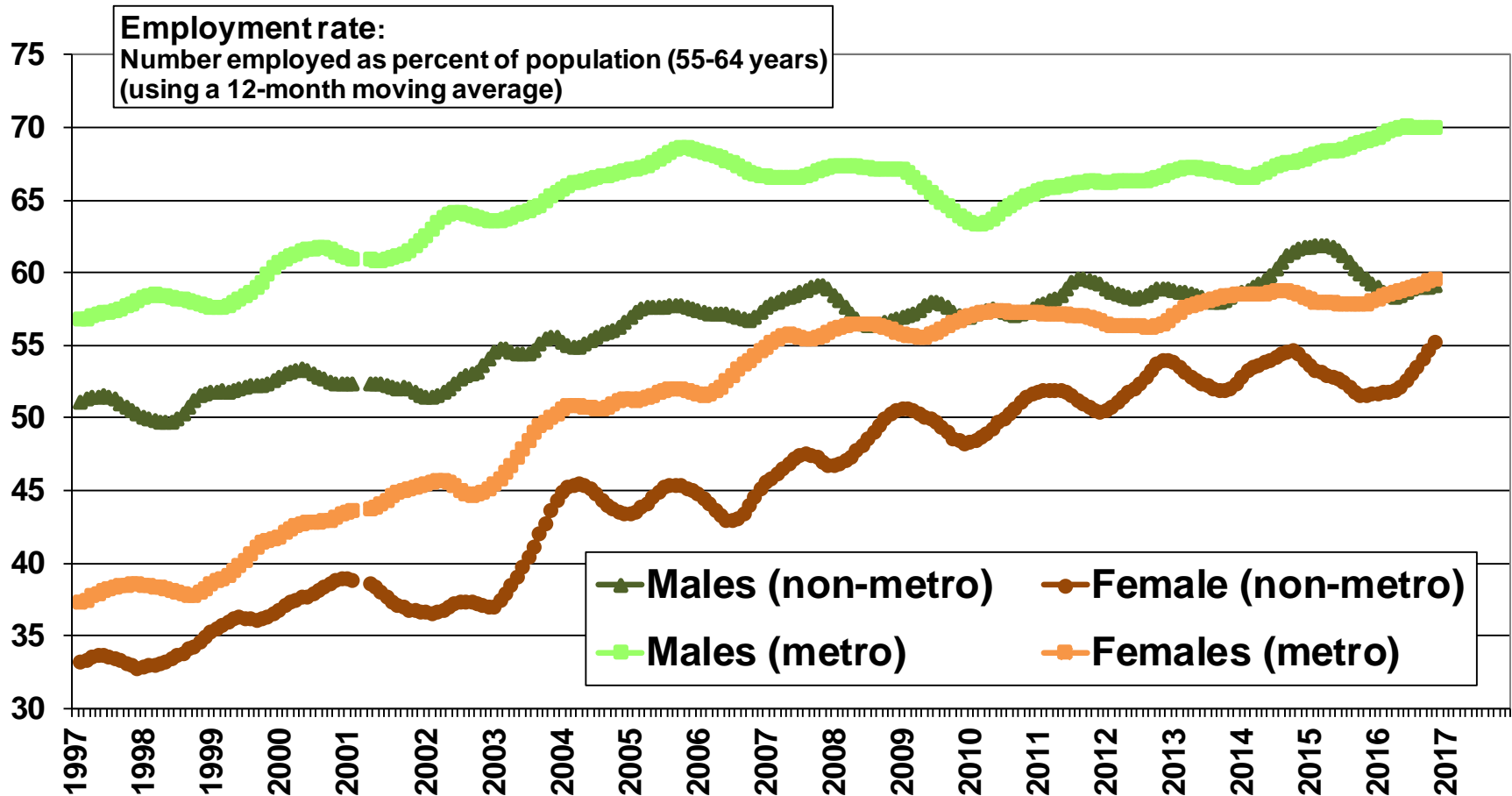
Source: Statistics Canada. Labour Force Survey, CANSIM Tables 282-0001 and 282-0109.

# For individuals 55-64 years in non-metro Ontario, the employment for females is lower but is growing faster than for males



Source: Statistics Canada. Labour Force Survey, CANSIM Tables 282-0001 and 282-0128.

# In non-metro Ontario, the employment rate is lower for both males and females, 55-64 years, compared to metro areas



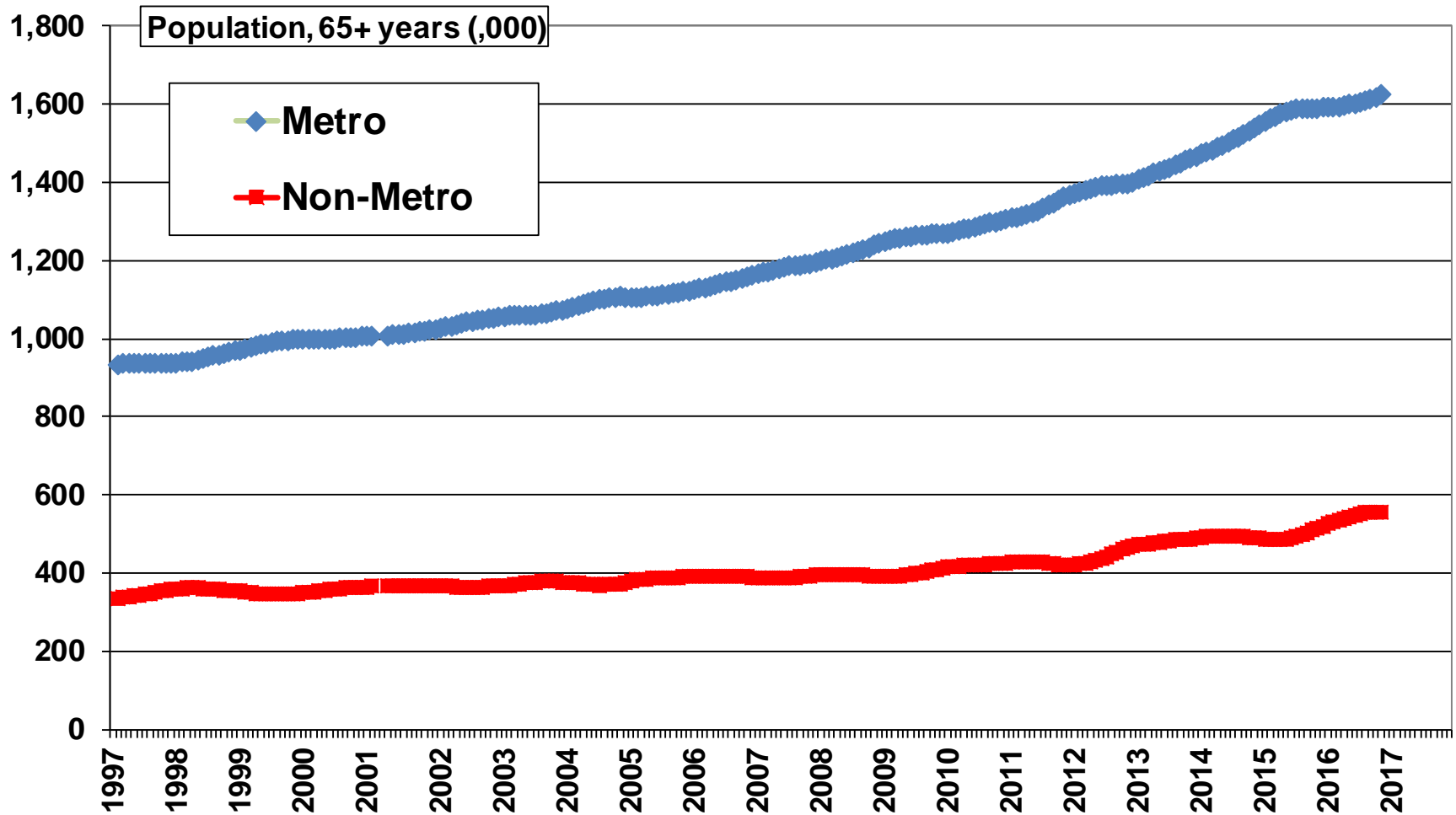
Source: Statistics Canada. Labour Force Survey, CANSIM Tables 282-0001 and 282-0128.

## Charts:

# Non-Metro Number Employed and Employment Rates (i.e. percent employed) by Age

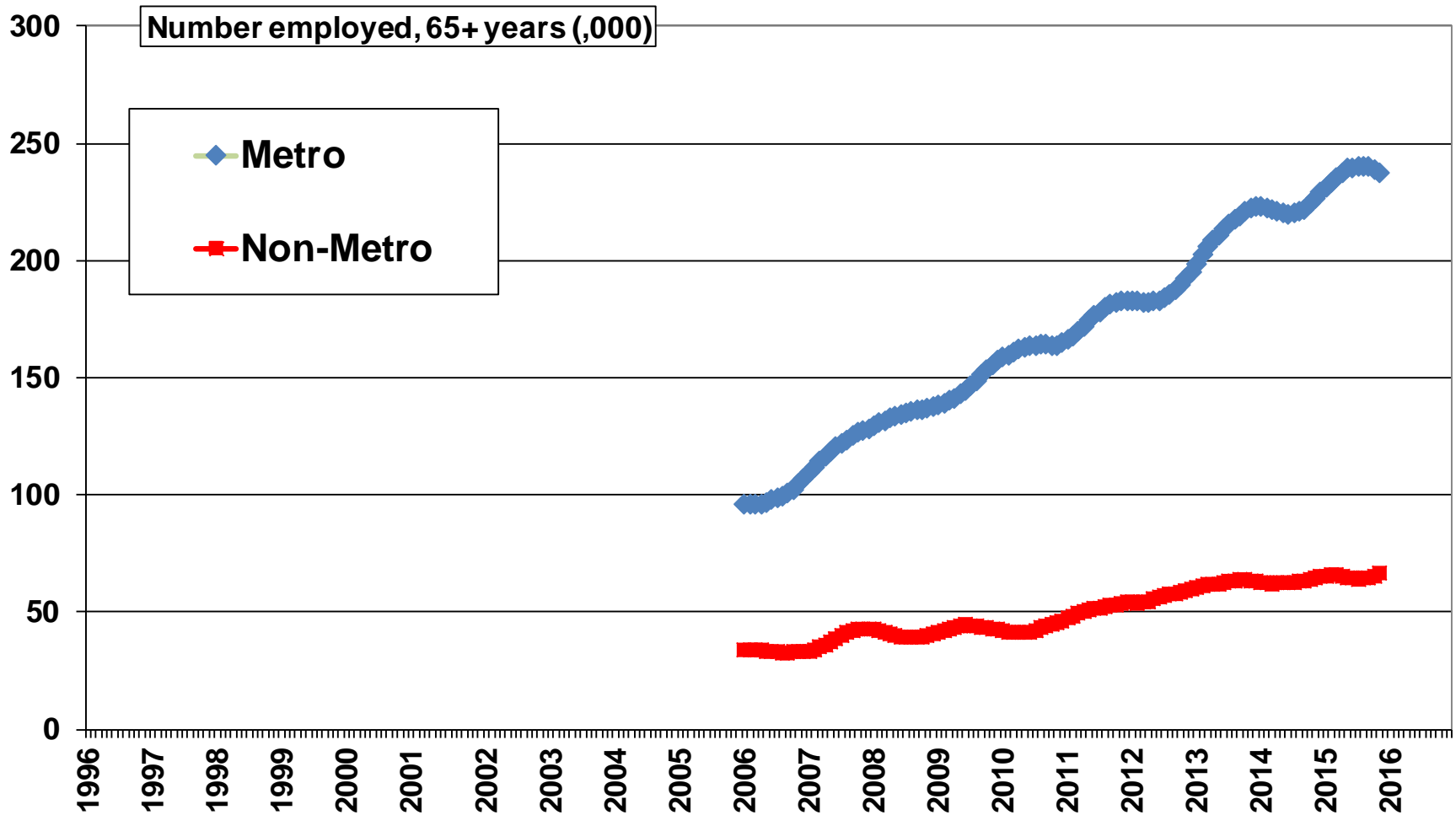
- 15 years and over
- 15 to 24 years
- 25 to 54 years (core-age workforce)
- 55 to 64 years
- **65 years and over**

# The population of seniors, 65+ years, is growing in metro and non-metro Ontario



Source: Statistics Canada. Labour Force Survey, CANSIM Tables 282-0001 and 282-0128

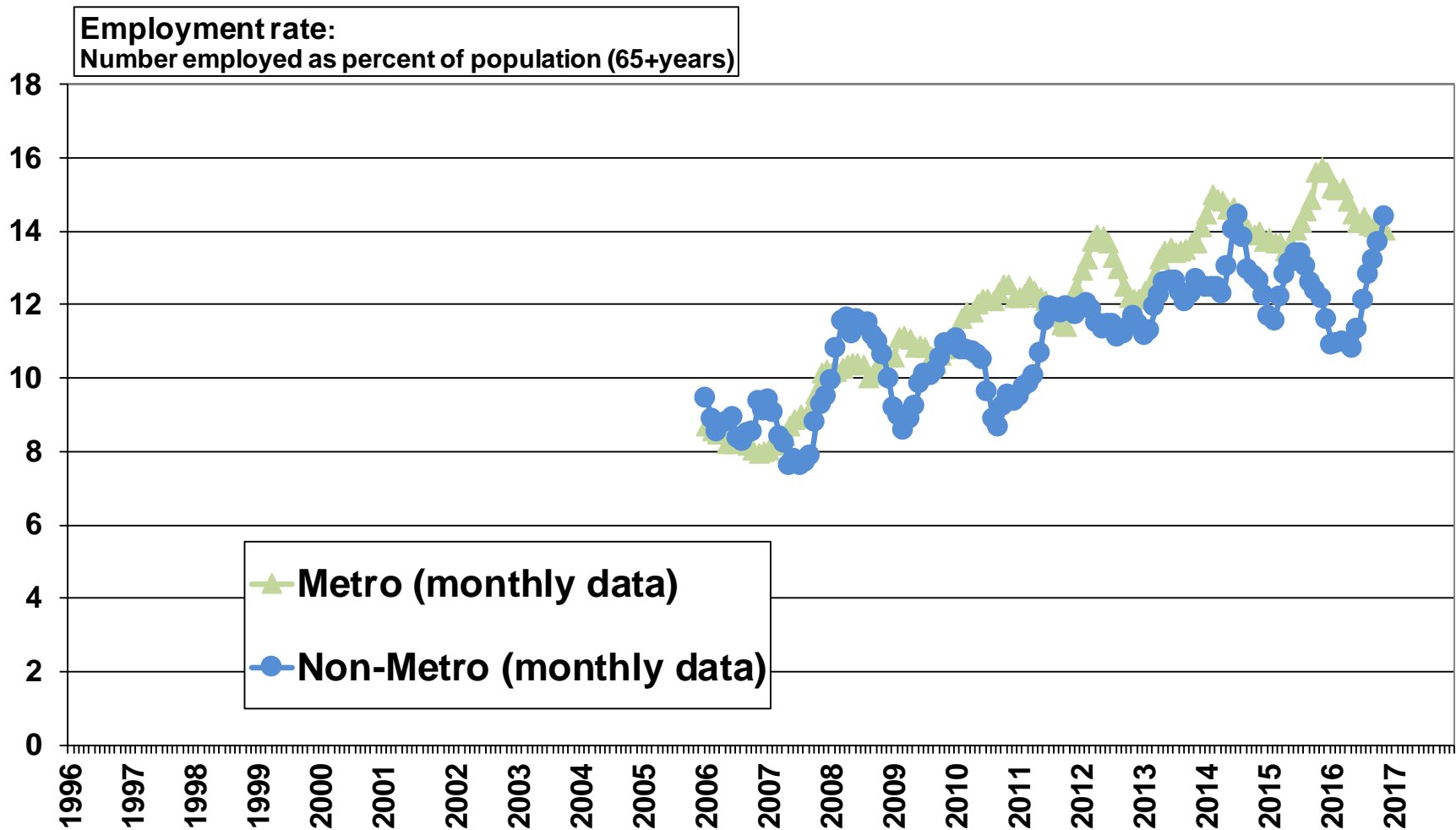
# Employment of seniors, 65+ years, is growing in metro and non-metro Ontario



Source: Statistics Canada. Labour Force Survey, CANSIM Tables 282-0001 and 282-0128

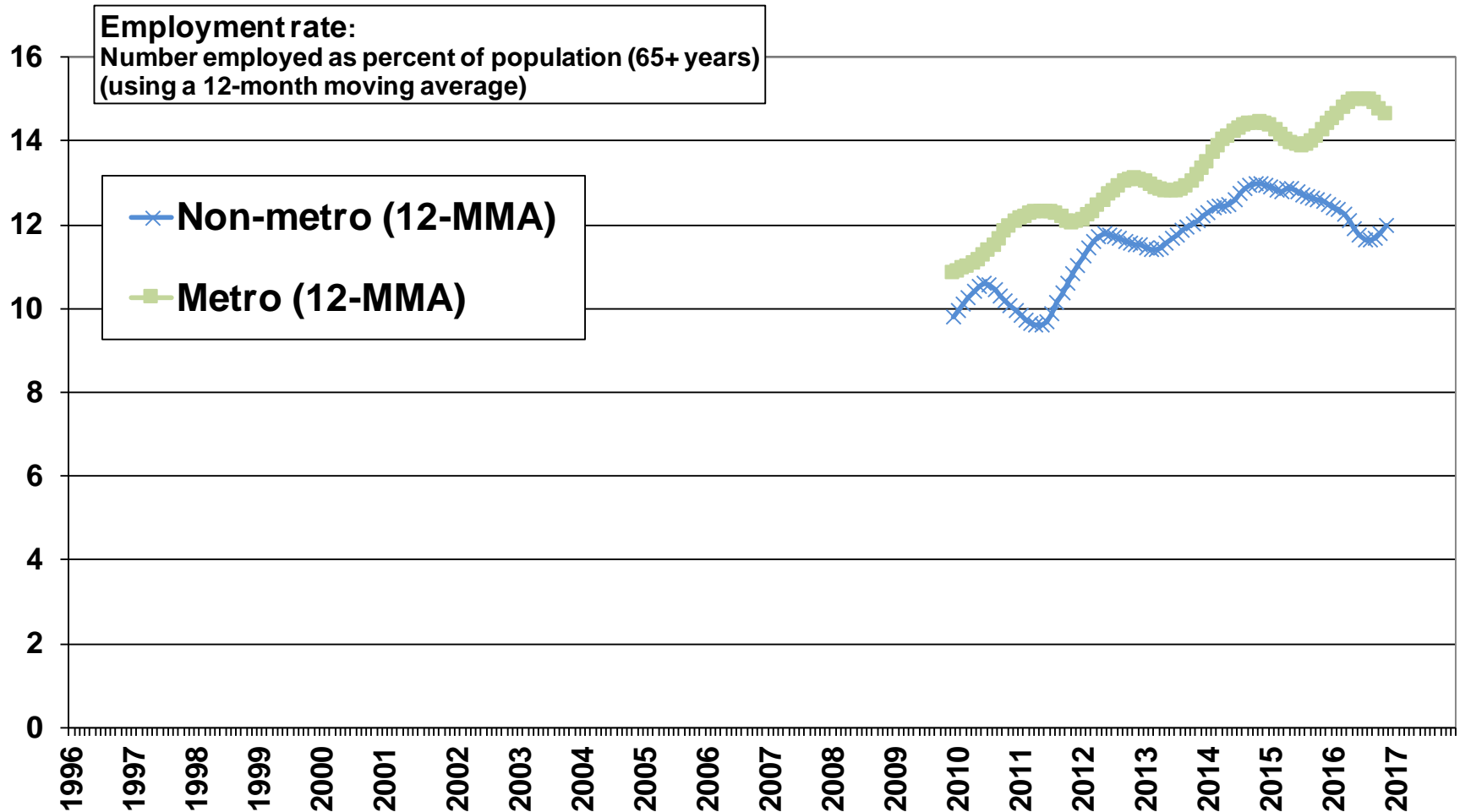


# The employment rate for seniors, 65+ years, is similar in metro and non-metro Ontario



Source: Statistics Canada. Labour Force Survey, CANSIM Tables 282-0001 and 282-0128

# Ontario employment rates for seniors 65+ years: In the average month, non-metro is lower than metro



Source: Statistics Canada. Labour Force Survey, CANSIM Tables 282-0001 and 282-0128.