

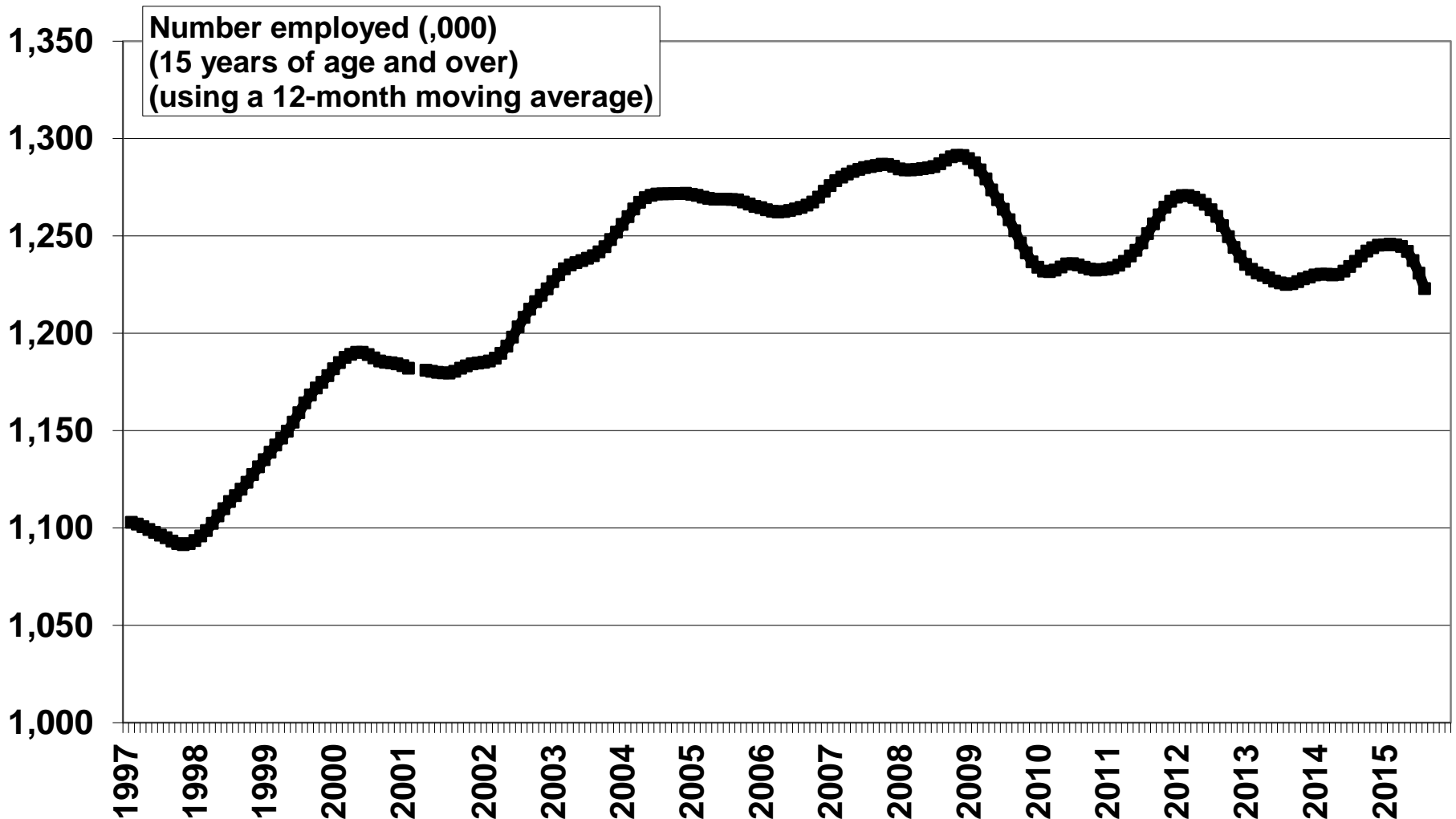
Trends in employment levels and employment rates: Ontario, to August, 2015

1. Employment levels
 - a. Non-metro (non-CMA) areas
 - b. Each economic region
2. Employment rates
 - a. Non-metro (non-CMA) areas
 - b. Each economic region

Level and trends in employment levels and employment rates: Ontario, to August, 2015

1. **Employment levels**
 - a. **Non-metro (non-CMA) areas**
 - b. Each economic region
2. Employment rates
 - a. Non-metro (non-CMA) areas
 - b. Each economic region

Ontario's non-metro employment was 1.22 million in August, 2015 -- the same level as December, 2002

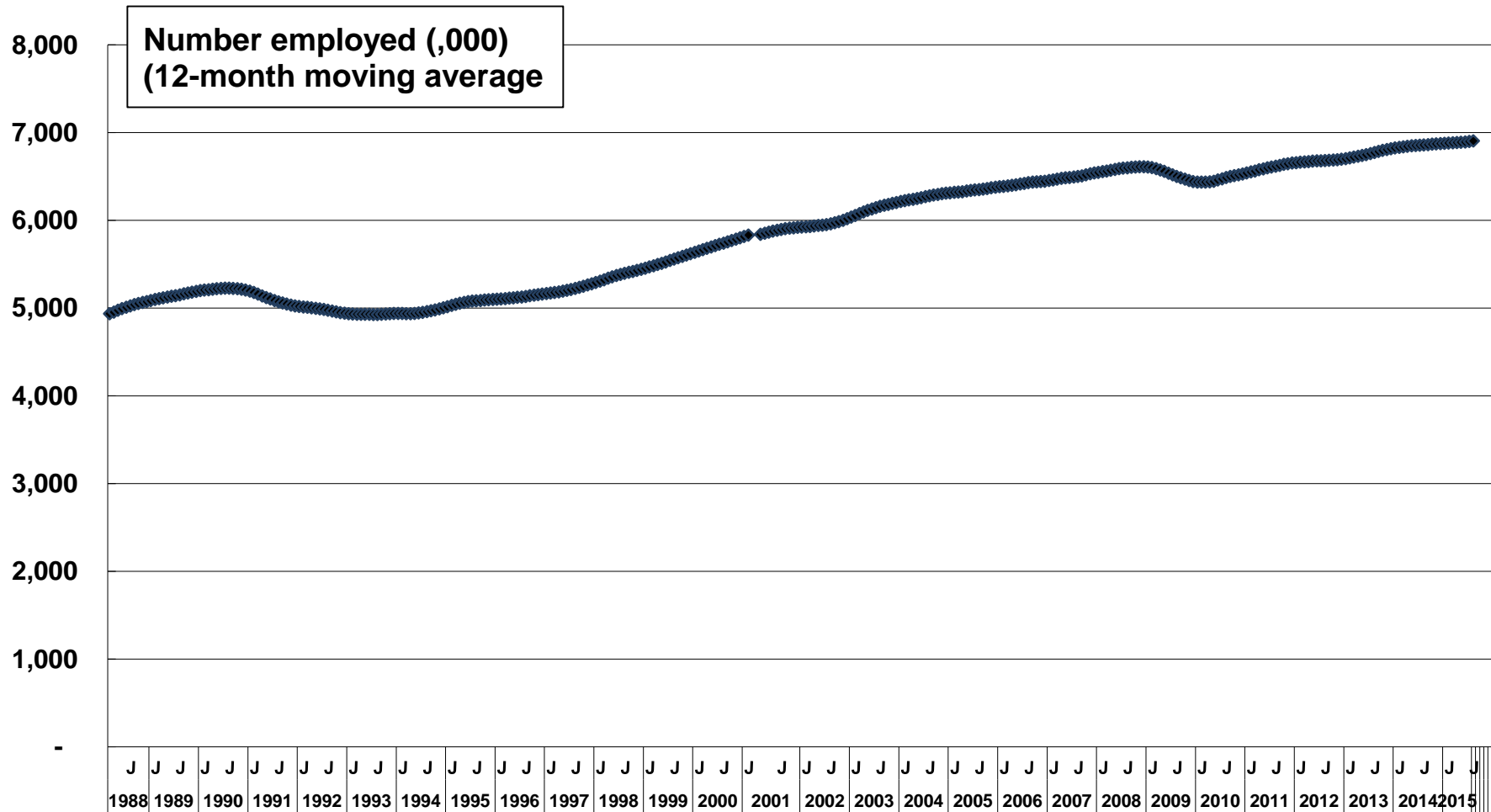


Source: Statistics Canada. Labour Force Survey, CANSIM Tables 282-0007 and 282-0124.

Level and trends in employment levels and employment rates: Ontario, to August, 2015

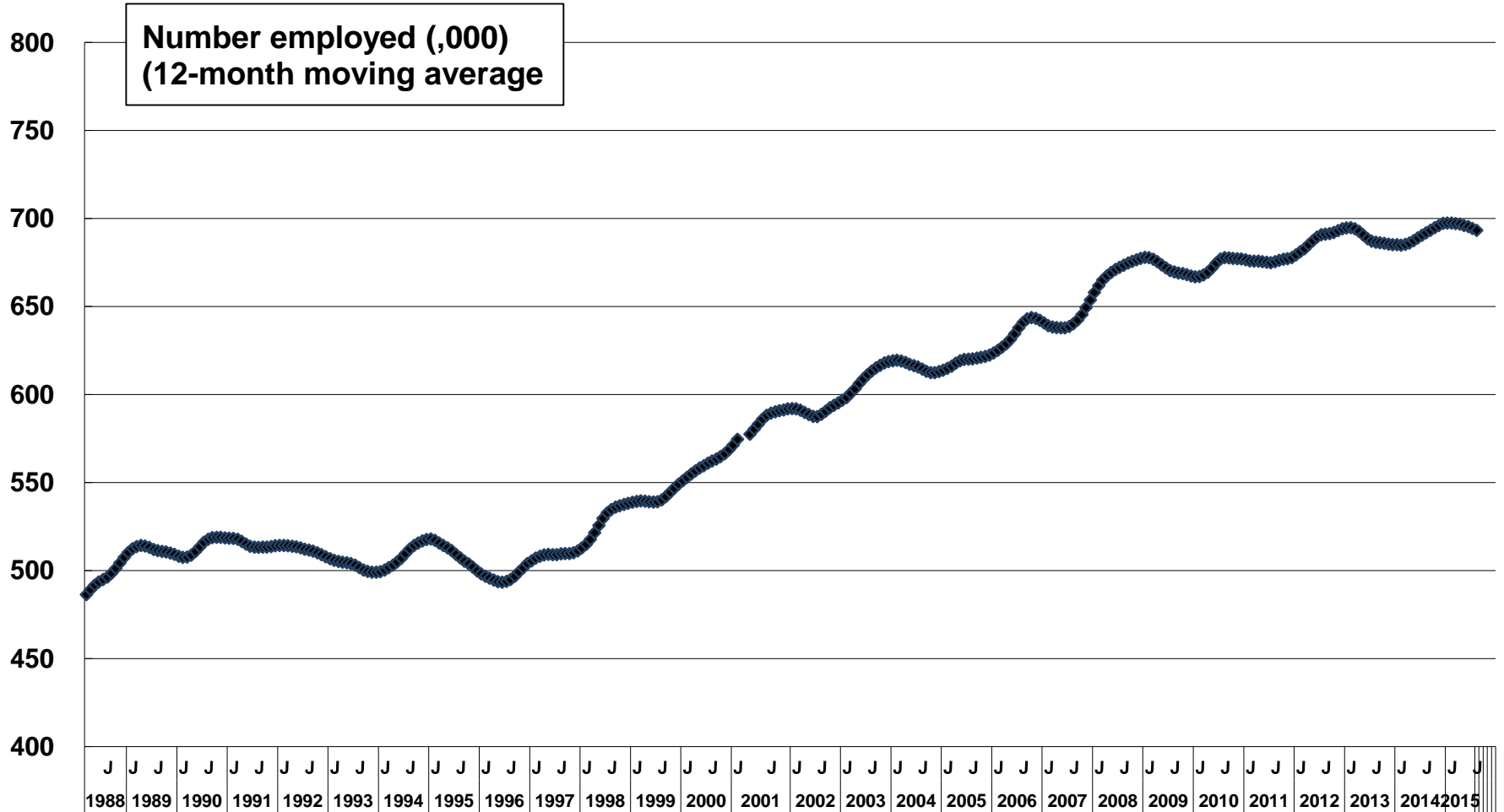
1. **Employment levels**
 - a. Non-metro (non-CMA) areas
 - b. Each economic region**
2. Employment rates
 - a. Non-metro (non-CMA) areas
 - b. Each economic region

— Ontario



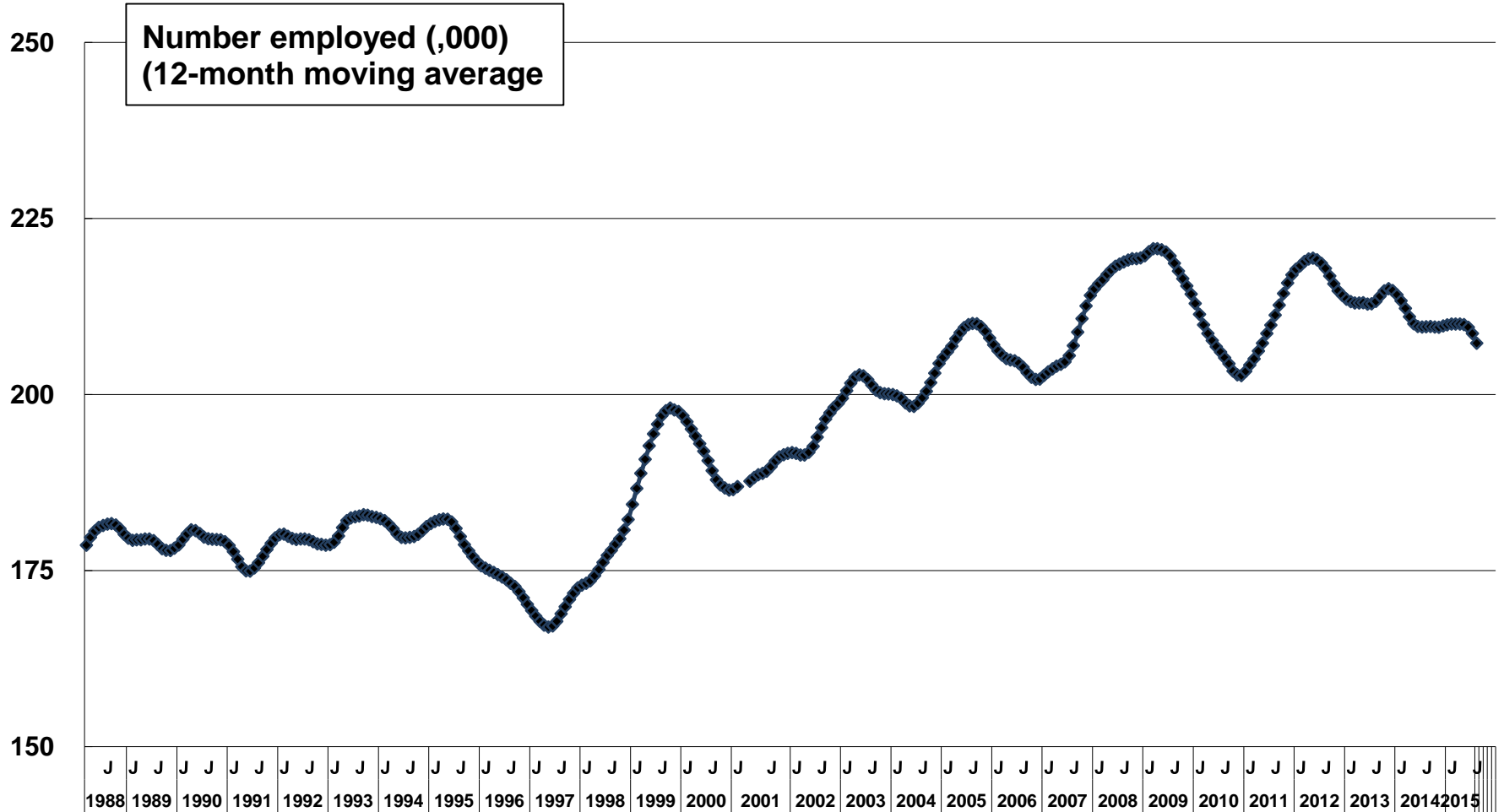
Source: Statistics Canada, Labour Force Survey, CANSIM Table 282-0124.

Ottawa (and area) Economic Region, Ontario



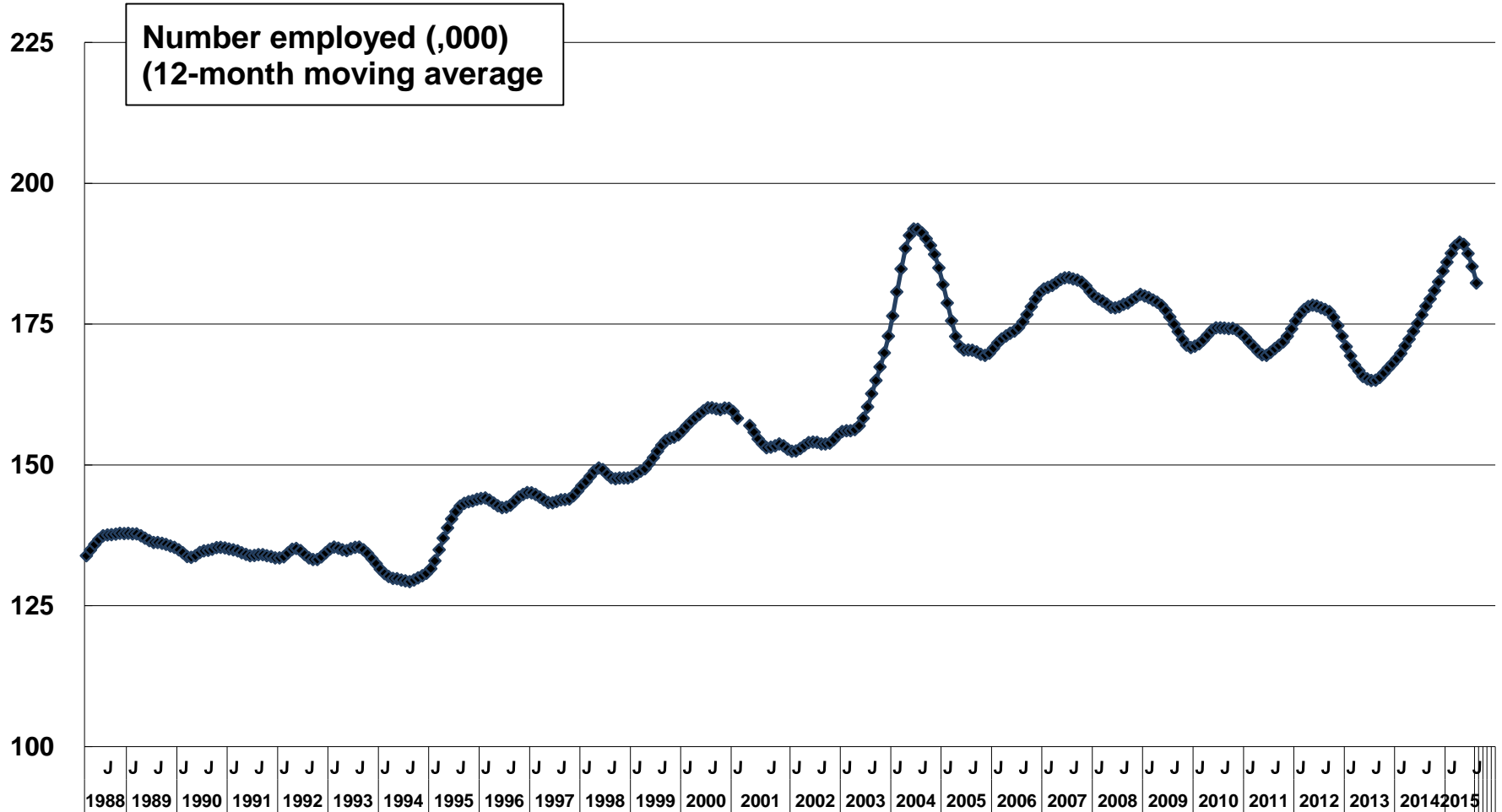
Source: Statistics Canada, Labour Force Survey, CANSIM Table 282-0124.

Kingston-Pembroke Economic Region, Ontario



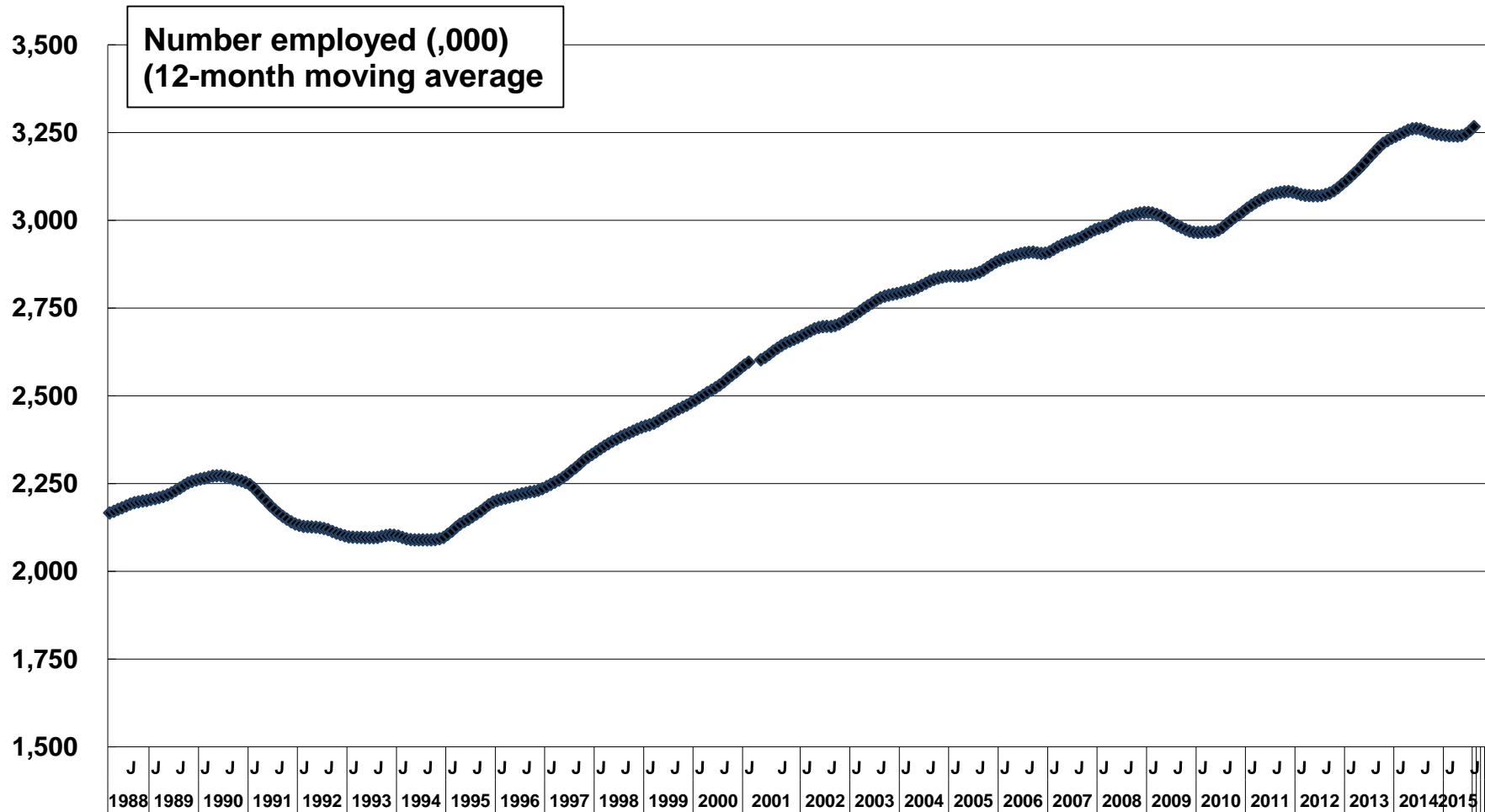
Source: Statistics Canada, Labour Force Survey, CANSIM Table 282-0124.

Muskoka-Kawarthas Economic Region, Ontario



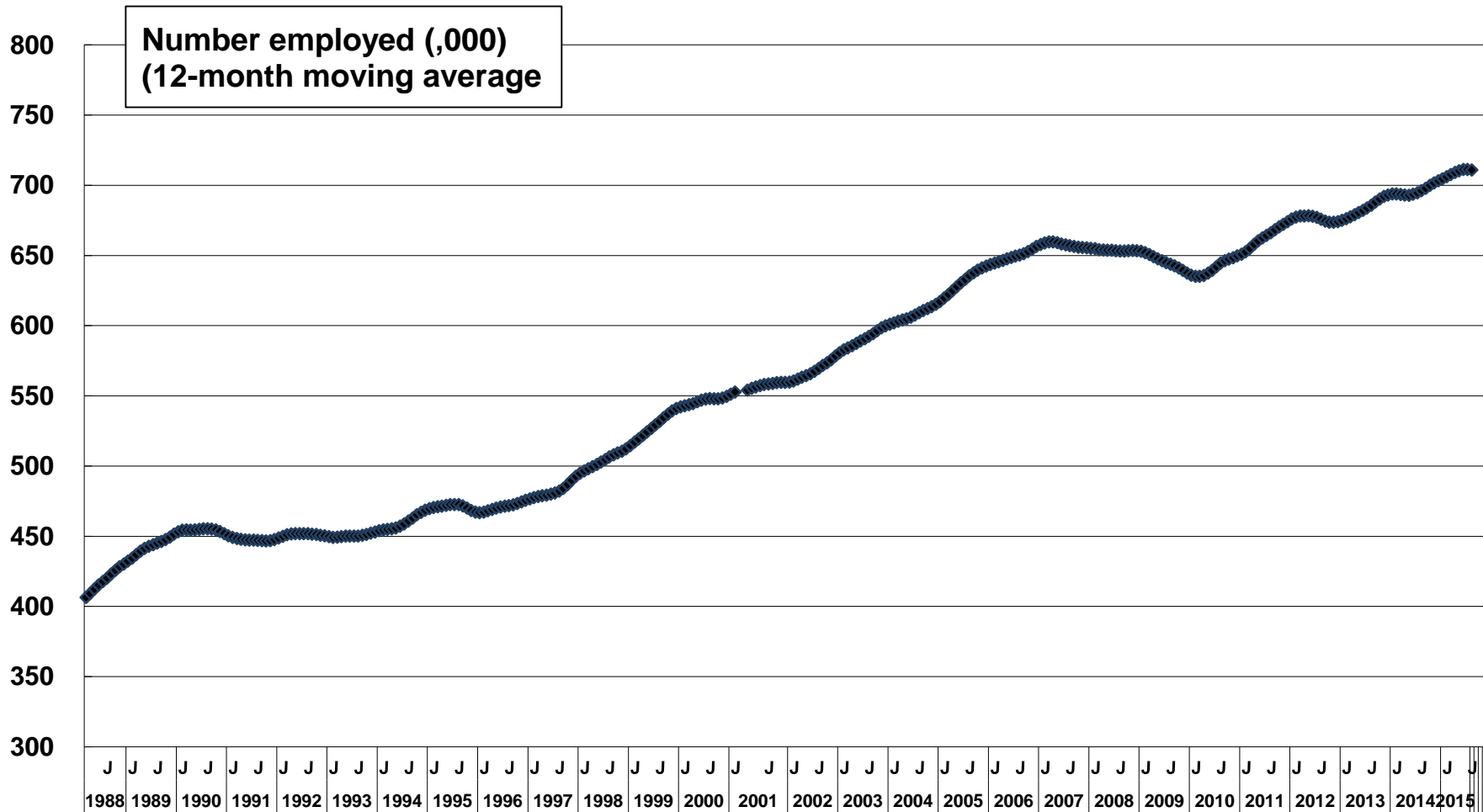
Source: Statistics Canada, Labour Force Survey, CANSIM Table 282-0124.

Toronto (and area) Economic Region, Ontario



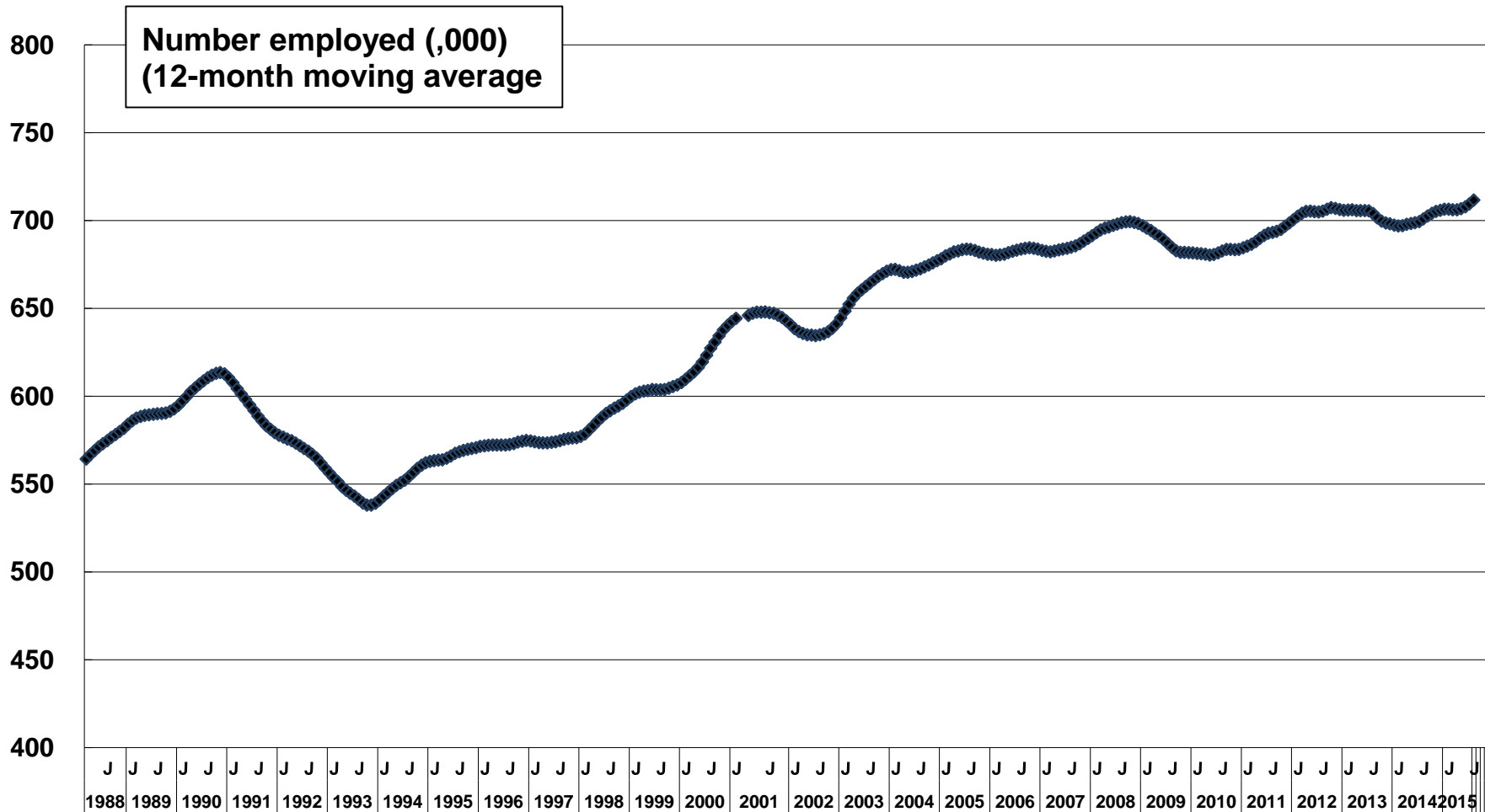
Source: Statistics Canada, Labour Force Survey, CANSIM Table 282-0124.

Kitchener-Waterloo-Barrie Economic Region, Ontario



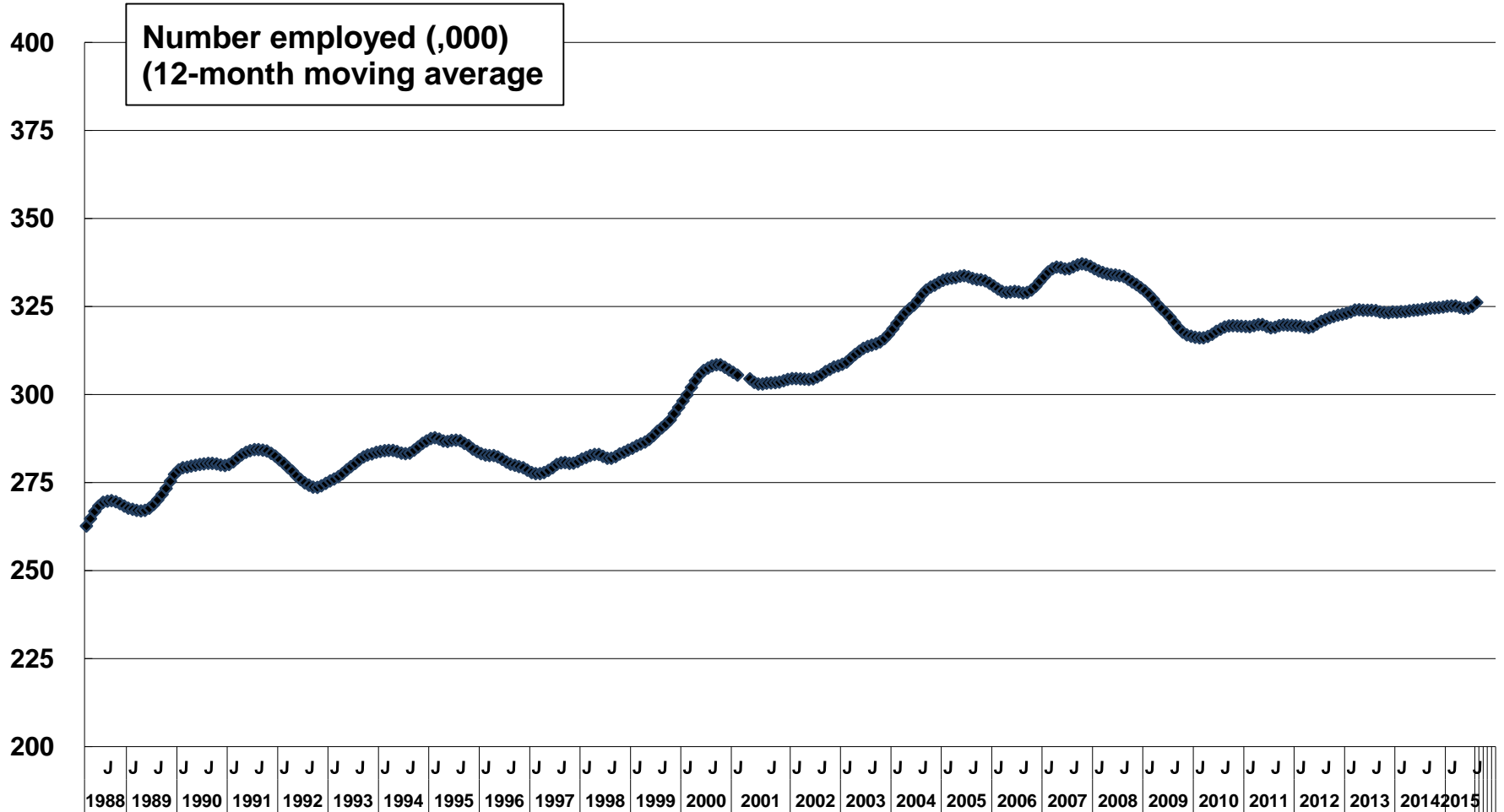
Source: Statistics Canada, Labour Force Survey, CANSIM Table 282-0124.

Hamilton-Niagara Peninsula Economic Region, Ontario



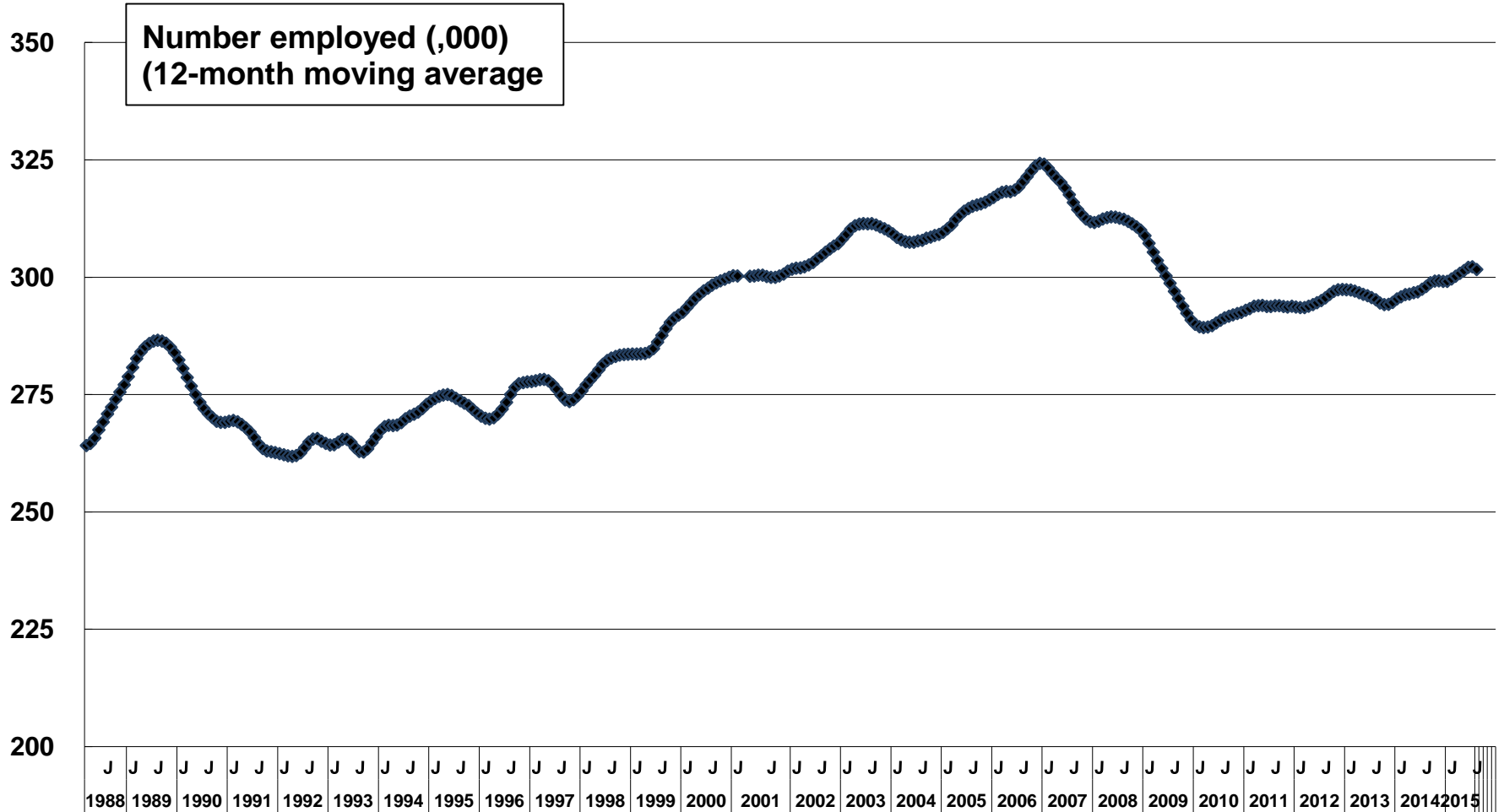
Source: Statistics Canada, Labour Force Survey, CANSIM Table 282-0124.

London (and area) Economic Region, Ontario



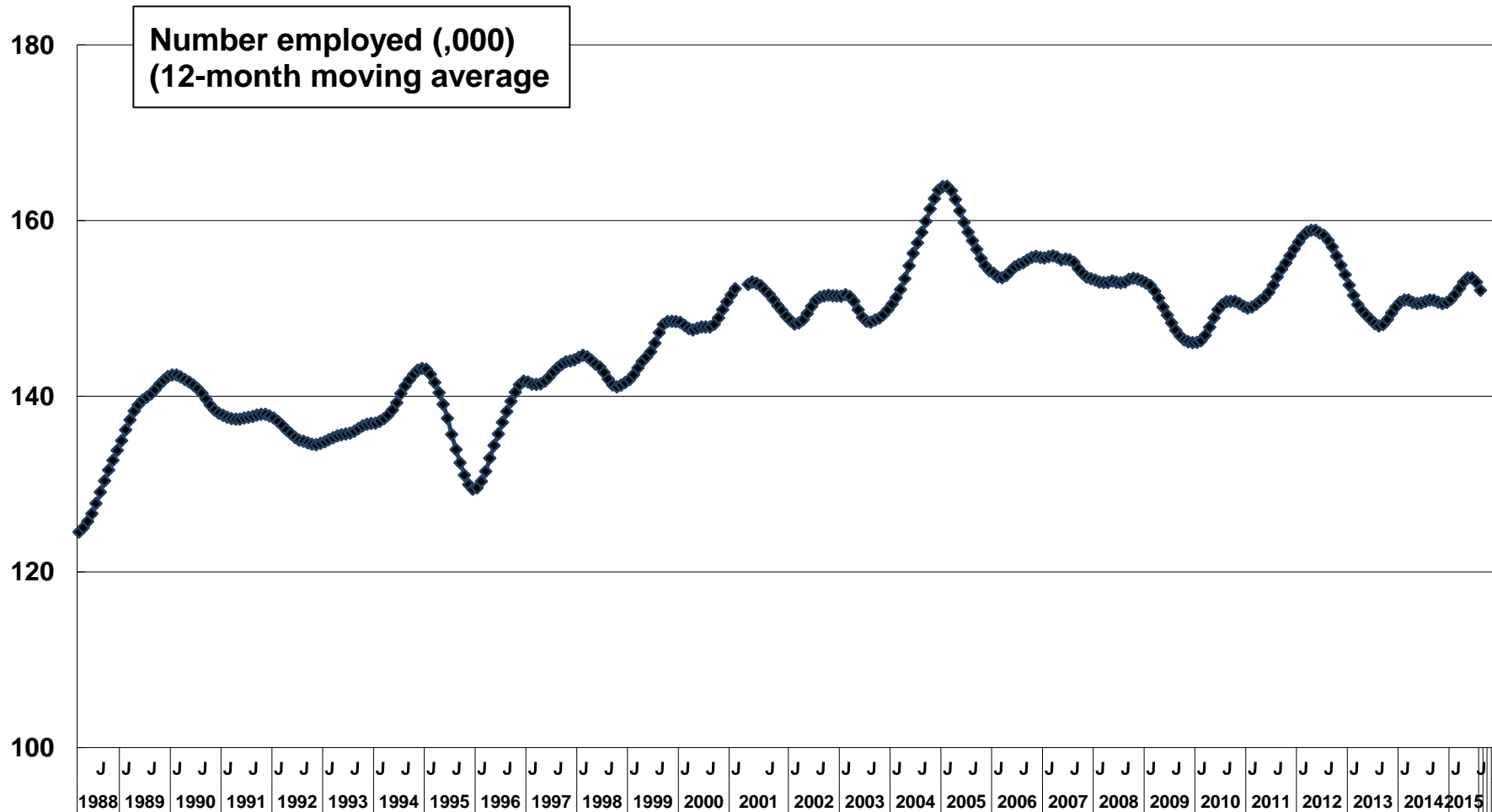
Source: Statistics Canada, Labour Force Survey, CANSIM Table 282-0124.

Windsor-Sarnia Economic Region, Ontario



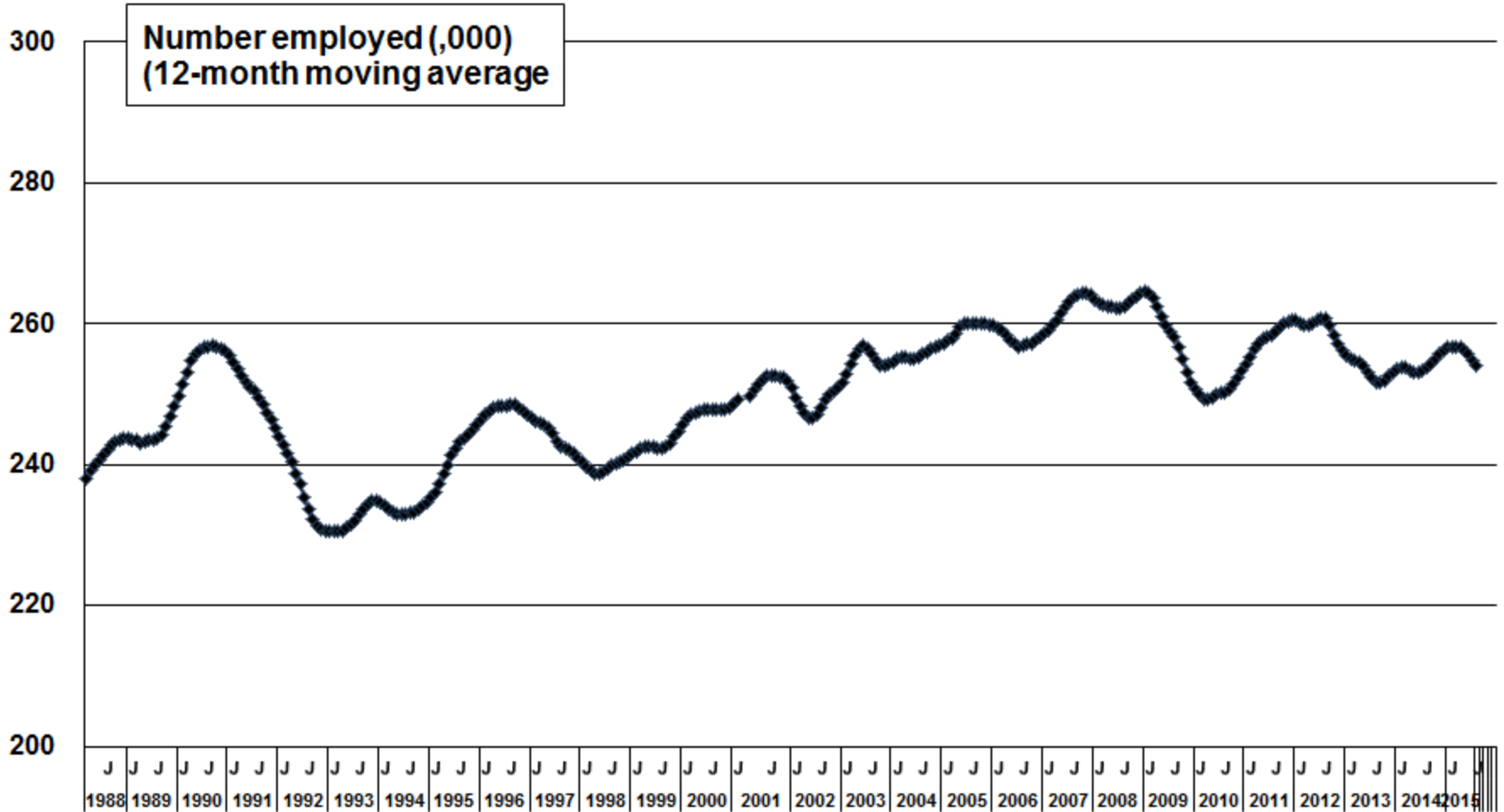
Source: Statistics Canada, Labour Force Survey, CANSIM Table 282-0124.

Stratford-Bruce Peninsula Economic Region, Ontario



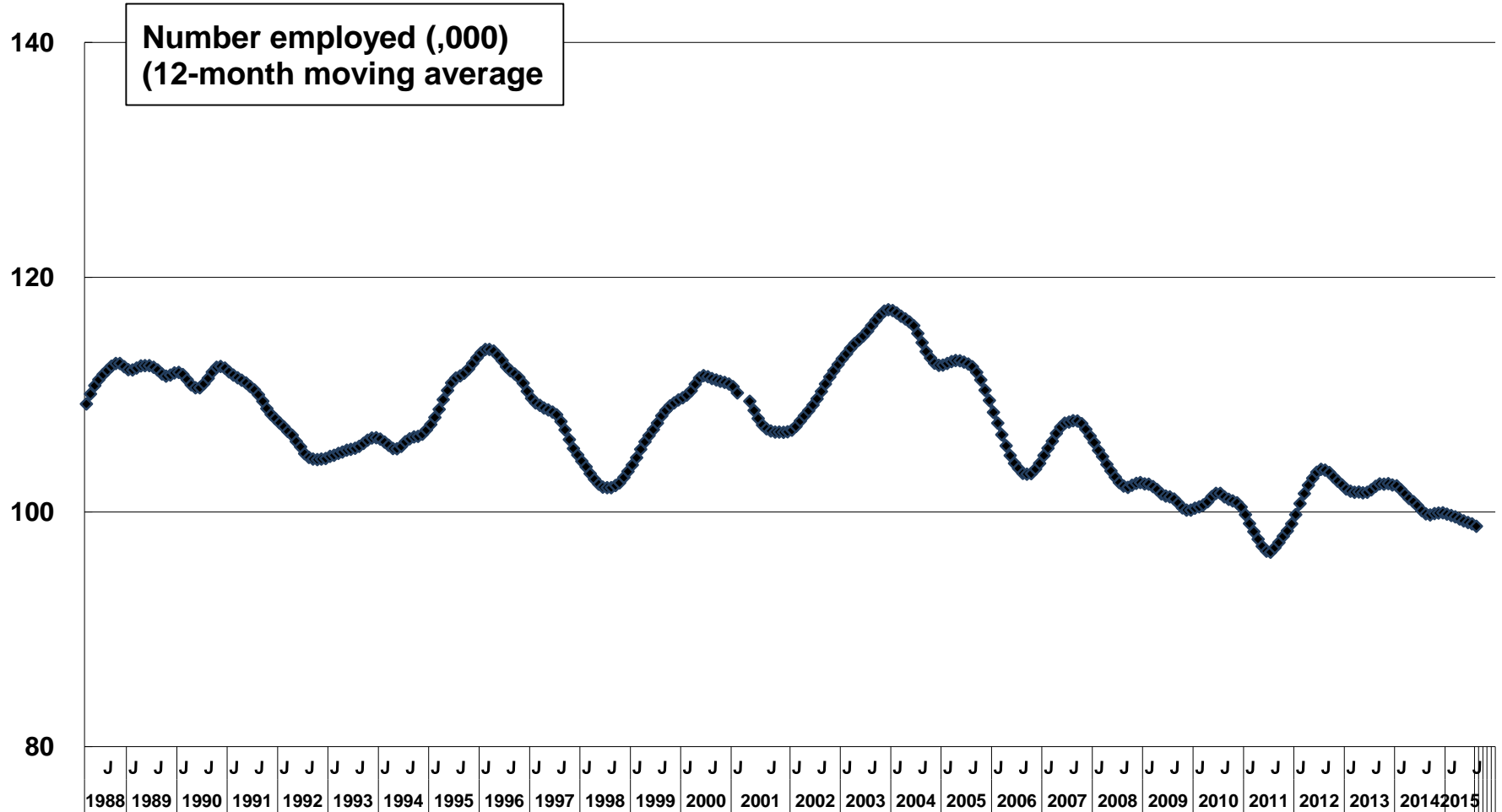
Source: Statistics Canada, Labour Force Survey, CANSIM Table 282-0124.

→ Northeast Economic Region, Ontario



Source: Statistics Canada, Labour Force Survey, CANSIM Table 282-0124.

Northwest Economic Region, Ontario

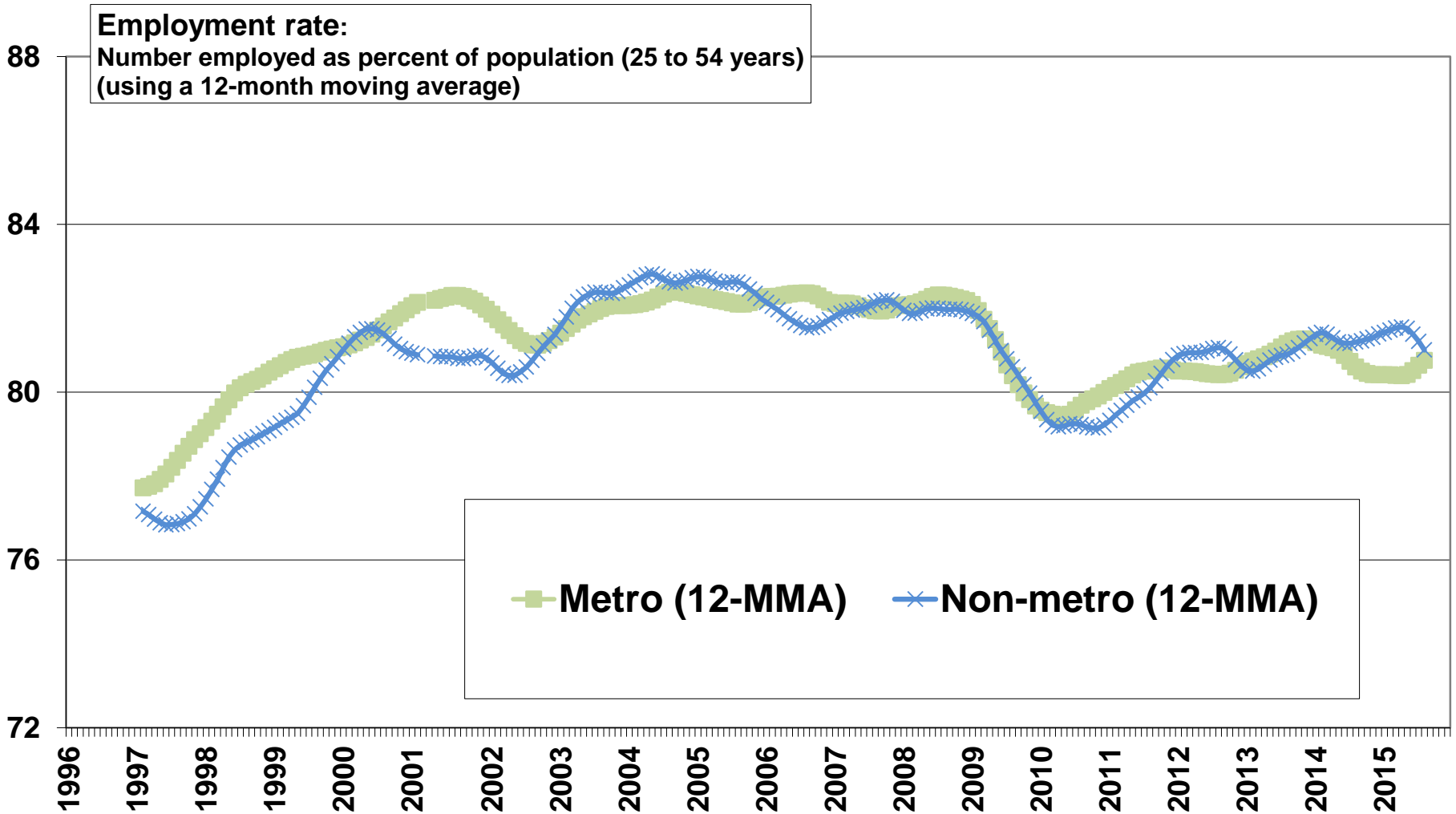


Source: Statistics Canada, Labour Force Survey, CANSIM Table 282-0124.

Level and trends in employment levels and employment rates: Ontario, to August, 2015

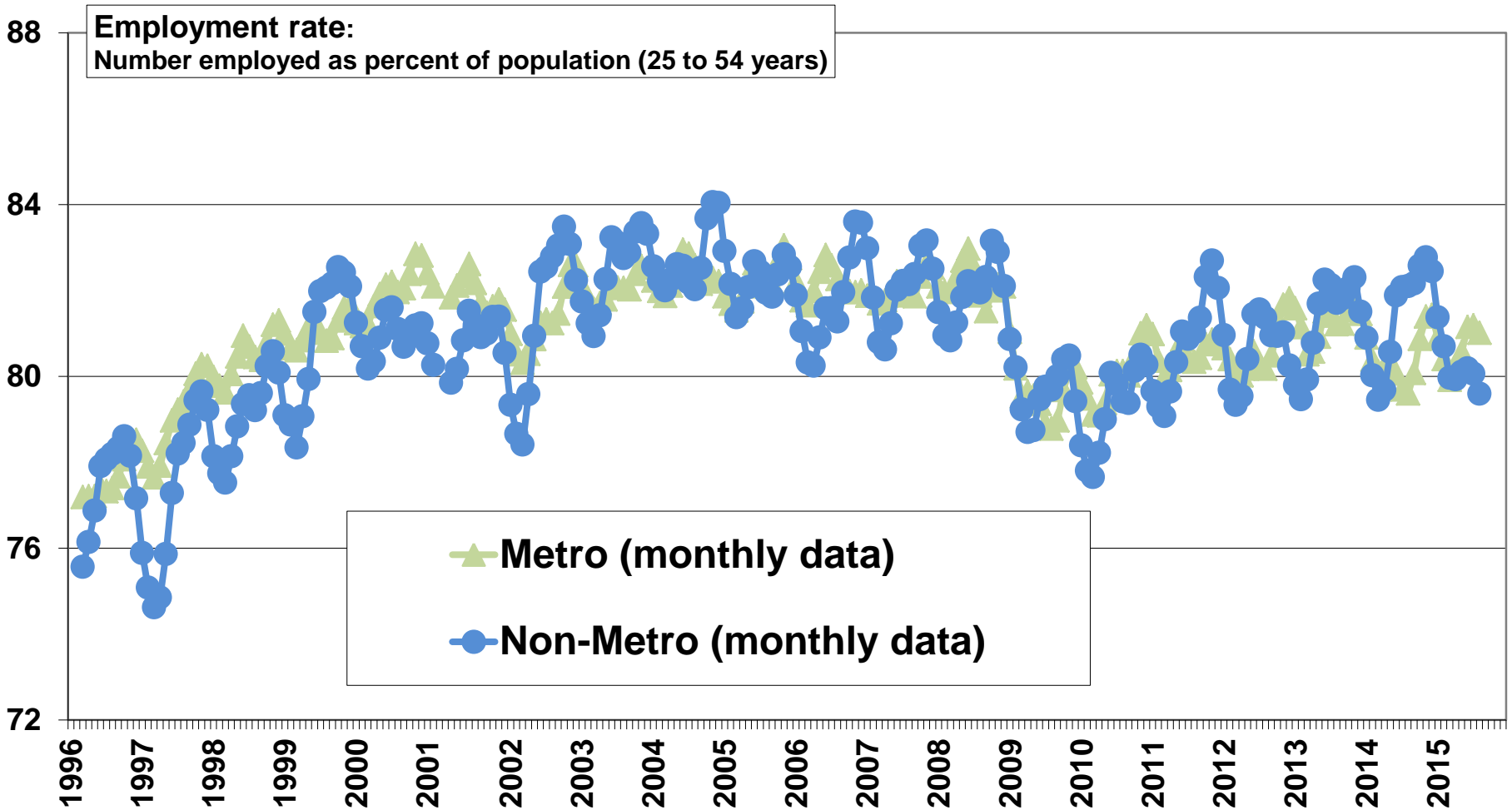
1. Employment levels
 - a. Non-metro (non-CMA) areas
 - b. Each economic region
- 2. Employment rates**
 - a. Non-metro (non-CMA) areas (25-54 years)**
 - b. Each economic region (15+ years)

Ontario employment rates: Non-metro has mirrored metro since 2002



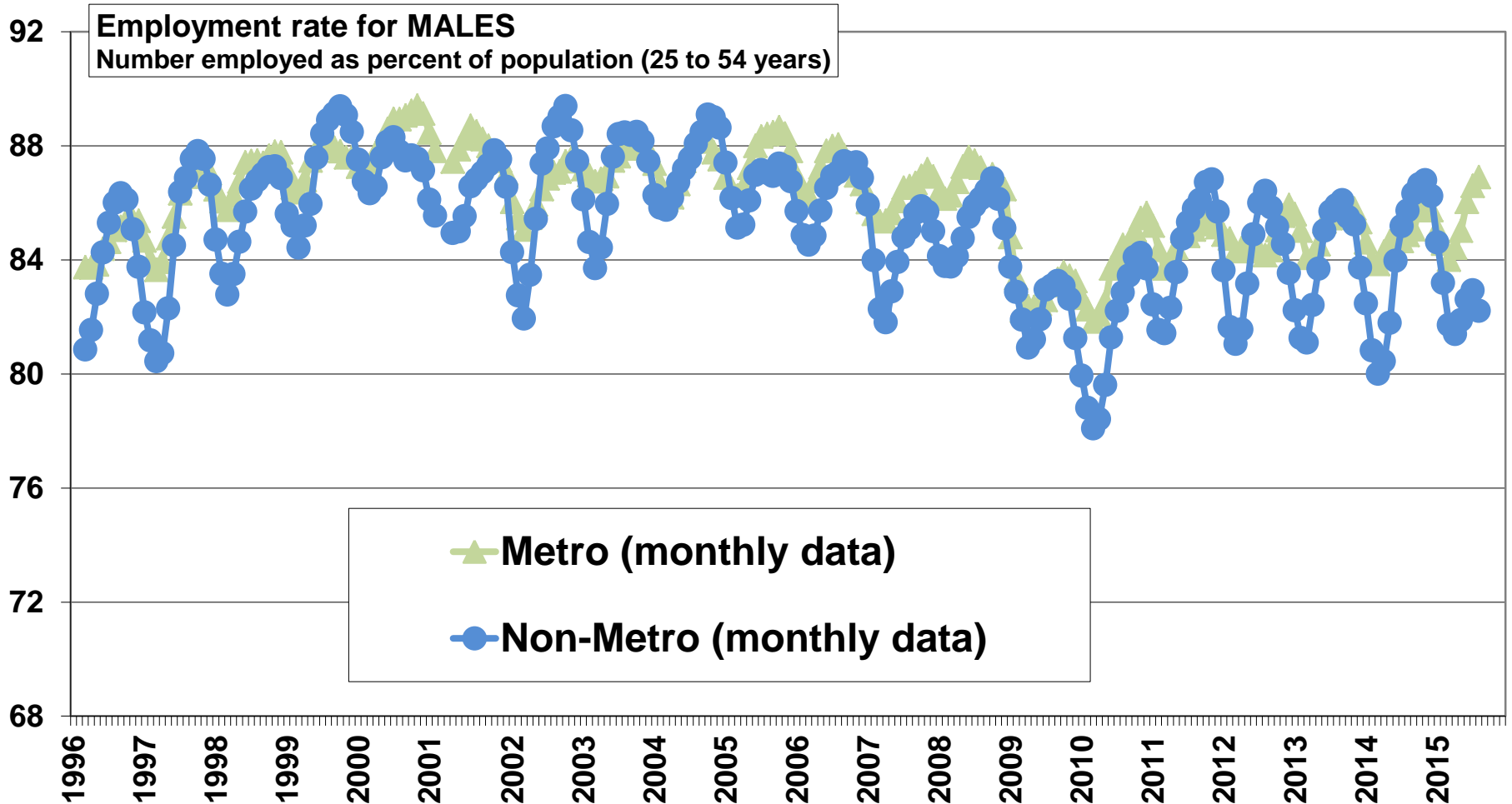
Source: Statistics Canada. Labour Force Survey, CANSIM Tables 026-0001 and 282-0109.

Ontario employment rates: Non-metro is higher than metro in the peak months and lower than metro in the winter months



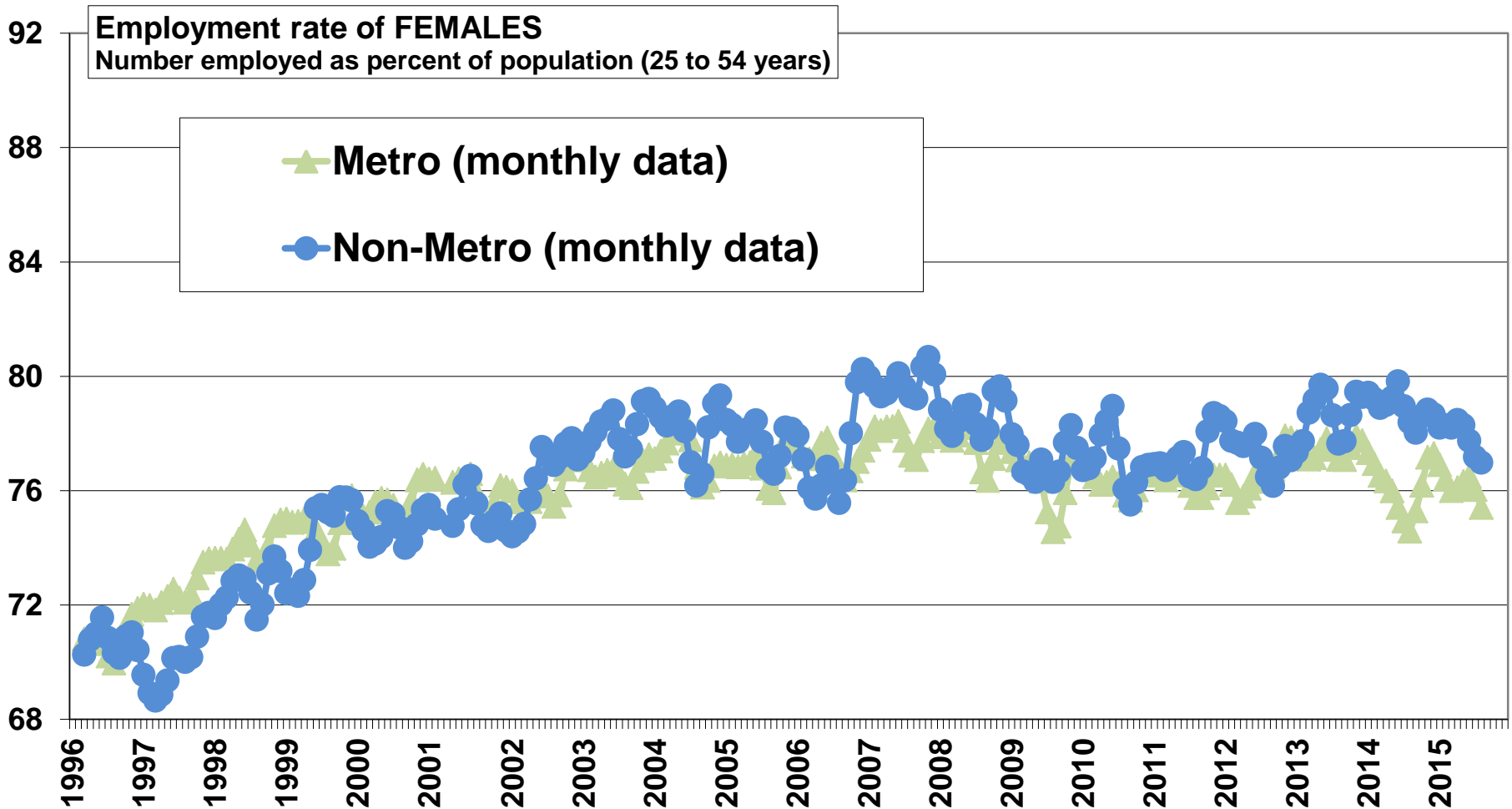
Source: Statistics Canada. Labour Force Survey, CANSIM Tables 026-0001 and 282-0109.

Ontario MALE employment rates: Non-metro is "often" higher than metro in the peak months and (always) lower than metro in the winter months



Source: Statistics Canada. Labour Force Survey, CANSIM Tables 026-0001 and 282-0109.

Ontario FEMALE employment rates: Non-metro is higher than metro in the peak months and the same as metro in the winter months

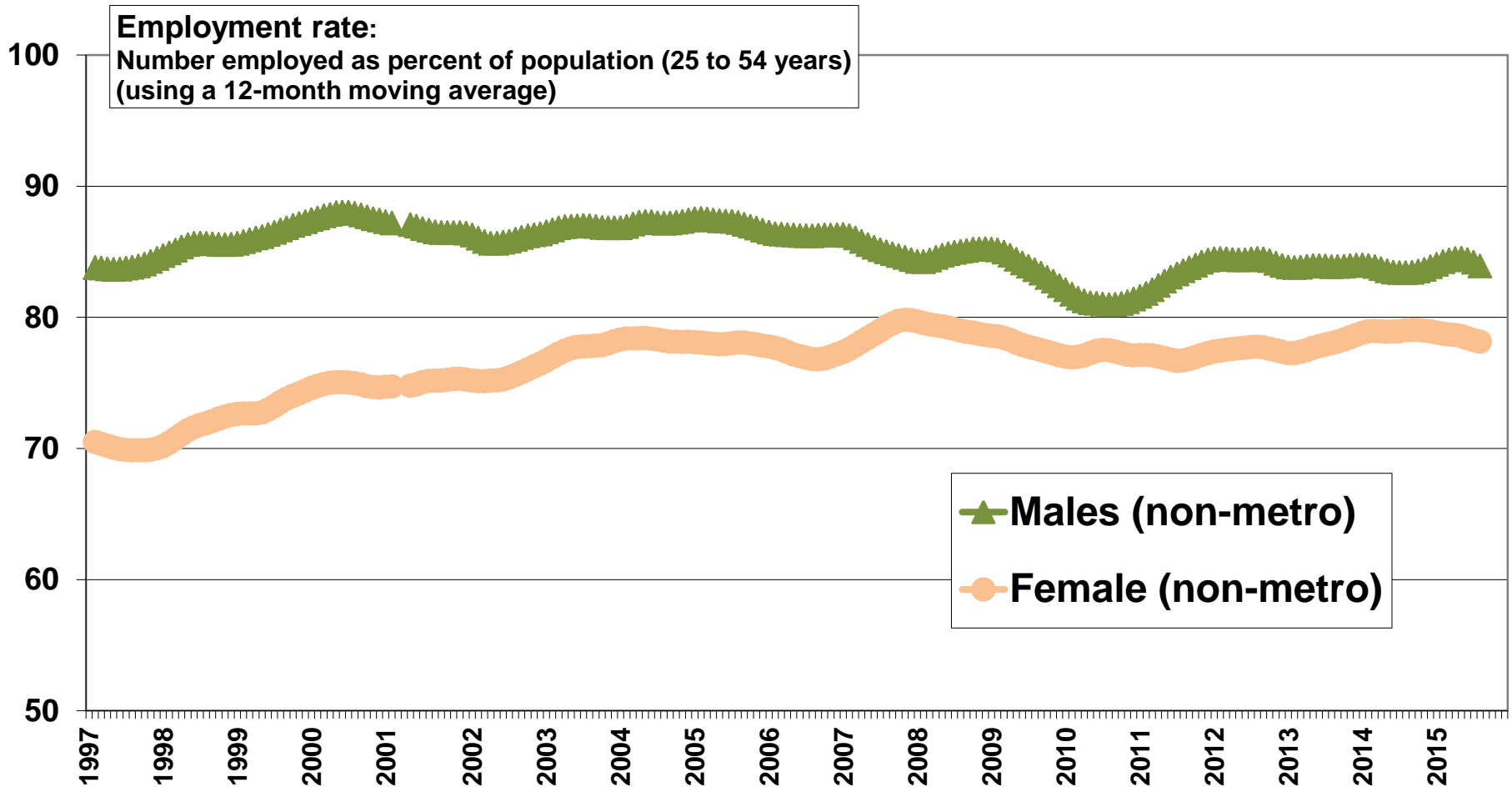


Source: Statistics Canada. Labour Force Survey, CANSIM Tables 282-0001 and 282-0109.

Ontario non-metro employment rates:

Males: Peaked at 88% in Jun/2000 & declined to 81% in Sept/2010

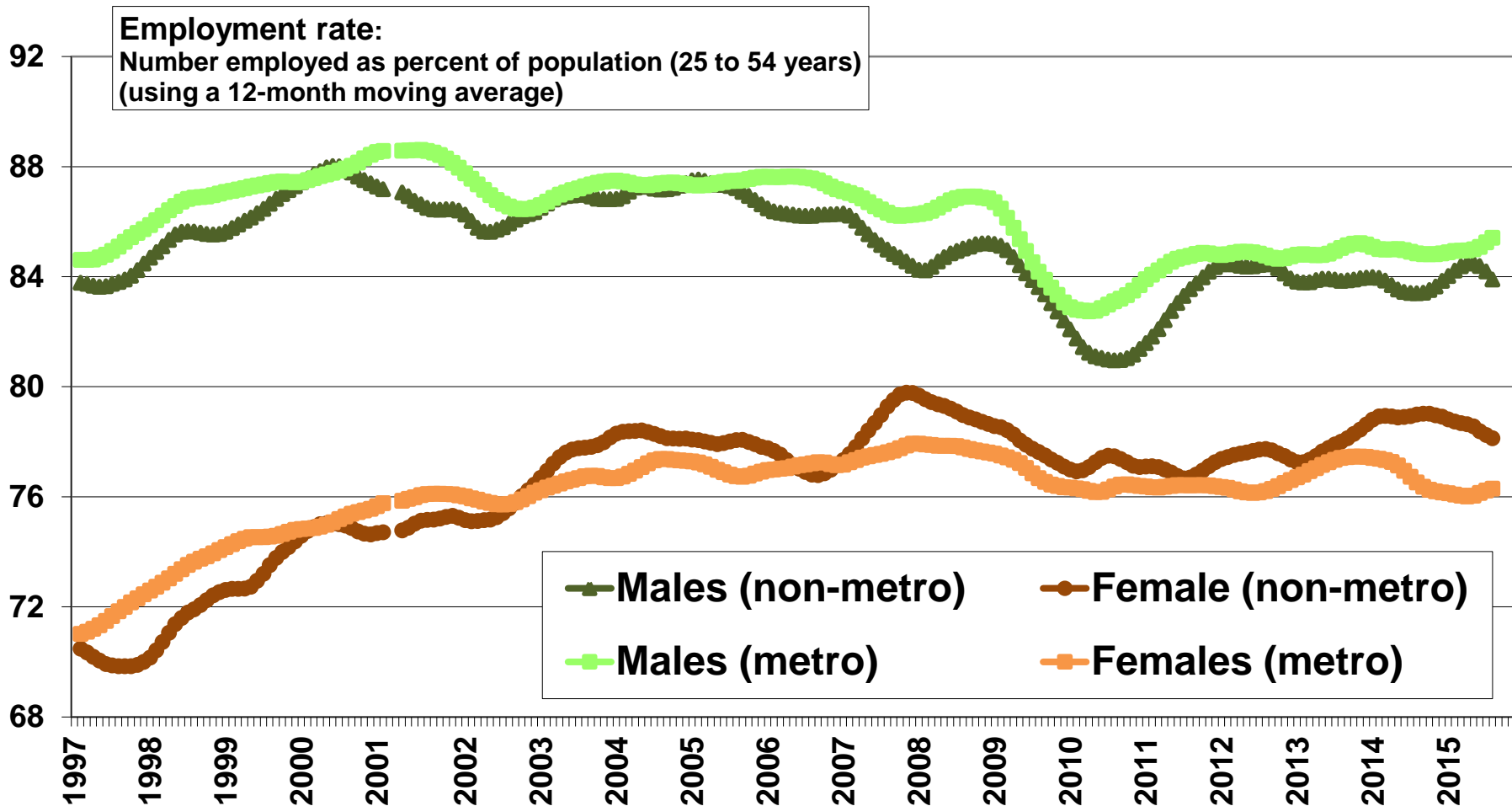
Female: Peaked at 80% in Nov/2007



Ontario employment rates:

Non-metro males (slightly) below metro male since April, 2005

Non-metro females (slightly) above metro females since Dec., 2006

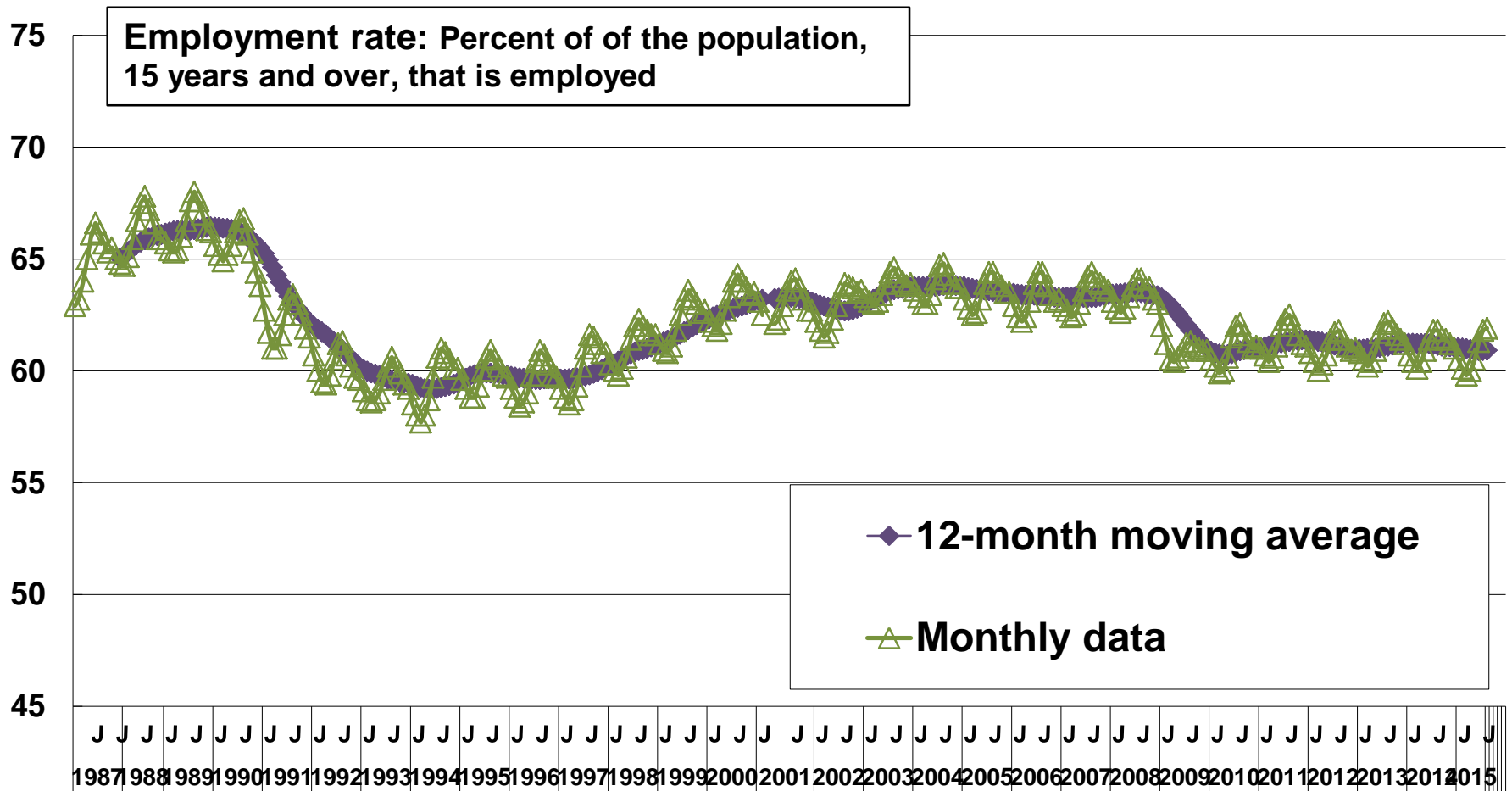


Source: Statistics Canada. Labour Force Survey, CANSIM Tables 282-0001 and 282-0109.

Level and trends in employment levels and employment rates: Ontario, to August, 2015

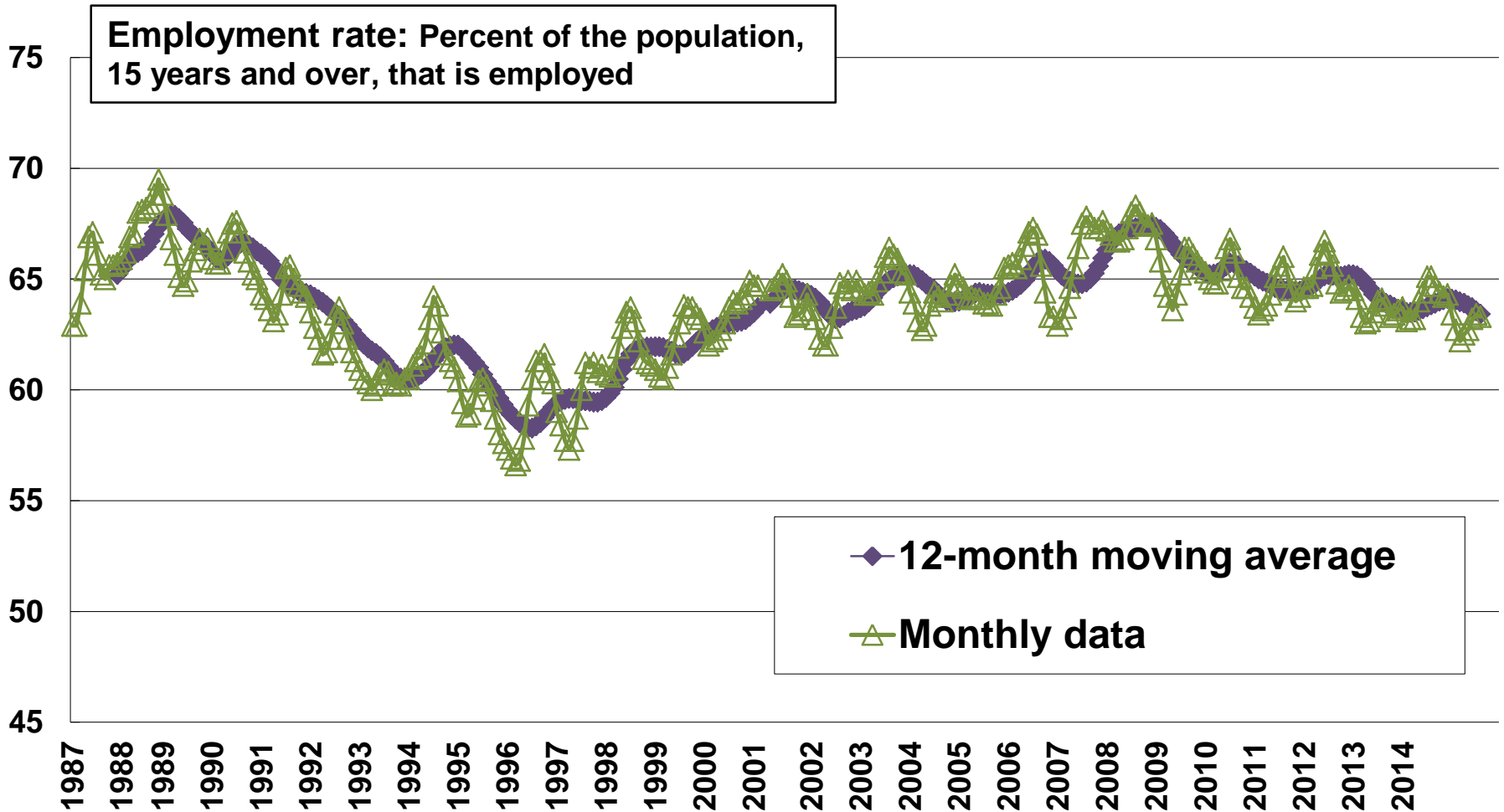
1. Employment levels
 - a. Non-metro (non-CMA) areas
 - b. Each economic region
- 2. Employment rates**
 - a. Non-metro (non-CMA) areas (25-54 years)
 - b. Each economic region (15+ years)**

Ontario's employment rate has not recovered from the downturn of 2009



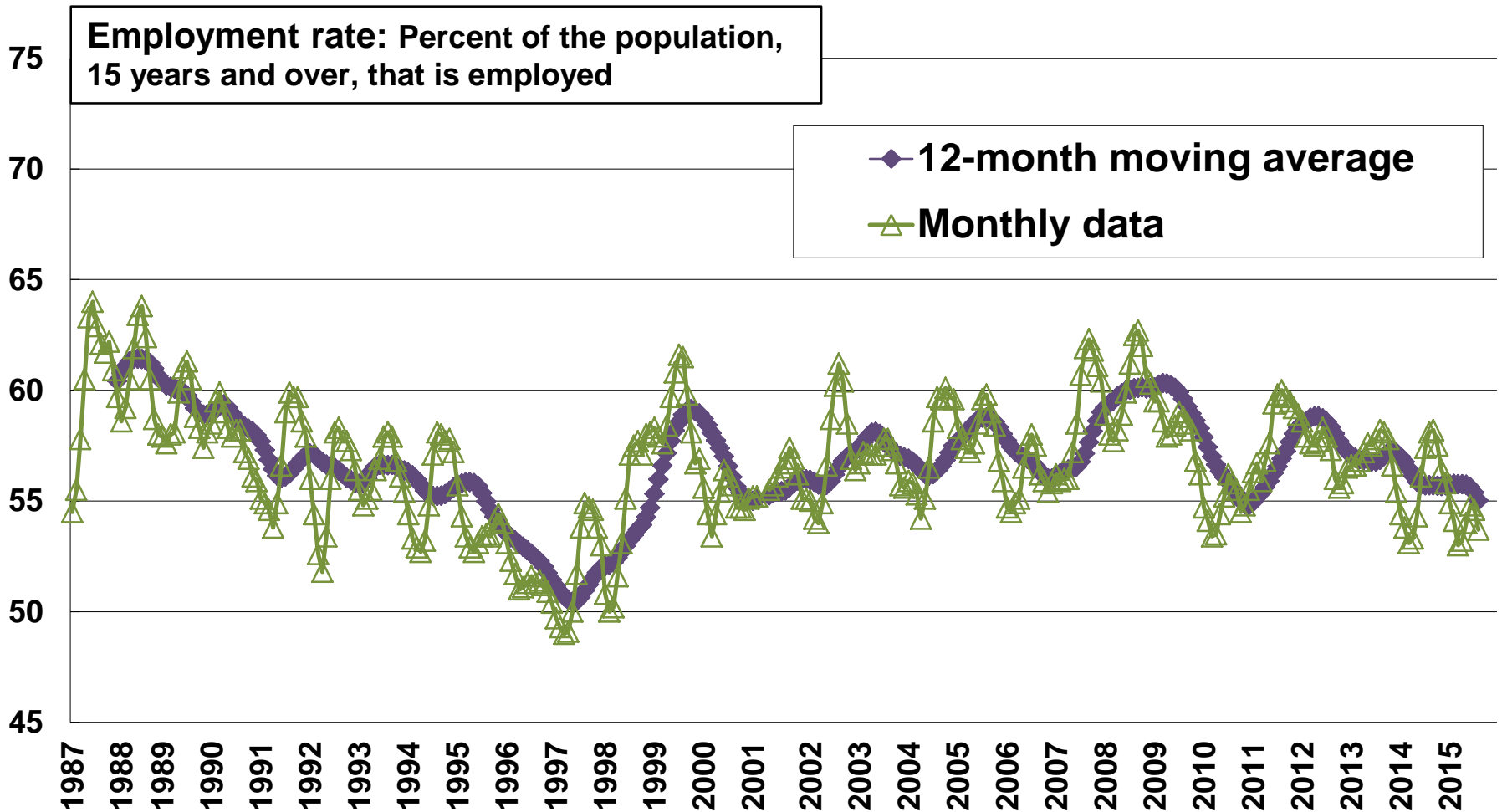
Source: Statistics Canada, Labour Force Survey, CANSIM Table 282-0054.

Employment rate: Ottawa (and area) Economic Region



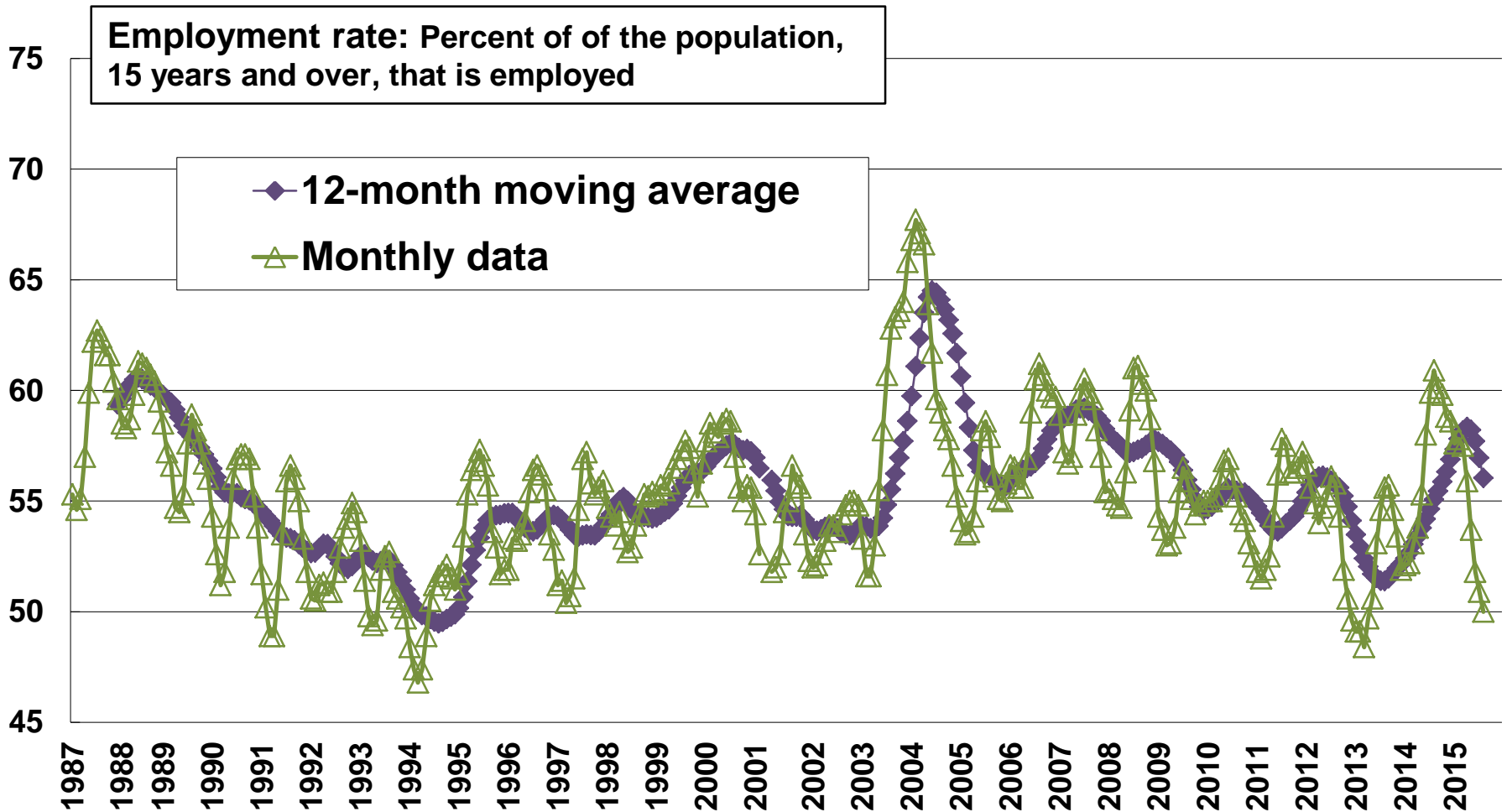
Source: Statistics Canada, Labour Force Survey, CANSIM Table 282-0054.

Employment rate: Kingston-Pembroke Economic Region



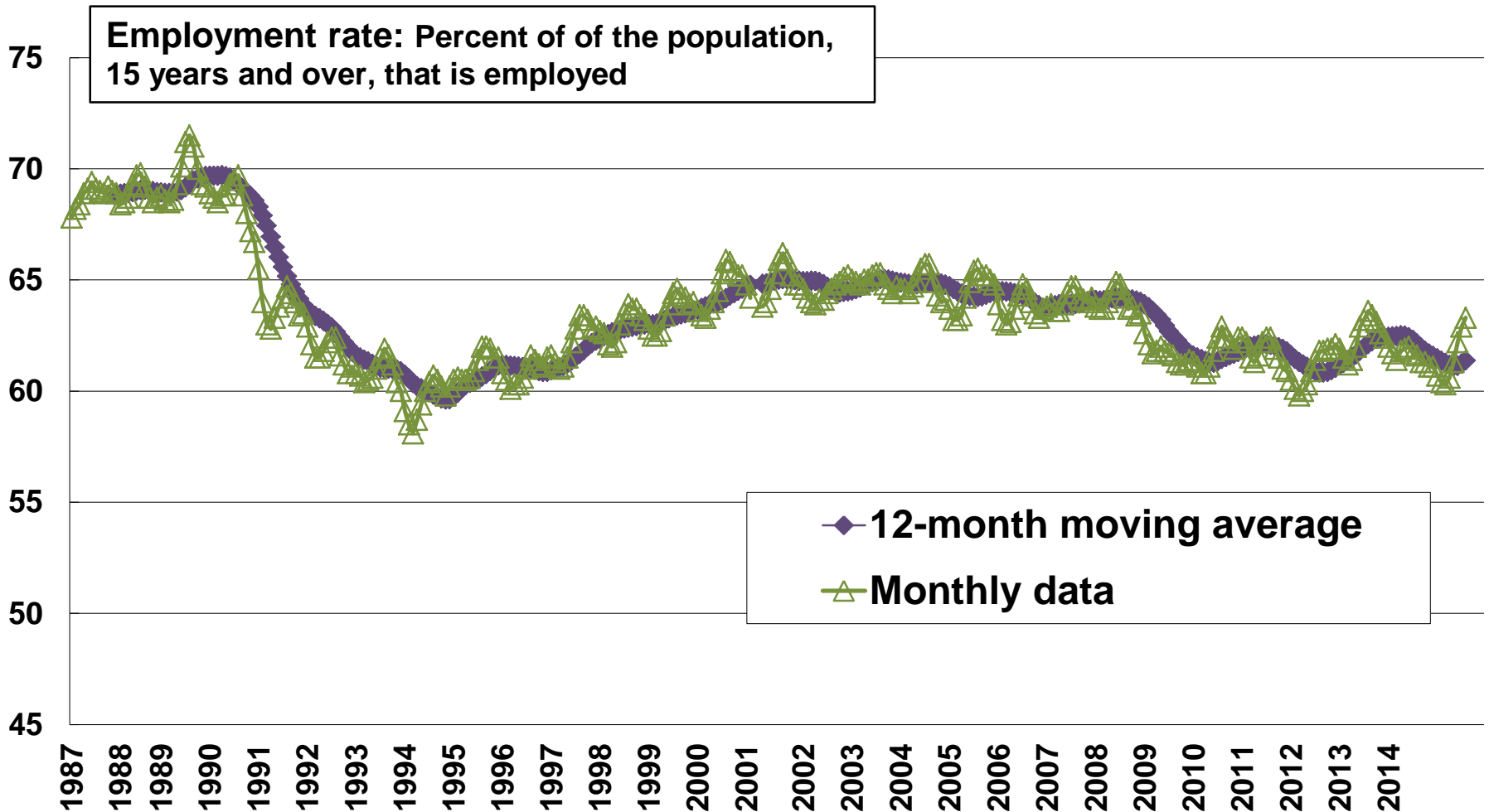
Source: Statistics Canada, Labour Force Survey, CANSIM Table 282-0054.

Employment rate: Muskoka - Kawarthas Economic Region



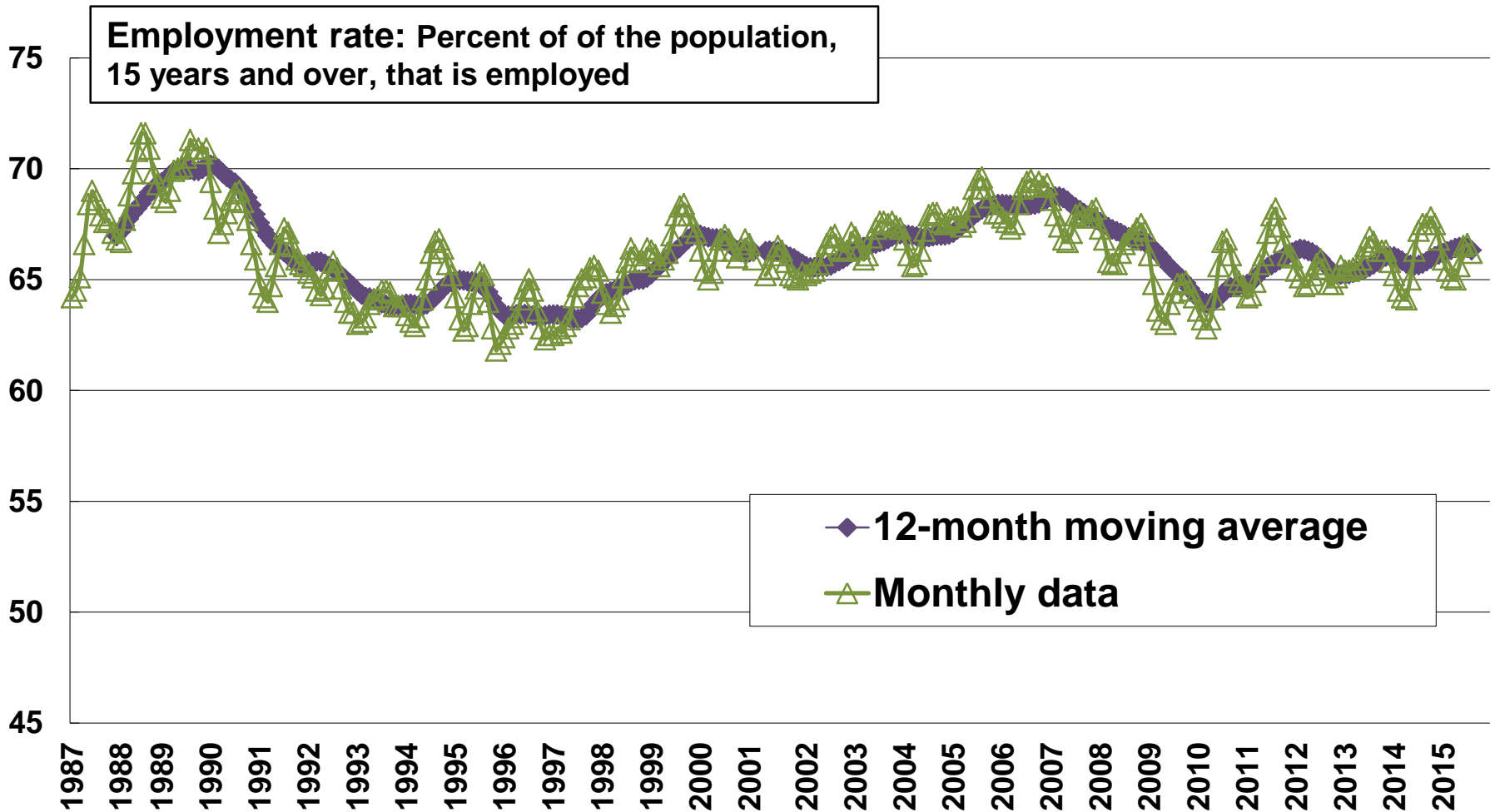
Source: Statistics Canada, Labour Force Survey, CANSIM Table 282-0054.

Employment rate: Toronto (and area) Economic Region



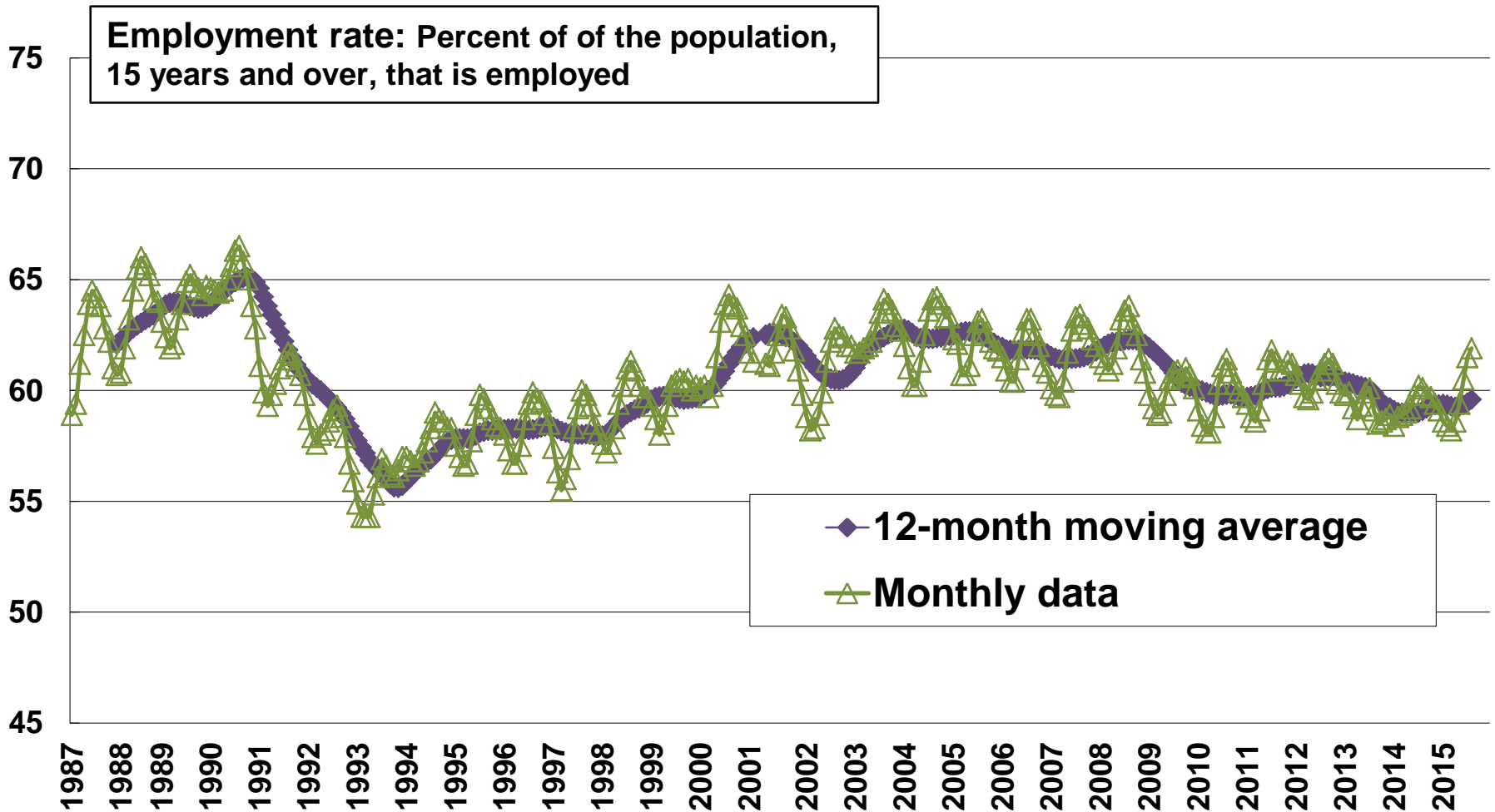
Source: Statistics Canada, Labour Force Survey, CANSIM Table 282-0054.

Employment rate: Kitchener - Waterloo - Barrie Economic Region



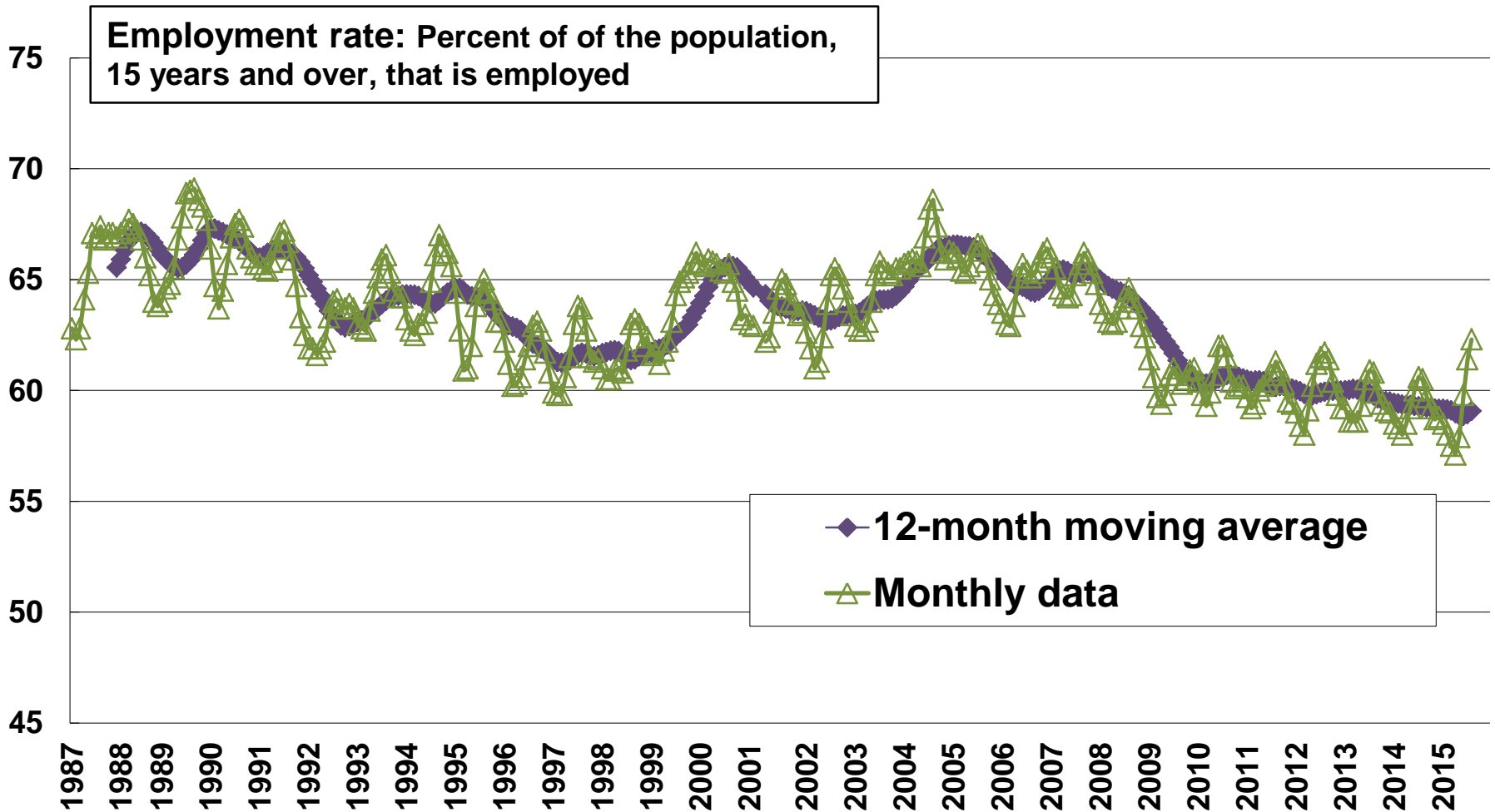
Source: Statistics Canada, Labour Force Survey, CANSIM Table 282-0054.

Employment rate: Hamilton - Niagara Peninsula Economic Region



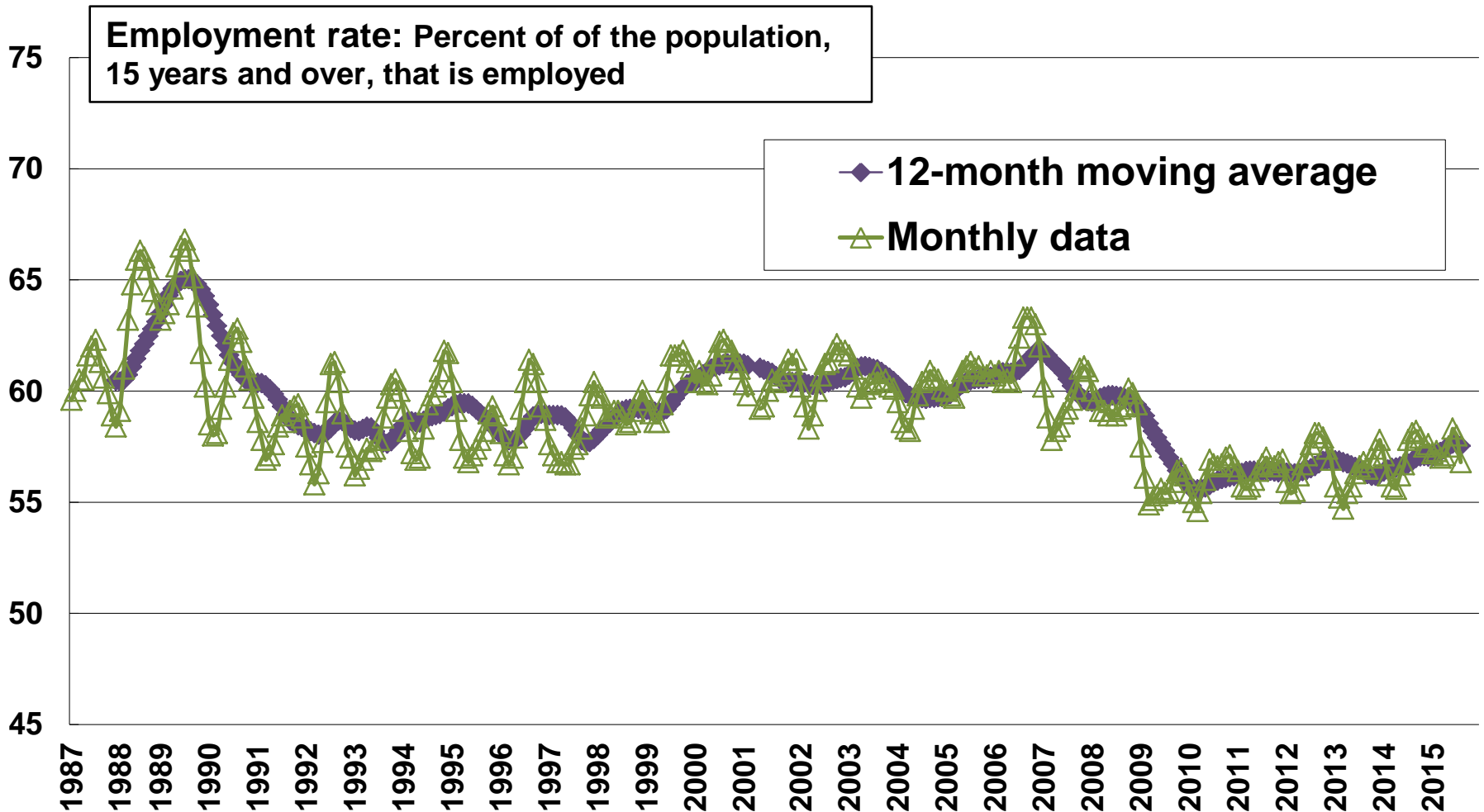
Source: Statistics Canada, Labour Force Survey, CANSIM Table 282-0054.

Employment rate: London (and area) Economic Region



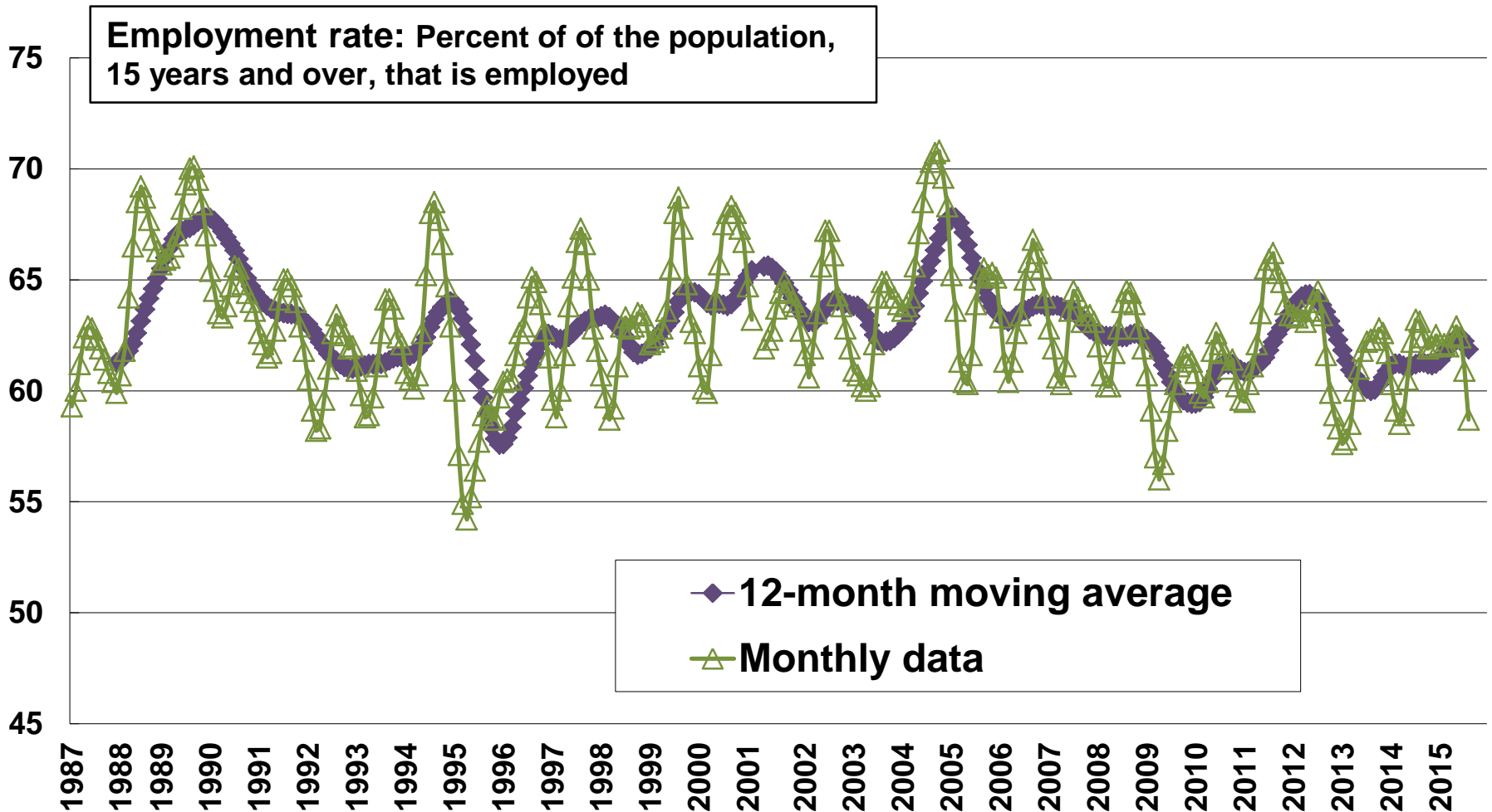
Source: Statistics Canada, Labour Force Survey, CANSIM Table 282-0054.

Employment rate: Windsor - Sarnia Economic Region



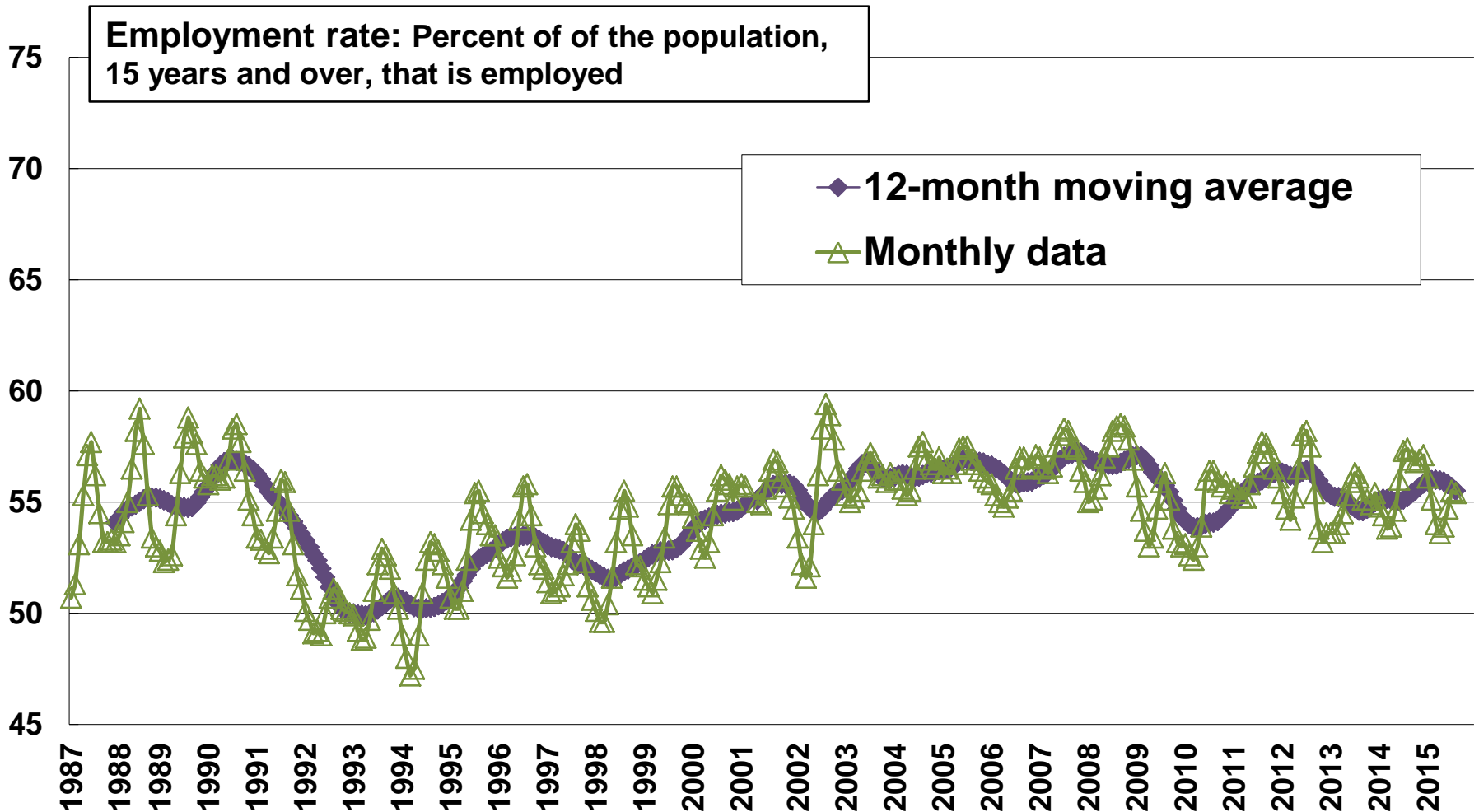
Source: Statistics Canada, Labour Force Survey, CANSIM Table 282-0054.

Employment rate: Stratford - Bruce Peninsula Economic Region



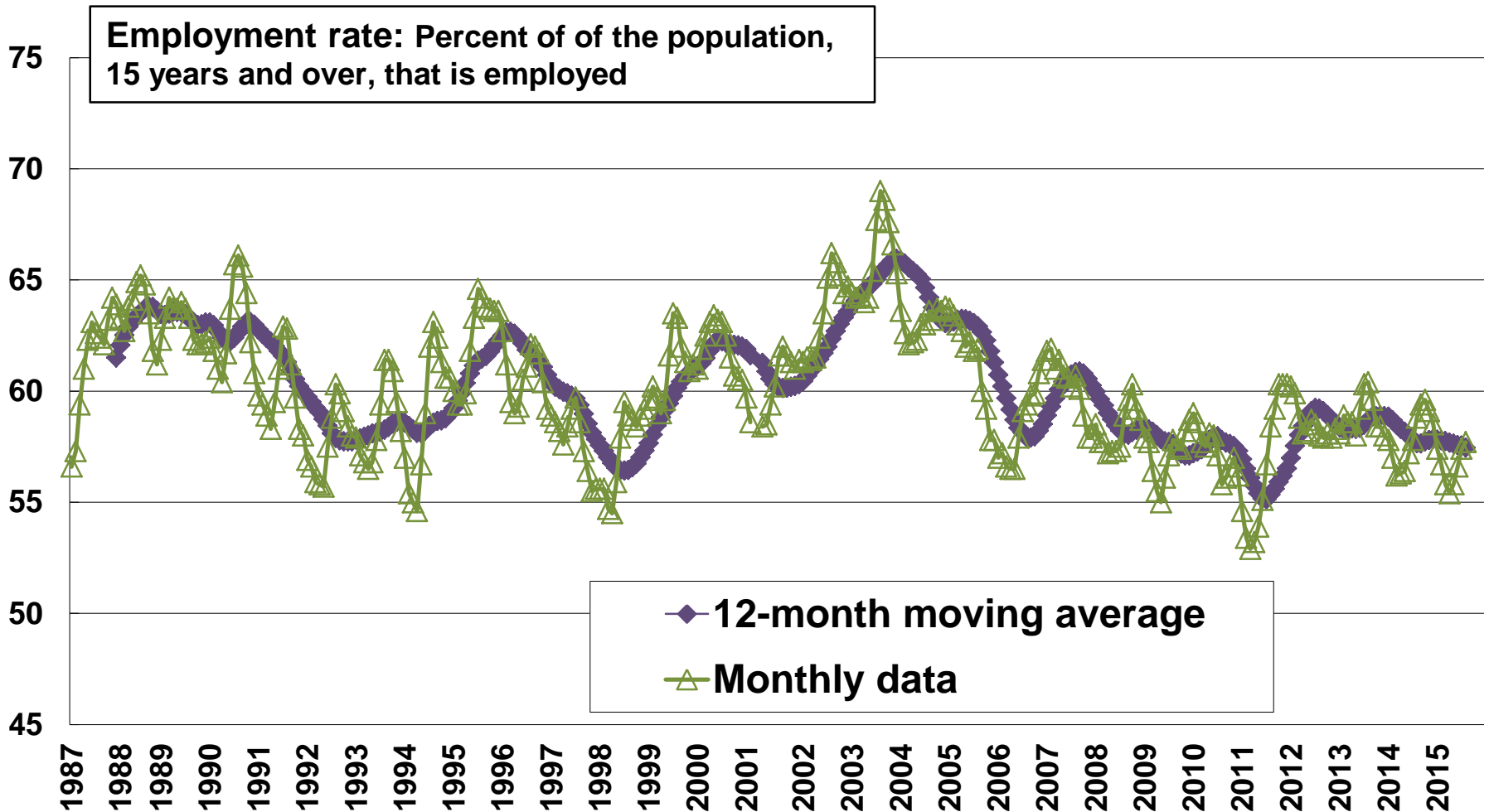
Source: Statistics Canada, Labour Force Survey, CANSIM Table 282-0054.

Employment rate: Northeast Ontario Economic Region



Source: Statistics Canada, Labour Force Survey, CANSIM Table 282-0054.

Employment rate: Northwest Ontario Economic Region



Source: Statistics Canada, Labour Force Survey, CANSIM Table 282-0054.